

53.95 + COMPLIMENTARY
2025/2026

Oh, Ranger!®

YOUR COMPLETE GUIDE TO THE PARKS

↓
PARKS
MUSEUMS
TRAILS
NIGHT SKIES
REGIONAL MAPS
CAMPING
AND MORE!

ARIZONA STATE PARKS & TRAILS



OFFICIAL
PARTNERS



National Forest
Foundation



© JIANG BERKELFELD



Z 50II

Meet your new trail buddy.

Explore the beauty of nature with the Nikon Z50II—a compact, lightweight mirrorless camera that's ready for adventure. Enjoy super-smart autofocus, inspiring color effects and easy sharing straight from the camera.



SHOP
Z50II



MONARCH M5

Discover unseen details.

Get closer to nature with a pair of high-quality Nikon binoculars. From majestic bears and buffalo to birds and butterflies, Monarch M5 binoculars will give you a sharp, colorful, immersive view. And thanks to their tough, waterproof construction, you don't need to be afraid of a little weather.



SHOP
MONARCH M5



Welcome



Arizona's natural spaces are unlike any others. That's why it is my greatest pleasure to welcome you to our amazing state parks.

Our beautiful parks showcase Arizona through breathtaking

vistas, rugged trails, sparkling lakes and rivers, diverse wildlife, museums, and artifacts. Whether you are visiting or exploring your home state, you are welcome in our parks.

Parks strengthen our communities, benefit our mental and physical health, and teach us about stewardship of our natural and cultural resources. Plus, our state parks contribute to the local economy by creating jobs, attracting tourism, and supporting rural areas.

Spend some time exploring and visiting the more than 30 parks, learn about Arizona's history, and maybe discover something new, too. Whether you camp, hike, or just gaze up at the night sky, you'll appreciate the time and the memories.

Katie Hobbs
Governor of the State of Arizona

Outdoor recreation is booming, and in Arizona, there's always a great time of year to get outside and explore. At the more than 30 parks in our state, you can camp, fish, hike, swim, kayak, visit an underground cave, check out living history programs, learn about mining or logging, take a walk in the footsteps of the past, and check out amazing wildlife.

Whether you want to spend your summers on the lakes or up in the cool pines, your winters in the Sonoran Desert or exploring the red rocks of Sedona, parks are always in season. And they are open and available year-round, thanks to the support of our visitors! Our rangers are there to ensure you are safe and informed, and they share their knowledge through programs and activities.

Arizona State Parks and Trails doesn't just conserve and protect our natural areas and historic properties. We also make sure the parks will be around for future generations. We want to help you build a lifetime of memories and connect to everything that Arizona's outdoors has to offer.

Welcome to our parks! We know you'll have an amazing time.

Bob Broscheid
Executive Director,
Arizona State Parks & Trails



Contents



American Park Network® publishes Oh, Ranger! ParkFinder™, OhRanger.com, and Oh, Ranger!® guides—a collection of visitor guides for public lands all across America—and operates Oh, Ranger! Wi-Fi in parks and public lands. American Park Network is an official partner of the National Forest Foundation, National Parks Conservation Association, National Fish and Wildlife Foundation, American Hiking Society and the Student Conservation Association.

PRINCIPALS

Mark J. Saferstein - Founder & Editor-in-Chief
Joel S. Saferstein
Alex Frenkel

TECHNOLOGY

Scott Falconer, Erik Guthrie

EDITORIAL / PRODUCTION

Editorial team

Amanda Bly
Emelyn Ehrlich
Sophia Macomber
Wendy Willis

Production Manager

Dennisse Cruz

Design Team

Mario Arce
Michael Cohen
Tatiana Hurtado
Walter Jeronimo
Aziz Zizoue

ADVERTISING SALES & MARKETING

(212) 581-3380

adsales@americanparknetwork.com
Business Development: Randy Burton,
Patrick Keane, Kristi Rummel

American Park Network
41 East 11th Street, 11th Floor
New York, NY 10003



FOR MORE INFORMATION

Distribution requests
distribution@americanparknetwork.com

Oh, Ranger! Wi-Fi™ installation/sponsorship
wifi@americanparknetwork.com

© 2025 APN Media, LLC. All rights reserved.

ARIZONA STATE PARKS & TRAILS

WELCOME	2
PLAN YOUR VISIT	4
IMPORTANT CONTACTS	8
PRESERVATION	10
HISTORY & CULTURE	14
THINGS TO DO	16
OFF-HIGHWAY VEHICLES	17
WATCHABLE WILDLIFE	22
BIRDWATCHING	23
CAMPING	24
WATER & HERITAGE CORRIDOR	28
CENTERFOLD MAP	
SEDONA/VERDE LOOP	36
COPPER CORRIDOR	44
CULTURAL CORRIDOR	50
HIGH COUNTRY LOOP	56
JUST FOR KIDS	62
GEAR UP AND GET OUT	63
ROADTRIP IDEAS	64

Sincere thanks to everyone at Arizona State Parks & Trails for their collaboration. Special appreciation to Game & Fish and the Arizona Office of Tourism.

Cover: Cattail Cove State Park in Lake Havasu City.

All photos are courtesy of Arizona State Parks & Trails unless otherwise indicated.

Plan Your Visit



The beauty of Arizona is unparalleled in its diversity of landscapes. There's so much to see and do in the state. Whether you have a day or several weeks, Arizona's state parks will bring you intimately close to the state's natural and cultural wonders. Arizona's state parks offer a chance to see and explore the state's incredibly diverse natural attractions and cultural exhibits. Reserve a cabin, campsite, or cave tour today at AZStateParks.com!

TRAVEL DISTANCES

Many state parks are within driving distance of Arizona's major cities, and make perfect day trip destinations. In fact, there are several state parks located within two hours of Phoenix, Flagstaff, and Tucson. See the centerfold map for a mileage chart.

OPERATING HOURS AND SEASONS

Arizona state parks are open year-round. For specific park schedules, please visit AZStateParks.com. For information and campground and cave tour reservations, call (877) MY-PARKS.

ARIZONA STATE PARKS AND TRAILS CENTRAL OFFICE

Get travel and parks information in the downtown Phoenix area at 1110 W. Washington Street, Suite 100, Phoenix, AZ 85007.

ENTRANCE FEES

Day use fees at the state parks range from \$5 to \$30. Prices may vary by season.

PARK PASSES

Arizona State Parks and Trails offers an annual pass for frequent park visitors. The annual day use pass allows access for the pass holder and three additional people in the same vehicle. Fees for the pass go directly back into supporting and operating the parks.

Annual park passes are available at most state parks, except Colorado River, McFarland, Tubac Presidio, and Yuma Territorial Prison state historic parks, online at AZStateParks.com, and over the phone at (877) MY-PARKS. Passes are good for one year from date of purchase and cannot be applied to other park fees, like camping or guided tours.

The **Military Discount Program** provides a 50 percent day-use discount to: all active military, Guard, Reserve and Arizona residents who are United States Military Retired or Service Disabled Veterans. Please provide military ID at the gate.

A **free day-use pass** is available to all Arizona-resident 100 percent service disabled veterans (with VA-certification of 100 percent Service Connected Disability). All passes cover up to three accompanying adult family members at Arizona State Parks and Trails. Contact a park directly to receive your pass. Proof of eligibility required.

COMMERCIAL GROUPS

Commercial groups may visit the parks. For Kartchner Caverns commercial tours, call (520) 586-4100.

GROUP-USE AREAS

More than 20 Arizona state parks have group-use areas, including picnic areas and shade ramadas. See the facilities charts in the regional chapters of this guide or call the park directly for more information.

NURTURE NATURE.



When you follow the principles you help protect and preserve Arizona's natural landscapes for this and future generations.

Learn more at AppreciateAZ.com

APPRECIATE **AZ**

ARIZONA



Featured Coalition Partner:





ONLINE RESOURCES

Visit **AZStateParks.com** for upcoming events, park information, and other resources to help plan your trip. The website also provides interactive driving directions, downloadable park maps, park hours and guidelines, and categories of campsites and park histories. Find specific information on recreation parks, historic parks, or parks with particular facilities or activities on the 'Find a Park' tabs. Visitors to **AZStateParks.com** can also make campground and cabin reservations, schedule tours at Kartchner Caverns State Park and Riordan Mansion State Historic Park, find information on Arizona's Off-Highway Vehicle Program (OHV), State Trails Program, the State Historic Preservation Office (SHPO), and grant funding options.

FRIENDS GROUPS

Arizona State Parks and Trails is supported by several dedicated non-profit organizations called Friends Groups that help sustain a variety of projects and increase awareness of the system's recreational, natural, and historic resources. They contribute to building new trails, provide funding for new signs, support volunteers, provide equipment, and much more. Friends groups are associated

with the following: Kartchner Caverns, Catalina, Oracle, Red Rock, Riordan Mansion, Slide Rock, Tonto Natural Bridge, Tubac Presidio, Sonoita Creek, Verde River Greenway, and Yuma Territorial Prison.

PETS

Who makes a better hiking buddy than a four-legged friend? Dogs can be amazing adventurers, and Arizona State Parks and Trails welcomes pets at most parks! However, animals must be kept on a leash that does not exceed six feet at all times. Owners must also clean up after their pets. With the exception of service animals, pets are not allowed in historic buildings or museums, in cabana sites, on developed beaches, or at other environmentally or ecologically sensitive areas. Contact individual parks for information about site-specific rules. While enjoying the outdoors with your canine companions, remember that they depend completely on you for comfort and safety!

→ Sign up for the State Parks and Trails Newsletter and be the first to know!



PARK SAFETY AND REGULATIONS

Please review and observe the following tips, which are designed to enhance your safety and enjoyment before you head out:

- Always stay on trails. Share the trail and be aware when you are on the trail. Always let someone know your hiking itinerary and when you plan to return before you start your trip.
- Camp only in designated areas.
- Practice Leave No Trace (**LNT.org**) principles:
 - Plan ahead and prepare.
 - Travel and camp on durable surfaces.
 - Dispose of waste properly.
 - Leave what you find.
 - Minimize campfire impacts.
 - Respect wildlife.
 - Be considerate of other visitors.
- No animals (except service dogs) are allowed in historic buildings.
- Never feed wildlife and always store your rations and trash securely.
- When boating, always wear a personal flotation device and make sure that you have enough for everyone on your craft.

**Find Your Adventure.
JOIN THE CREW!**

Scan Me!

SCA student conservation association



IMPORTANT CONTACTS



➔ Arizona State Parks and Trails	1-877-MY-PARKS Reservations at AZStateParks.com
➔ Off-Highway Vehicle Information	(602) 542-2146 • AZStateParks.com/ohv
➔ State Historic Preservation Office	(602) 542-4009
➔ Arizona Game & Fish Department	(602) 942-3000 • azgfd.com
➔ Operation Game Thief 24-hour Hotline	(800) 352-0700
➔ Fishing Regulations	azgfd.com/fishing
➔ Hunting Regulations	azgfd.com/hunting
➔ Arizona State Land Department	(602) 542-4631

TRAVEL AND SAFETY

➔ Arizona Office of Tourism	(602)-364-3700 • visitarizona.com
➔ Arizona Fire Restrictions	(877) 697-2757 • wildlandfire.az.gov
➔ Arizona Highway Patrol	(602) 223-2000
➔ Arizona Road Conditions	(888) 411-7623
➔ Traveler Information Service	511 (In Arizona) • az511.gov
➔ Emergencies	911

9 NATIONAL PARKS
AND MONUMENTS

— PLUS —

8 ARIZONA
STATE PARKS

WITHIN A 2-HOUR DRIVE OF FLAGSTAFF—
YOUR PERFECT HUB WITH HOTELS, RESTAURANTS, BREWERIES AND MORE.



WUPATKI NATIONAL MONUMENT

Pick up a FREE Official Visitor Guide at the Flagstaff Visitor Center, One E. Route 66.

discoverflagstaff.com

STAY & PLAY RESPONSIBLY

Preservation



Thank you for taking care of our parks! We invite you to apply the seven core Leave No Trace principles ([LNT.org](https://lnt.org)) during your travels. You can make a difference by (1) **Planning ahead and preparing.** (2) **Traveling and camping on durable surfaces.** (3) **Disposing of waste properly.** (4) **Leaving what you find.** (5) **Minimizing campfire impact.** (6) **Respecting wildlife.** And (7) **Being considerate of other visitors.** Please read more below.

NATURAL AREAS

Arizona State Parks and Trails is responsible for more than 64,000 acres of parklands, about half of which are designated as Natural Areas. The State Natural Areas preserve and protect "parcels of land or water that contain examples of unique natural terrestrial or aquatic ecosystems, rare species of plants and animals and unusual or outstanding geologic or hydrologic features." These sites contain critical ecological communities supporting rare and sensitive flora and fauna, serving as a base for studying natural resources and provide an indispensable link to Arizona's natural heritage.

There are currently three designated State Natural Areas (SNA): **Sonoita Creek**, **Verde River Greenway**, and **San Rafael**. Additionally, several parklands contain substantial natural features that contribute to regional ecological processes and meet the criteria for Natural Areas within an existing park. Arizona State Parks and Trails works with a broad range of partners to help protect these Natural Areas for future generations.

A Natural Area success story, the **Gila top minnow**, a rare species of native Arizona fish, now has a better chance to thrive at **Sonoita Creek SNA**. The spring-fed pools here are home to one of the largest remaining wild populations of the endangered top minnows.

The **Verde River Greenway SNA**, a stretch of the Verde River located in Yavapai County, is a Natural Area. It was originally identified in the late 1980s as a critical portion of the river based on its rich natural and cultural resources as well as a growing demand for recreational use. In 2006, the Arizona State Parks Board expanded the Verde River Greenway Project beyond the original six-mile stretch to encompass 30 miles of riparian wildlife corridor. In tandem with the expanded Greenway vision, additional land will soon be added to the Greenway to protect the habitats of the **southwestern willow flycatcher** and **bald eagle**.



ANNUAL RETURN OF THE BATS



During March, the rangers at **Kartchner Caverns State Park** turn their attention to warm, furry, little creatures that fly the summer night skies. Eagerly anticipating the return of a small colony of *Myotis velifer*, or the common cave bat, rangers scan the evening sky to catch a glimpse of the first tiny bats returning to their summer home.

Though nobody knows for sure where the colony spends their winter, rangers suspect they may hibernate in caves located high in the **Huachuca Mountains**, only about 40 miles away from the park. About 2,000 bats live in part of the caverns seasonally each year. Rangers at Kartchner Caverns State Park count the bats each summer, and the data show that the colony is maintaining its population. In 2001, the count was about 900. In 2003, that number had doubled. The population has fluctuated since. In 2015, the population was 1,086; in 2016, the population was 2,131; in 2024, the population reached 2,491.

The bat population can vary annually for many reasons. The biggest known factors are climate, specifically how much precipitation, and food sources. In this case, bugs, and lots of them!

During the summer, Cave Unit staff count the bats once a week at twilight, with a hand-held counter. As the bats leave their home that night, the rangers sit quietly in darkness and count each one they see.

Each year on April 15, Cave Unit staff close all the doors to the **Big Room**, turn out the lights, and even pull out the electrical plugs to be sure no lights come on during summer. They will not enter that part of the cave until late September, after the bats have migrated away. The Big Room re-opens to the public on October 15. The Rotunda/Throne tour, which has no bats, stays open year-round.

During the summer, the colony of bats is busy giving birth, raising their pups, and teaching them to fly and hunt. The rangers feel good about honoring the privacy of the bats, knowing these creatures are continuing their life cycles, which have existed here for thousands of years.

The annual return of the bats to Kartchner Caverns State Park is a major indicator that the efforts made by the park rangers to protect the cave environment are working.



INVASIVE SPECIES

Invasive species in Arizona are a serious and growing problem. They represent a significant threat to the economic and ecological health of the state. These non-native species can cause harm to the local ecosystem, and may even jeopardize human and economic health. Many non-native species have been introduced intentionally, while others have hitchhiked on boats, commercial transports, pets, humans, livestock, and automobiles. Regardless of how they reached Arizona, these invaders spread into parks, preserves, wildlife refuges, and urban spaces.

The **Arizona Invasive Species Advisory Council (AISAC)** has developed an initial working list of plants that pose a significant threat to Arizona's wildlands, and has made the development of a non-native wildlife species list a high priority.

Invasive aquatic fauna species include **bullfrogs, crayfish, red-eared sliders** and **non-native fishes**. One of the latest invasive species to arrive in Arizona is the **quagga mussel**, a disruptive invader and cousin of the **zebra mussel**, which is spread by boats. Invasive plant species disrupt local ecosystems by displacing native plants and add potential fuel to wildfires. Invasive plant species found in Arizona include **buffel grass, fountain grass, globe chamomile (stinknet),** and **puncturevine (goatheads)**. (Photo: volunteers removing buffel grass at Catalina State Park.)

Be aware and help stop the spread of invasive species. Assist resource managers in combating invasive species in Arizona by being aware that you, a trail user, boater, outdoor enthusiast, home gardener, traveler by plane, car, or bicycle, could potentially transport these species. Learn more at AZStateParks.com/Invasive-Species.

BE CAREFUL WITH FIRE



When you follow the principles you help protect and preserve Arizona's natural landscapes for this and future generations.

Learn more at AppreciateAZ.com

APPRECIATEAZ

ARIZONA

LEAVE
NO TRACE

Featured Coalition
Partner:

ARIZONA
STATE PARKS & TRAILS

History & Culture



With its unique landscapes, destinations, habitats, and cultures, Arizona offers something for everyone. Today, more than seven million Arizonans live in places as varied as metropolitan Phoenix and Oraibi on the Hopi Mesas, one of the longest continuously-inhabited communities in North America. There are thousands of reminders of earlier lives, including ancient Native American settlements to like those at **Homolovi State Park** and **Walnut Canyon National Monument**.

NATIVE AMERICANS

Native Americans have been living in Arizona for at least 12,000 years. During the last Ice Age, “Paleoindian” bands moved about the landscape, gathering edible plants and hunting game. The end of the Pleistocene epoch corresponded with dramatic ecological changes, which triggered lifestyle adjustments.

About 4,000 years ago, these groups learned about maize. Over time, some of them became reliant on agriculture, which led to greater sedentism, rising populations, and growing social complexity. New archaeological traditions developed in different parts of the Southwest, based on available resources, climate, and proximity to neighboring groups. During the first millennium CE, the largest of these were the **Hohokam**, **Ancestral Puebloans**, **Mogollon**, and **Patayan** (or **Hakataya**).

The Hohokam tradition dominated much of central and southern Arizona. Early on, people in Hohokam communities lived in “pithouses.” Later, Hohokam villages had apartment-like compounds and giant platform mounds, like Pueblo Grande (in Phoenix), Mesa Grande (in Mesa), and Casa Grande National Monument (in Coolidge).

Ancestral Puebloan tradition was centered in the **Four Corners** region. They too lived in pithouses early on, but later switched to pueblos built of stone.

These include **cliff-dwellings**, such as at **Montezuma’s Castle National Monument** and those in **Canyon de Chelly**. The Mogollon culture area included eastern Arizona and their early sites are similar to early Hohokam sites, while later Mogollon settlements resemble later Ancestral Puebloan villages. Mogollon sites include Shofly Village and Rattlesnake Point. Patayan (or Hakataya) culture area lies in the riverine lowlands of western Arizona, along the lower Gila and Colorado rivers. Although Patayan communities did rely on agriculture, they lived in smaller groups. Patayan communities were



similar to Hohokam settlements, but on a smaller and more mobile scale.

Late in prehistory, Southwestern Indian communities experienced demographic change, including migration, dispersion, and coalescence. In the Hohokam area, some families dispersed across the landscape. Their descendants include the **Akimel O’odham**, **Tohono O’odham**, and **Piipaash**. Those descended from the Patayan tradition include the **Cocopah**, **Quechan**, and **Chemehuevi**. In the ancestral Puebloan and Mogollon areas, it seems that most people left their small villages and moved to very large settlements or settlement clusters. These include Hopi, Zuni, and the “Eastern Pueblos” along the northern Rio Grande.

While these changes were occurring, new people were arriving in the Southwest. **Southern Athapaskan** groups came down from the sub-arctic and eventually split into bands of what we know today as **Navajo** and **Apache**. Yuman-speaking Pai Indians – the ancestors of today’s **Yavapai**, **Hualapai**, and **Havasupai** – may have come from the Great Basin or Lower Colorado River, and spread throughout northern and western Arizona.

Ancestral sites are not the only windows into our state’s Native American history. Visitors can explore military outposts like Fort Verde State Historic Park and Fort Bowie National Historic Site, where soldiers and Indian Scouts lived while fighting during the Indian Wars of the late 19th century. They can also visit modern testaments to recent Native American history, such as the **Navajo Code Talker Memorial** in Phoenix, or the Tohono O’odham Himdaag Ki cultural center in Topawa.

SPANISH EXPLORERS AND MISSIONARIES

On the Tohono O’odham reservation south of Tucson stands the **San Xavier del Bac Mission**, built for Father Eusebio Kino in 1700 and still in use today. The Jesuit missionary accompanied the Spanish invasion of what is now Arizona, pulsing north out of Mexico between 1540 and 1821.

The Spanish established a chain of missions, forts, towns, and ranches throughout the region. One of the early Spanish forts was **Tubac Presidio**, now a state historic park. Several of our state parks owe a portion of their history to Spanish exploration, including Jerome State Historic Park and San Rafael State Natural Area.

MEXICAN INFLUENCE

After gaining independence from Spain in 1821, Mexico claimed governorship of Arizona until the United States gained control of the region following the **Mexican-American War of 1846–48**. Regardless of such changes, Arizona has always been influenced by other cultures, including Mesoamerican societies, Spain, and Mexico. Today, those with Hispanic ancestry account for about 31 percent of Arizona’s residents.

WESTWARD EXPANSION

The arrival of the railroad in 1881 opened the state to mass settlement. Construction of **Roosevelt Dam** on the Salt River in 1911 and **Hoover Dam** on the Colorado River in 1935 harnessed the waterways for hydroelectric power generation and the use of desert lands for agricultural and urban uses. World War II opened the state to industrial development, and the post-war era of suburban growth transformed Phoenix into one of the largest cities in America.

Things To Do



Arizona's state parks and natural areas are rich in diverse and exciting recreational and educational opportunities. Visitors can hike from **Cottonwood to Sedona** on the historic **Lime Kiln Trail**, cruise under the **London Bridge of Lake Havasu**, or camp among towering saguaros in **Catalina State Park**. In the summer, head to higher elevations to cool off in Arizona's natural water slide at **Slide Rock State Park**. Here are a few highlights by activity and features.

PARK PROGRAMS

Learning can be fun; let the parks be your classroom! Many parks offer guided hikes and nature talks or history programs about the area. Have you always wanted to hike by the light of a full moon? Or learn about some of the early survival methods used by the Sinagua Indians over 1,000 years ago? Star Parties and astronomy events have become a popular program at many state parks. For more information, check the Arizona State Parks and Trails calendar at AZStateParks.com/events, or contact the park directly.

BICYCLING

Arizona offers a wide-variety of road and trail riding throughout the state, with some of the best year-round riding weather in southern Arizona. Bikes are welcome at Arizona state parks. Explore the parks' roads by bike, ride on the designated mountain bike trails, or tour from park to park.

HIKING

Arizona State Parks and Trails boast more than 180 miles of hiking trails. A great way to experience them is the **Lime Kiln Trail**, which links **Dead Horse Ranch State Park** in Cottonwood with **Red Rock State Park** in Sedona. The trail is about 15 miles and follows the old Lime Kiln wagon trail. Many state parks offer great hiking. Trails at **Catalina State Park**, located within the **Coronado National Forest** near Tucson,

wind through ruins, perennial pools, and a variety of vegetation. At Oracle State Park, you can connect to the **Arizona Trail**, an 800-mile trail stretching through Arizona from Mexico to Utah.

Hike to the 3,374-foot summit of **Picacho Peak State Park**, situated between Phoenix and Tucson, for a birds-eye view of the desert. **Dead Horse Ranch State Park**, in the Verde Valley north of Phoenix, offers a diverse, multi-use trail system for hikers, mountain bikers, and equestrians. **Lyman Lake State Park** in northeastern Arizona provides a unique opportunity to walk back in time on the Petroglyph Trail.

HORSEBACK RIDING

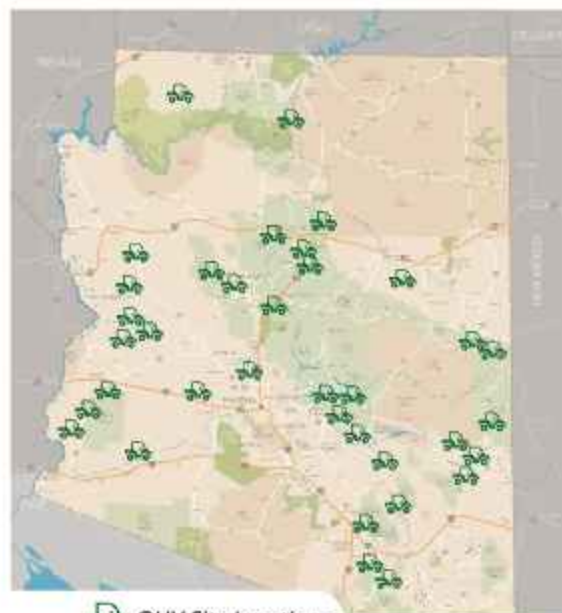
Nothing evokes the Old West as much as saddling up a horse and hitting the trail, whether you're taking in the scenic Verde River or the desert's myriad cacti. You can visit **Dead Horse Ranch State Park** and **Catalina State Park**; both offer horseback riding and an equestrian staging area with the option for overnight horse camping.

HUNTING

Although hunting is prohibited on State Park property, our cabins and campgrounds make great base camps for your adventure. Contact the Arizona Game and Fish Department at (602) 942-3000 or visit azgfd.com for more information or book your campsite at AZStateparks.com/reserve.

OFF-HIGHWAY VEHICLES

Arizona State Parks, in partnership with the Off-Highway Vehicle Ambassadors and the State off-highway vehicle clubs, offers an exciting program to help people explore the hidden parts of Arizona. Whether you are new to OHV or just want to learn the best places to ride, exciting free guided maps for trails around the state! Check AZStateParks.com/OHV for safety information and regulations, trail maps, staging areas, responsible recreation best practices, events, volunteer opportunities, and more.



OHV Site Locations

FOR MORE
INFORMATION
ON ALL
DESIGNATED
OHV AREAS IN
THE STATE,
SCAN THE QR:



Yamaha Outdoor Access Initiative provides funding to promote safe, responsible use of OHVs, educate the public on proper recreational land use and wildlife conservation practices, and protect appropriate and sustainable access to public lands.

See if your group qualifies and apply at:

yamahaoai.com

Before heading out on the trail, make sure you check out the rules, safety tips, and ways to ride responsibly in the state.

RECREATE RESPONSIBLY

When traveling backcountry throughout Arizona, we all have a responsibility to the environment, to others and ourselves. Using the backcountry for solitude, recreation, and adventure is an Arizona tradition going back hundreds of years. Everyone using the state's public lands should do their part to ensure that these lands remain available to future generations to enjoy. Many areas attract a variety of different kinds of backcountry users. **Practice minimum impact and common courtesy.**

Planning and common sense will improve your backcountry experience. Travel within the ability of your equipment and your fitness to handle changing weather conditions. Use only trails and routes that you know are legally open, and are dry enough to be suitable for travel. By choosing your time to use the backcountry carefully, such as early morning or weekdays, you can avoid crowds in high-use areas. Common courtesy will go a long way

toward ensuring a pleasant experience for others as well as yourself. Good practices on the trail and in camp preserve the environment and our privilege of continuing to enjoy our backcountry areas.

GENERAL SAFETY GUIDELINES

- Be prepared! Wear protective gear, and bring plenty of water.
- Water, water, and more water!
- Tell a responsible person where you are traveling and when you will be returning.
- Do not go alone. Consider riding with a club.
- Never ride under the influence of alcohol or drugs.
- Never carry a passenger on a single-rider vehicle.
- Supervise riders younger than 16. Parents are responsible for their children's safety.
- Know your vehicle. Read the owner's manual.
- Check your vehicle before each trip.
- Take an off-highway vehicle safety and mechanical training class.

OHV DECALS

All off-highway vehicles designed by the manufacturer primarily for use over unimproved terrain and that weigh 2,500 pounds or less are required by law to display a valid OHV decal to operate on public and state trust lands in Arizona. This includes "street legal" vehicles that meet these two requirements. A step-by-step guide for purchasing a non-resident OHV decal is available at AZStateParks.com/OHV. To get started, you'll need to sign up for an Arizona Game and Fish Department Portal account at Accounts.azgfd.com/Account/Register. Decals can only be purchased through the Arizona Game and Fish Department.



RMAX2 1000 LIMITED

THE ALL-NEW RMAX4 1000 LIMITED

MAXIMUM PERFORMANCE FOR MAXIMUM ADVENTURES

WOLVERINE® RMAX® FAMILY

Setting the industry benchmark for capability, comfort and confidence, Yamaha's new 2025 Wolverine RMAX 1000 Side-by-Side lineup offers a wide range of key enhancements designed to maximize your adventure.

Visit YamahaMotorsports.com

Professional riders depicted on covered vehicles. Side-by-Side models shown are recommended for use only by operators 16 years and older with a valid driver's license. Always wear your seatbelt. Helmet, eye protection and protective clothing. Yamaha motorcycles that are Side-by-Side are not for off-road use. For Side-by-Side safety and training information, see your dealer or visit the RMAA at www.rmaa.org. Read the Owner's Manual and the product warning labels before operation. Models shown with optional accessories. Vehicle specifications subject to change. *Original limited retail warranty; see price dealer for details or visit YamahaMotorsports.com/USA Yamaha Motor Corporation, U.S.A. All rights reserved.

ARIZONA'S LAKE AND RIVER PARKS

Arizona may be known for its deserts, but its lakes and rivers are also treasured. **Lake Havasu State Park** is especially popular in the summer for swimming and fishing. **Alamo Lake State Park** is an angler's dream, and when night falls, you'll find some of the best stargazing around. For a more peaceful time on the water, look no further than **Fool Hollow Lake Recreation Area**, known for the fishing and crisp mountain air. Tucked away in the rolling hills of southern Arizona, discover the hidden wildlife treasures at **Patagonia Lake State Park**. A transformation is happening on the Colorado River in Yuma thanks to wetland restoration. Stroll along the river between **Colorado River** and **Yuma Territorial Prison State Historic Parks** and see how the community is reclaiming the area for native vegetation, fish, and wildlife.

BOATING

Arizona's lakes, rivers, and reservoirs are a treasure in the desert state and a great place to have fun. Enjoy scenic shorelines and beautiful beaches at **Lyman Lake State Park**

and **Cattail Cove State Park**, the best bass fishing at **Alamo Lake State Park**, canoe and kayaking rentals at **Fool Hollow Lake Recreation Area** and **Patagonia Lake State Park**. Remember you share the water with others who may not be familiar with boating rules and safety procedures. Generally, children under 12 may not operate a watercraft with a motor greater than eight horsepower, unless an adult is on board. For more information on registration, boating laws, and responsibilities, contact the Arizona Game and Fish Department at **(602) 942-3000** or visit azgfd.com.

FISHING

A variety of fishing opportunities across the state provide anglers a chance to catch a number of species, including large mouth bass, rainbow trout, channel catfish, and bluegill. A valid fishing license is required (except children under age 10. You may purchase a fishing license from a local dealer or Arizona Game and Fish Department office. Contact **(602) 942-3000** or visit azgfd.com.

FISH SPECIES

Catch unforgettable memories during your park visit... Check out this quick reference guide to help you know what to catch, where, and when! Then plan a trip, and reel in the good times!

	Channel Catfish	Crappie	Flathead Catfish	Largemouth Bass	Northern Pike	Rainbow Trout*	Smallmouth Bass	Striped Bass	Sunfish	Walleye
→ ALAMO LAKE	•	•		•					•	
→ COLORADO RIVER PARKS (Buckskin Mountain, Cattail Cove, Lake Havasu, River Island)	•		•	•			•	•	•	
→ DEAD HORSE RANCH LAGOONS	•			•		•			•	
→ FOOL HOLLOW LAKE				•	•	•	•		•	•
→ LYMAN LAKE	•			•						•
→ PATAGONIA LAKE	•	•	•	•		•			•	
→ ROPER LAKE	•			•		•			•	

*Oct to March

VOLUNTEER IN THE PARKS!

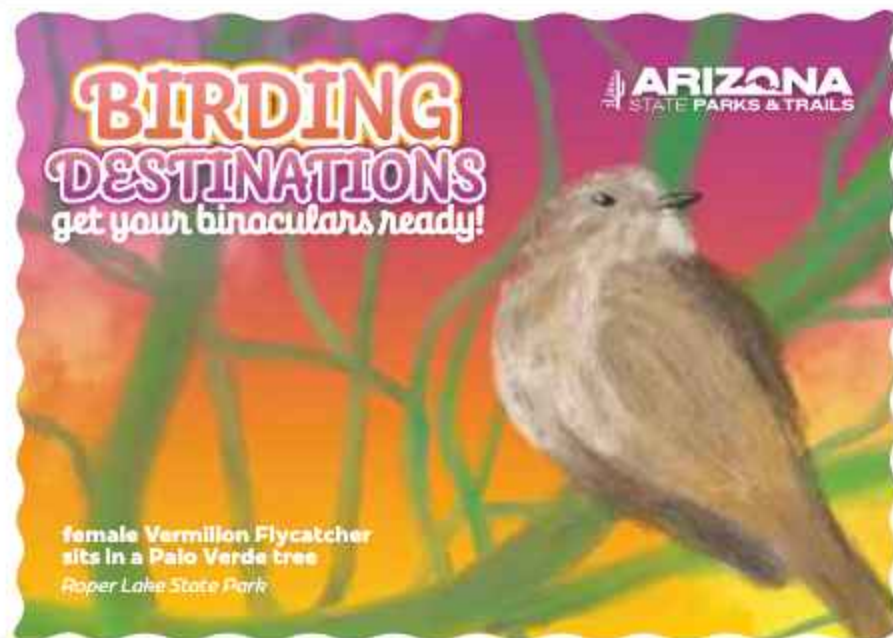
Have you ever dreamed of leading nature talks, assisting with interpretive programs at an 1870s military outpost, or leading discussions about ancient Native American cultural artifacts? Arizona State Parks and Trails has many different ways for you to donate your time and talents and welcomes volunteers for one-time projects as well as long-term assignments. If you live near a park, you may choose to be a local **Parks Volunteer** on a regular basis. There are also opportunities for community outreach at local events and office volunteers for our Central Office in Phoenix.

If you're interested in archaeology and paleontology, become a **Site Steward** volunteer. Site Stewards help protect and preserve the cultural resources and the heritage of Arizona. Their primary role is to monitor archaeological, historical, and paleontological sites and report any looting or vandalism to the land manager. Site Stewards make an important contribution to



preserving our cultural heritage by working closely with archaeologists and federal, state, tribal, county, and municipal agency staff.

If you have an RV and would like to volunteer on-site as a campground host or interpretive guide, please log on to AZStateParks.com/volunteer and click on the "On-Site Park Volunteers." icon. Positions may be available year-round in different parts of the state. Visit AZStateParks.com/volunteer for a list of site-specific volunteer opportunities, or submit a volunteer application. For more information, call **(602) 542-7152**.



Watchable Wildlife



BIRDWATCHING

With more than 900 animal species and 50 million public acres of natural land to explore, Arizona provides some of the best wildlife viewing opportunities in the nation. Always remember to stay at a respectable distance to avoid disturbing them. Feeding wild animals makes them dependent on handouts and unable to fend for themselves when visitors leave for the season.



COYOTES (*Canis latrans*) are abundant in Arizona and prey mostly on rodents, but will eat almost anything. Their distinct howls and yelps can be recognized by other coyotes over long distances. Often referred to in Native American lore as tricksters, coyotes are a classic symbol of the Southwest.

- **Weight:** 18 to 40 pounds
- **Length:** 32 to 40 inches long
- **Height:** 15-20 inches tall



DESERT BIGHORN SHEEP (*Ovis canadensis nelsoni*) are well adapted to live in the hottest, driest, and seemingly most inhospitable places. They eat mesquite, jojoba and grasses and get their hydration from cacti

and agaves when water is scarce.

- **Weight:** 75 to 225 pounds
- **Length:** 4 to 4.5 feet long
- **Height:** 2.5 to 3.5 feet tall at shoulders



GILA MONSTER (*Heterodermus suspectum*) is one of only two venomous lizards in the world. Unlike a snake that injects its venom with its fangs, Gila monsters have venom in their saliva and use their strong molars to break their prey's skin, allowing the saliva to enter. While rarely fatal to humans, the Gila monster's bite can be very painful.

- **Weight:** Up to 5 pounds
- **Length:** 18 to 24 inches



COUES WHITE-TAILED-DEER (*Odocoileus virginianus couesi*) is one of two deer species that inhabits Arizona and can be found in several state parks. They are most visible near dawn or dusk as they feed on open hillsides, although they tend to visit water throughout the day.

- **Weight:** Bucks, 100 pounds average/Does 65 pounds average
- **Length:** 56 inches from head to tail
- **Height:** 28-32 inches tall at the shoulder and about



Often mistaken for pigs, **JAVELINA** (*Pecari tajacu*) are actually a type of peccary. They prefer the prickly pear cactus, but will also eat flowers, fruits, bulbs, roots, grubs, and reptiles. Javelina live in herds of eight to 12 and prefer desert and arid woodland habitats.

- **Weight:** 35 to 60 pounds
- **Size:** 29 to 39 inches long
- **Height:** 17 to 23 inches tall

Imagine the sight of a great blue heron nesting at Rockin' River Ranch State Park, or watching egrets fish in Lake Havasu from the deck of a camping cabin. At Patagonia Lake State Park, you may even spot a rare and beautiful elegant trogon in the trees!

Did you know that Arizona's state parks are also great places to go birdwatching? Many of the parks are considered world-class birding destinations with a wide variety of species residing in the park every season! Most parks also offer bird hikes throughout the year led by knowledgeable guides who are eager to share their knowledge of the park's feathered inhabitants. But most agree the best time to see the widest variety of birds during the migratory seasons of spring and fall.



YOU CAN START YOUR OWN BIRDING JOURNEY BY FOLLOWING THESE SIMPLE TIPS:

1) Prepare to be outdoors. Dress for the weather, make sure you wear durable footwear, bring plenty of water and snacks, and pack out what you bring in.



Great White Egret

2) Bring a good pair of binoculars. 8x42 power binoculars are a popular size.

3) Bring a bird guide to help you identify birds by species.



Vermilion Flycatcher

Every park has a list of birds that have been sighted in the park. You can download the list from the park's website, or pick up a bird list from the park's contact station.

4) Find a comfortable place to watch. Many parks have benches or blinds for bird watching, but our more adventurous visitors hike out to find a bird's nest or natural feeding area, and find a spot behind a tree or bush to obscure their presence.



Varied Bunting

5) Be patient! Sit and wait long enough, and nature will reveal itself to you. Stay quiet and don't make any sudden movements, and you'll be rewarded with a visit from a colorful little friend.



Elegant Trogon

MAKE SURE YOU SHARE YOUR BIRDING STORIES OR PICTURES WITH US AT AZSTATEPARKS.COM/BIRDS-OF-ARIZONA.

Camping



Arizona State Parks offers 15 camping parks with a wide variety of amenities, as well as eight parks with camping cabins. Whether you are looking for a campsite surrounded by pine trees at a high elevation or a desert site with saguaros and mountain views, there are choices statewide. Campsites include full electric RV sites as well as tent (dry) campsites. Clean restrooms and shower buildings are nearby. With hiking trails, lakes, rivers, history, and adventure waiting outside your tent or RV, you'll want to make a reservation to stay for a weekend or a week! Campsites can be reserved up to a year in advance on a first-come, first-served basis.

CAMPGROUNDS

Many campsites offer electric and water hook-ups for RV and tent campers, as well as showers and picnic areas. All camping parks offer reservations online or by phone, other campsites are available on a first-come, first-serve basis. Types of camping sites and amenities vary. Call (877) MY-PARKS or check online at AZStateParks.com/reserve for information and availability.

FEES

Camping fees range from \$25 to \$50 per night. Reservations are available online or by phone for all camping parks. A non-refundable reservation fee per site will be added to the camping fees at the time of payment. Fees are charged per site. Individual developed campsite fees are based upon one vehicle per campsite. Each additional vehicle will be charged \$15 per vehicle per night. Cash and credit cards are accepted.

GROUP CAMPING

Several state parks offer group camping sites, available by reservation (fee required). Contact individual parks for more information.

RESERVATIONS

All 15 camping parks accept reservations by phone or online. The reservation

system can be accessed online 24 hours a day at AZStateParks.com, or by calling the Arizona State Parks and Trails Reservation Center at (877) MY-PARKS, open seven days a week between 8 a.m. and 5 p.m. Arizona time.

There is a non-refundable reservation fee assessed per campsite. A maximum of five sites are reservable by one party. There is a two-night minimum for peak season weekend reservations (Friday through Sunday). Contact the parks or go to AZStateParks.com for detailed reservation information and cancellation policies.



ADVERTISEMENT



insure your investment

Do you really need RV insurance on your travel trailer?

As RVers, we know the allure of the open road and the freedom it offers. However, with freedom comes responsibility, including the important decision of securing insurance.

What is RV insurance?

RV insurance is designed to cover various types of RVs, including travel trailers, toy haulers, motor homes, fifth wheels, and camper vans. While liability insurance is not required for most travel trailers, having RV coverage could benefit you and your adventures.

How can RV insurance protect you?

- **Protection against accidents:** May provide financial protection for repair costs, medical expenses, and liability in case of an accident.
- **Coverage for theft and vandalism:** Could help with repairs or replace your trailer with less out-of-pocket expenses if it's lost or stolen.
- **Natural disasters and weather events:** May cover the cost of damage from storms, floods, or other natural disasters.

Is your travel trailer covered under your home or auto insurance?

While your home or auto policy can protect your trailer in certain instances, it can also leave you with gaps in your coverage.

For example, your auto policy may only cover your trailer while you're on the road, not if you're parked or at a campsite. The same goes for home insurance—if you're on your home's property it might be covered, but damage from a storm at a campground wouldn't be.

What specialized coverages does Progressive offer?

Progressive offers a variety of specialized coverages that aren't included on a standard auto insurance policy like:

- **Roof Protection Plus®:** Covers repairs or replacements for RV roofs, including if the cause is wear and tear.*
- **Pest Damage Protection™:** Covers the cost of repairs from pest infestations.*

Confidence on the road

Having RV insurance gives you confidence you're protected no matter where you roam. From remote national parks to bustling campgrounds, RV insurance ensures you have the support and financial protection you need if something goes wrong.

While insurance for your travel trailer may not be legally required, it's a crucial investment in protecting your RV, finances, and peace of mind.

PROGRESSIVE

Progressive Casualty Ins. Co. and affiliates. Product features are subject to policy terms and conditions and may not be available in all states or for all vehicles and coverage selections.

*Available for RVs less than 6 years old, and a \$250 deductible applies to any claim.

Scan to get a quote in as little as 4 minutes.

Go to progressive.com to learn more.



ARIZONA FAMILY CAMPOUT PROGRAM



The **Arizona Family Campout Program** is designed for families that have little or no experience camping. Arizona State Parks and Trails hope to introduce you to the great experiences you can share with your loved ones and inspire you to continue to explore the great outdoors! These weekend adventures take place at a variety of Arizona state parks.

Based on the park, participant ages, and weather, the following activities may be part of your weekend adventure: guided hikes, mountain biking, archery, geocaching, fishing, live animal demonstrations, campfire stories, and presentations on geography, birding, geology and astronomy.

The program provides tents, sleeping mats, camp chairs, lanterns, backpack, camp stove, first aid kits, and all activity equipment. We'll also have drinks and campfire snacks available for you!

Families need to provide sleeping bags (or other bedding), refillable water bottles, cookware, pillows, clothing, sturdy shoes, and personal items (toothpaste, towels, soap, etc.). Families also need to provide enough food for four meals. The registration fee is \$90 for a family of four. Additional family members cost \$5 each up to six people. One family per registration.

For more registration information, including a list of participating parks and to make arrangements for larger families, groups, and or other special arrangements, please visit **AZStateParks.com/Family-Camp**. The program is available to all children at least 6 years old, but sorry, not your pets!



Grand Canyon



Grand Tetons



Yellowstone Park



Yosemite Valley



Glacier Park

Explore USA & Canada on a fully guided tour with Caravan. Or, join Caravan in Latin America. Book now for choice dates: Caravan.com, 1-800-CARAVAN

Visit America's Parks on a Fully Guided Caravan Tour

Welcome to a great vacation at an affordable price. With Caravan, you stay at excellent hotels in great locations, national park lodges, and scenic resorts.

The #1 in value—Fully guided tours since 1952. These quality tours feature complete sightseeing, professional Tour Directors, and great itineraries. Join the smart shoppers and experienced travelers who have chosen Caravan since 1952. Book now for choice dates: Caravan.com, 1-800-CARAVAN

"Brilliant, Affordable Pricing"
Arthur Frommer, Travel Editor

Latin America Tours

- 8 Days Costa Rica Natural Paradise
- 8 Days Panama Tropical Adventure
- 10 Days Colombia
- 8 Days Peru with Machu Picchu
- 8 Days Dominican Republic
- 8 Days Guatemala
- 10 Days Mexico Copper Canyon Train
- 10 Days Mexico Ancient Civilizations
- 8 Days Mexico Colonial Cities
- 8 Days Mexico Oaxaca with Puebla
- 8 Days Mexico Yucatan Peninsula

USA & Canada Tours

- 8 Days Grand Canyon, Bryce, Zion
- 9 Days Mt Rushmore & Yellowstone
- 8 Days New England & Fall Colors
- 9 Days Nova Scotia & Maritimes
- 9 Days Canadian Rockies & Glacier

Caravan®

Available Only at Caravan.com or 1-800-CARAVAN



Water & Heritage Corridor

Take a trip to Arizona's "west coast," where four state parks offer ample water activities, camping, and boating. White sand beaches and world-class fishing also await you, as well as cabins right on the water at Lake Havasu State Park. Further inland, Alamo Lake, only a short distance away, adds to the featured camping, wildlife viewing and superb fishing opportunities. Here, visitors also have myriad off-highway trails to explore as well as air-conditioned cabins for the day's end. Downriver, discover Yuma's history and heritage as an agricultural oasis and learn about the vital role it played in creating Arizona's story.



WHAT TO LOOK FOR IN WATER & HERITAGE CORRIDOR:

Fishing	Waterskiing	Kayaking	Culture/Heritage
Boating	SUP	Cabins	Off Road Vehicles
Swimming	Hiking	Tours	Camping



- Alamo Lake State Park
- Buckskin Mountain State Park
- Cattail Cove State Park
- Colorado River State Historic Park
- Lake Havasu State Park
- River Island State Park
- Yuma Territorial Prison State Historic Park

Alamo Lake State Park ↓

Nestled in the Bill Williams River Valley away from the hustle and bustle of everyday life, Alamo Lake is one of Arizona's best-kept secrets. Along with rest and relaxation, visitors enjoy premier bass and crappie fishing. Spring rains bring an abundance of wildflowers and the lake environment attracts a variety of wildlife year round, including bald and golden eagles, waterfowl, foxes, coyotes, mule deer, and wild burros. Stargazers are sure to enjoy the unbelievable view of the night sky, with the nearest city lights some 40 miles away! Camping is a great way to take advantage of these incredible star-viewing opportunities. Each fall the park hosts a star party to explore the night sky.

Alamo Lake was created with the completion of Alamo Dam in 1968. Unusually high flows during the late 1970s and through the 1980s have increased the average size of the lake, helping to create one of **Arizona's best fishing holes**. Fishing tournaments are common at the lake and anglers have an excellent opportunity to catch bluegill, largemouth bass, channel catfish and black crappie.

Stop by the **Almo Lake Park Store** for camping and fishing supplies, including ice, firewood, fishing licenses, minnows, and food. The park is open daily. Check **AZStateParks.com** before your visit. The park is located 37 miles north of Wenden (off U.S. Route 60) on Alamo Dam Road, Wenden, AZ 85357; (928) 669-2088. Phone available during visitor center hours only.



↑ Buckskin Mountain State Park

Buckskin Mountain State Park commands one of the finest views along the Parker strip, an 18-mile stretch between Parker Dam and Headgate Dam. Mountains line the river on both the Arizona and California sides, making this picturesque park a scenic respite with prime mountain hikes and fun-filled water adventures. The park has a beach, basketball and volleyball courts, dog run, desert tortoise terrarium and ranger station.

The park offers programming throughout the fall and winter months. Additional fees may apply, so please check with the park staff.

The park is open daily. Park hours may change. Check **AZStateParks.com** before your visit. The park is located at 5476 N. U.S. Highway 95, Parker, AZ 85344; (928) 667-3231.

WE KNOW YOU'RE WILD FOR FLAGSTAFF

JOIN US IN KEEPING OUR WILD PLACES WILD



**IF YOU SEE IT,
PICK IT UP
AND PROPERLY
DISPOSE OF IT.**

Pick-up a FREE trash bag at the Flagstaff Visitor Center.



**PARK YOUR CAR.
RIDE A BIKE OR
ENJOY A BUS RIDE.**

The Mountain Line Bus System is a convenient way to navigate Flagstaff.



**IF YOU'RE
DRIVING,
CARPOOL.**

Take advantage of FREE electric vehicle charging stations.



**STAY ON OPEN
AND DEDICATED
TRAILS.**

Help us sustain our trails by donating to the Flagstaff Trails Initiative, text wild4Flag to 44321.



**STAY AND PLAY
RESPONSIBLY.**

Always be prepared, have a plan and a backup plan.



**BE A STEWARD
OF THE LAND.**

Respect others, the natural environment and wildlife.



**KNOW HOW
TO PREVENT
WILDFIRES.**

Know and follow all fire restrictions in effect.



**STOP BY THE
FLAGSTAFF
VISITOR CENTER**

Pick-up a FREE Official Visitor Guide to help plan your visit responsibly.



**LEARN MORE AT
DISCOVERFLAGSTAFF.COM**

↓ Cattail Cove State Park

Cattail Cove offers a chance to get away and enjoy tranquility along Lake Havasu. The 45-mile-long lake creates a haven for **water sports** enthusiasts, who can boat on the blue waters, sail into quiet coves, or use personal watercraft or water ski out on the open lake. Kayaks are now available for rent at the park! Inquire at the ranger station. Anglers will enjoy **fishing** for small, largemouth and striped bass, channel and flathead catfish, bluegill and crappie. Camping is available, but if campgrounds are not your style and you have your own boat, motor out to a rustic campsite on the lake. The area surrounding the park is also a geologist's paradise. Rock, geodes, jasper, obsidian, turquoise, and agate can be found outside **Lake Havasu City**. Stop by the butterfly garden or take a stroll through the labyrinth while you're visiting.

The park is open year-round, 24 hours a day. *Park hours may change. Check **AZStateParks.com** before your visit.* The park is located 15 miles south of Lake Havasu City on Highway 95, Lake Havasu City, AZ 86405; (928) 855-1223.



The two sides of this park are as different as night and day—or maybe weekend and weekday. During summer months, weekend revelers use the park as a favorite launching point to cruise the lake, explore the scenic shoreline and float under the **historic London Bridge** of Lake Havasu City. Weekdays are more peaceful, as fishermen come to fish the open waters or find a quiet cove. Whatever your speed, Lake Havasu is an ideal place to enjoy beautiful beaches and nature trails. Convenient RV and tent campsites, with 50 amp electrical and potable water, provide campers with an excellent view of the lake.

Beautiful three-room camping cabins line a section of the shore with stunning views and white sand beaches. The 13 cabins are available for reservation year-round.

The **Arroyo-Camino Interpretive Garden** showcases the diverse life that exists within the park and in this area of

the desert, a transition zone between the Sonoran and Mohave deserts.

Birds, lizards, and desert cottontails are common sights.

At 1.5 miles in length, the **Mohave Sunset Trail** is a great way to stretch your legs and take in the sights as it winds through the lowland desert and along the shoreline.

Boat and jet ski rentals are available at **Wet Monkey Powersports Boat Rentals**. Please visit wetmonkeyrentals.com or call (928) 855-2022 for more information.

Havasu Riviera Marina is now available as a concession of Lake Havasu State Park. Visit HavasuRivieraMarina.com for more information.

The park is open daily. *Please check **AZStateParks.com** before your visit.* The park is located at 699 London Bridge Rd., Lake Havasu City, Arizona 86403; (928) 855-2784.

River Island State Park

River Island State Park is located 1.5 miles east north of Buckskin Mountain State Park and is an ideal destination for tent campers and RVers. Enjoy a sandy beach (sheltered from the main river channel in a cove), boat launch, hiking trail, dog run, 50 amp electric sites and access to OHV backcountry roads. Also available is a group ramada with a campfire ring and large BBQ grill. The ramada area is available for group day use (reservations for this area are available with some restrictions). The park and ranger station are both open daily. The park is located at 5200 N. U.S. Highway 95, Parker, AZ 85344; (928) 667-3386.

Colorado River State Historic Park

Park exhibits focus on the past, present, and future of the Colorado River, and follow the river's story through two time periods: the U.S. Army's construction and operation of the site as the Yuma Quartermaster Depot (1865–1883), and the later occupation of the depot grounds by the Bureau of Reclamation (1904–1949). Due to its location on the Colorado River, the Yuma Depot became the primary supply depot for the U.S. Army in Arizona Territory during the Indian Wars period. Later, the Bureau of Reclamation transformed the site into their Yuma Project headquarters. The Yuma Project turned the desert of the Yuma Valley into one of the nation's richest agricultural areas. The park is home to a visitor center, exhibits, video presentations, gift shop, pie/tea shop (seasonal), picnic areas, group use areas, and restrooms. The park is open Thursday through Sunday in the summer and Tuesday through Sunday from October 1st to May 31st. The park is closed on Thanksgiving, Christmas Eve, and Christmas Day. The park is located at 201 N. 4th Avenue, Yuma, AZ 85364; (928) 329-0471.

Yuma Territorial Prison State Historic Park

On July 1, 1876, the first seven inmates entered the Territorial Prison at Yuma and were locked into the new cells they had built themselves. Walk through the actual strap iron cells and solitary chamber of the Arizona Territory's first prison. Now a **museum**, the building houses photographs and colorful exhibits of those who once involuntarily stayed there and the prison life they had to endure. A total of 3,069 prisoners, including 29 women, lived within the walls during the prison's 33 years of operation.

Despite an infamous reputation, written evidence indicates that the prison was humanely administered. The park offers a museum with exhibits, a gift shop, and a video presentation. The park is open daily, except for September 23 to September 27 for maintenance and Christmas Eve and Christmas Day. Check the website **AZStateParks.com** before your visit. The park is located at 100 N. Prison Hill Road, Yuma, AZ 85364; (928) 783-4771.

WATER & HERITAGE CORRIDOR

	ALAMO LAKE STATE PARK	BUCKSKIN MOUNTAIN STATE PARK	CATTAIL COVE STATE PARK	COLORADO RIVER STATE HISTORIC PARK	LAKE HAVASU STATE PARK	RIVER ISLAND STATE PARK	YUMA TERRITORIAL PRISON STATE HISTORIC PARK
ELEVATION (feet)	1,300	420	450	120	480	394	120
NEAREST SERVICES (miles)	38	1.5	15	1	1	1	1
CAMPING UNITS	150	80	61	0	47	37	0
BOAT CAMPING UNITS	0	0	32	0	0	0	0
VISITOR CENTER	•	•	•	•	•	•	•
CAMPING RESERVATIONS	•	•	•	•	•	•	•
BACKCOUNTRY CAMPING			•				
CONCESSION/GIFT SHOP	•	•	•	•	•		•
RESTROOMS	•	•	•	•	•	•	•
SHOWERS	•	•	•	•	•	•	•
ELECTRIC HOOK-UP SITES	•	•	•	•	•	•	•
NON-ELECTRIC SITES	•	•	•	•	•	•	•
DUMP STATION	•	•	•	•	•	•	•
CAMPING CABINS	•				•		
MUSEUM				•			•
INTERPRETIVE EXHIBITS	•	•		•			•
SELF-GUIDED TOURS		•		•			•
PICNIC AREAS / SHELTERS	•	•	•	•	•	•	•
GROUP-USE AREAS	•	•		•	•		
SWIMMING	•	•	•	•	•	•	•
FISHING	•	•	•	•	•	•	•
BOAT RAMP	•	•	•	•	•	•	•
HIKING TRAILS	•	•	•	•	•	•	•
BIKING TRAILS	•						
EQUESTRIAN TRAILS							
WILDLIFE VIEWING	•	•	•	•	•	•	•



Sedona / Verde Loop

Nestled between Grand Canyon National Park and Phoenix is one of the most beautiful and well-known areas in the country. The red rocks of Sedona provide the perfect backdrop for adventure, while nearby the Verde Valley offers an array of activities and sights. The parks in this region have some of the best hiking trails around, all with stunning scenery. Whether you are seeking a campsite to call home base or a road trip to multiple parks, there are activities for all age groups. Learn about Arizona's mining history and check out the best-preserved Indian Wars fort in the state. You can also pay tribute to the fallen Granite Mountain Hotshots at the state park.



WHAT TO LOOK FOR IN SEDONA/VERDE LOOP:

- | | | | |
|------------|----------|----------|------------------|
| Hiking | Tours | Fishing | Camping |
| Biking | Museum | Kayaking | Culture/Heritage |
| Equestrian | Swimming | Cabins | Wildlife |



- Dead Horse Ranch State Park
- Fort Verde State Historic Park
- Granite Mountain Hotshots Memorial State Park
- Jerome State Historic Park
- Rockin' River Ranch State Park
- Slide Rock State Park



Dead Horse Ranch State Park

Travel to northern Arizona's Verde Valley to enjoy water sports and abundant wildlife at this park, located in the town of Cottonwood. The 3,300-foot elevation provides mild temperatures that are ideal for hiking along the Verde River, **mountain biking** in the **Coconino National Forest**, canoeing, picnicking, fishing, watching wildlife and birds, and camping (including accessible sites, all of which are available by reservation). **Camping cabins** are also available.

The park's three fishing lagoons are stocked seasonally with rainbow trout in winter and visitors will also find large mouth bass, catfish, bluegill, and crappie. Large and smallmouth bass and catfish swim the Verde River year-round; rainbow trout are stocked November through March. The park is open daily, except for Christmas Day.

Please check AZStateParks.com before your visit. The park is located at 675 Dead Horse Ranch Rd., Cottonwood, AZ 86326; (928) 634-5283.

Verde River Greenway State Natural Area

The nearly 180-mile long Verde River is a significant resource in Arizona; it is one of the desert's last free-flowing rivers and sustains a large regional wildlife population and a lush riparian community. The river has a National Scenic River designation, and the Natural Area encompasses nearly 480 acres, is six miles long, and is **adjacent to Dead Horse Ranch State Park**. The Greenway conserves the land in its natural state, so it doesn't have restrooms or modern camping facilities. Use Dead

Horse Ranch State Park as your base camp to enjoy the **hiking, canoeing, picnicking, fishing**, and the natural surroundings of the Verde River Greenway. Please practice 'Leave No Trace' ethics (see the "Preservation" chapter).

The Verde River corridor supports nearly 20 threatened or endangered species, and has been designated as an important Bird Area by the Audubon Society. The Natural Area is open daily.

Fort Verde State Historic Park

Experience life through the eyes of a frontier soldier at Fort Verde SHP. The fort was a base for General Crook's U.S. Army Indian scouts and soldiers in the 1870s and 1880s. From 1865 to 1891, Camp Lincoln, Camp Verde, and Fort Verde were home to officers, doctors, families, enlisted men and scouts. The park is the best-preserved example of an Indian Wars period fort in Arizona. Four of the **original adobe buildings** still stand and **living history programs** are held periodically. Experience three **historic homes** listed on the National and State Register of Historic Places and furnished in the style of the 1880s. The park, Visitor Center and Park Store are open daily, except for Christmas. *Park hours may change. Check AZStateParks.com before your visit.* The park is located at 125 E. Hollamon St., Camp Verde, AZ 86322; (928) 567-3275.

Granite Mountain Hotshots Memorial State Park

The park was dedicated in 2016 to remember the 19 Granite Mountain Hotshot Firefighters who were lost on June 30, 2013, while fighting the **Yarnell Hill Fire**. Hike the trail to better understand the experience of these men and appreciate the beauty of the town and the surrounding areas. The **Hotshots Trail** begins from the parking lot trailhead and continues to the overlook, where you'll be rewarded with panoramic views, and can pay tribute at the remembrance wall. Continue the hike down the **Memorial Trail** to the site where the Hotshots were recovered. The difficult hike is approximately 3.5 miles long from the trailhead to the Fatality Site, a total of about seven miles. The park is open daily from sunrise to sunset and is located two miles south of Yarnell on southbound State Route 89. Check AZStateParks.com before your visit.

STAR NIGHT PARTY ASTRONOMY EVENTS



Arizona State Parks and Trails provides fun, educational Star Night Parties! At a typical star night event you can hear a lecture (often with guest speakers), and view celestial objects (planets, nebulae and stars) through a variety of telescopes. Some events have information tables and afternoon solar viewings as well. These events are supported by Arizona astronomy clubs,

including Astronomers of Verde Valley, Tucson Amateur Astronomy Association, Superstition Mountain Astronomical League and the Huachuca Astronomy Club of Southeast Arizona. To see upcoming event dates and participating parks, learn more about our partner astronomy clubs, and watch an introduction video with infrared footage visit AZStateParks.com/stars.

Jerome State Historic Park



Make Jerome State Historic Park and the Douglas Mansion your first stop when you visit Jerome! At the park you will learn about copper, one of the Five C's that helped found Arizona. (The other four being: cattle, citrus, climate, and cotton). Jerome dates to 1876 when three prospectors staked claims on rich copper deposits. The United Verde Copper Company formed in 1883, and with several changes in ownership, it grew to be the largest producing copper mine in the Arizona Territory by the early 20th century.

The **Douglas Mansion** has been a Jerome landmark since 1916, when

James S. Douglas built it on the hill above his Little Daisy Mine, and is now a **museum** featuring photographs, artifacts, and minerals in addition to a video presentation and a 3-D model of the town and underground mines. There are more displays outside along with a picnic area offering a beautiful panoramic view of the Verde Valley.

The park, museum and visitor center are open daily, except for Christmas Day. Check **AZStateParks.com** before your visit. It is located at 100 Douglas Road, Jerome, AZ 86331; (928) 634-5381.

→ Red Rock State Park

Surrounded by the natural beauty of Sedona's red rocks, Oak Creek meanders through Red Rock State Park and provides visitors the opportunity to experience nature along a five-mile network of trails.

The park, a center for environmental education, offers information and programs about scenic northern Arizona, including **guided geology hikes, bird walks, and moonlight hikes** with knowledgeable park staff or volunteers. The park is also included in the **Lower Oak Creek Important Bird Area**, and is home to species like the **common black hawk, wood duck, yellow-breasted chat, blue grosbeak, and common merganser**.

A guided nature walk is offered seven days a week at 10 a.m. The hike moves to 9 a.m. from June to September. The park also hosts monthly special events including lectures and moonlight hikes (seasonally). The **visitor center** is a great place to start your exploration with hands-on exhibits. **Pets are not allowed at Red Rock State Park.**

Please check **AZStateParks.com** before your visit. The park is located at 4050 Red Rock Loop Rd., Sedona, AZ 86336; (928) 282-6907.



Slide Rock State Park

Named for the **natural water slide** in Oak Creek Canyon, Slide Rock State Park is a refreshing way to enjoy summer in Arizona. Grab your swimsuit and cool off in the invigorating waters of the creek. Originally the Pendley Homestead, the park has a 43-acre historical **apple farm** where visitors still enjoy ripe fruit in the fall. Pets are not allowed May through September. The park is open daily, except for Christmas Day, but hours change seasonally. Check AZStateParks.com before your visit. The park is located at 6871 N. Highway 89A, Sedona, AZ 86336; (928) 282-3034.



Rockin' River Ranch State Park

This 209-acre park is located south of Camp Verde along the picturesque Verde River. Rockin' River Ranch is an extremely rare find in Arizona, with over a mile of frontage on the Verde River. This ideal location is just over an hour from north Phoenix and Scottsdale and 30 minutes from the red rocks of Sedona. The park has nearly four miles of hiking trails, picnic areas, fantastic bird watching, and access to the Verde River for kayaking and fishing. The park also offers watchable wildlife in a serene, natural location. The park is located at 4513 S. Salt Mine Road, Camp Verde, AZ 86322; (928) 284-7912.

WHERE THE GREAT OUTDOORS MEETS THE GREAT INDOORS!

Arizona's State Parks provide perfect destinations for family camping adventures without the need for an RV or tent. Cozy camping cabins are available at Alamo Lake, Dead Horse Ranch, Kartchner Caverns, Lake Havasu, Lost Dutchman, Lyman Lake, Patagonia Lake, and Roper Lake state parks. Reserve yours at AZStateParks.com/cabins.



SEDONA/ VERDE LOOP

	PARK	DEAD HORSE RANCH STATE PARK & VERDE RIVER GREENWAY	FORT VERDE STATE HISTORIC PARK	GRANITE MOUNTAIN HOTSPOTS MEMORIAL STATE PARK	JEROME STATE HISTORIC PARK	ROCKIN' RIVER RANCH STATE PARK	RED ROCK STATE PARK	SLIDE ROCK STATE PARK
ELEVATION (feet)		3,300	3,260	4,320	5,000	3,021	3,900	4,930
NEAREST SERVICES (miles)		1	1	2	4	8	5	7
CAMPING UNITS		123	0	0	0	0	0	0
BOAT CAMPING UNITS		0	0	0	0	0	0	0
VISITOR CENTER		•	•		•	•	•	
CAMPING RESERVATIONS		•						
BACKCOUNTRY CAMPING								
CONCESSION/GIFT SHOP		•	•		•	•	•	•
RESTROOMS		•	•	•	•	•	•	•
SHOWERS		•						
ELECTRIC HOOK-UP SITES		•						
NON-ELECTRIC SITES		•						
DUMP STATION		•						
CAMPING CABINS		•						
MUSEUM			•		•			
INTERPRETIVE EXHIBITS			•	•	•		•	•
SELF-GUIDED TOURS			•		•		•	
PICNIC AREAS / SHELTERS		•	•		•	•	•	•
GROUP-USE AREAS		•	•				•	•
SWIMMING								•
FISHING		•				•		•
BOAT RAMP		•						
HIKING TRAILS		•		•		•	•	•
BIKING TRAILS		•				•	•	
EQUESTRIAN TRAILS		•				•	•	
WILDLIFE VIEWING		•		•		•	•	•



Copper Corridor

Along the Copper Corridor, you'll find five state parks that offer everything from camping to a wildlife preserve, with plenty of stories about Arizona's past. The stunning Superstition Mountains offer hiking, camping, biking and cabins closest to the Phoenix-metro area, and you'll want to learn more about the hidden gold! The roads linking Phoenix and Tucson travel along dramatic mountain ranges and through communities ripe with history and culture. You'll see the landmark Picacho Peak long before you reach the park, and brave hikers can get to the very top for a bird's eye view of the landscape below. Stay and camp there or head further south into Tucson, where you can camp, hike, catch sight of amazing wildlife.



WHAT TO LOOK FOR IN COPPER CORRIDOR:

- | | | | |
|--------|-------------------|---------------|------------------|
| Biking | Camping | Dark Sky Park | Culture/Heritage |
| Hiking | Backpacking | Wildlife | Museum |
| Cabins | Equestrian Trails | | |



- Catalina State Park
- Lost Dutchman State Park
- McFarland State Historic Park
- Oracle State Park
- Picacho Peak State Park

Catalina State Park



Catalina State Park sits at the base of the majestic Santa Catalina Mountains, just minutes from the Tucson metropolitan area. The park is a haven for wildlife and desert plants including nearly 5,000 **saguaros**. The 5,500 acres of foothills, canyons and streams invite **camping**, **picnicking**, and **birdwatching**—more than 150 species of birds call the park home. Catalina State Park is part of the Tucson Sky Islands Important Birding Area. The park provides miles of **equestrian**, **birding**, **hiking**, and **biking trails** that wind through the park and into **Coronado National Forest**.

Park facilities include the Bobcat Amphitheater, grills, a group-use area for day or overnight use (available by reservation), and a gift shop. All restroom and shower facilities are accessible. The park also offers an equestrian center that provides a staging area with ample trailer parking for trail riders.

The park is open daily, except for Christmas Day. Please check **AZStateParks.com** before your visit. The park is located at 11570 N. Oracle Rd., Tucson, AZ 85737; **(520) 628-5798**.

Lost Dutchman State Park

Named after the fabled gold mine, Lost Dutchman State Park is located in the Sonoran Desert at the base of the Superstition Mountains, 40 miles east of Phoenix. Several trails lead from the park into the surrounding Tonto National Forest and Superstition Wilderness area. Stroll along the easy Native Plant trail or hike the more challenging Siphon Draw Trail to the top of the Flatiron, or mountain bike through the four miles of singletrack. Depending on the year's rainfall, you might be treated to a carpet of **desert wildflowers** and **cactus blooms** in spring.

The park and trails and the Visitor Center/Park Store are open daily, except for Christmas Day. Hours may change so please check **AZStateParks.com** before your visit. The park is located at 6109 N. Apache Trail, Apache Junction, AZ 85119; **(480) 982-4485**.

McFarland State Historic Park

Constructed in 1878, the courthouse at McFarland SHP is the oldest standing in Arizona, and the building is the largest adobe structure from the territorial period (1863–1912). The Courthouse is now listed on the National Register of Historic Places. This adobe brick building served as a jailhouse, a hospital, and the first Pinal County Courthouse. It also held the sheriff's office, courtroom, judge's chambers, and jail on the first floor. After the building was restored in 2009 and 2010, it was reopened as a park and visitor center for the Town of Florence.

Inside the park, be sure to visit Florence's WWII Prisoner of War Camp exhibit. This exhibit depicts the lives of the people who were stationed and imprisoned at

the camp. Photographs and artifacts from U.S. servicemen and the prisoners are also displayed. Visitors can also visit the Ernest W. McFarland exhibit; McFarland is referred to as the "Father of the G.I. Bill." He also contributed to Arizona history through an active public service career including the establishment of Arizona State Parks and Trails in 1957.

The visitor center offers free information on local and regional attractions. The gift shop sells hiking and children's books, local artwork, postcards, jewelry, and state park items. *Park hours may change. Check **AZStateParks.com** before your visit.* The park is located at the corner of Main and Ruggles Streets in Florence, AZ 85132; **(520) 868-5216**.



The National Fish and Wildlife Foundation conserves and restores our nation's wildlife and habitats. Learn more at **www.nfwf.org**



NFWF

↓ Oracle State Park

Oracle State Park, a 4,000-acre wildlife refuge and a center for environmental education, is located in the northern foothills of the Santa Catalina Mountains north of Tucson. Ranging from 3,700 to 4,600 feet in elevation, the surrounding landscape transitions from oak woodland to desert grassland, with sweeping views all around. The public can enjoy guided walks, geology tours, workshops, presentations, and Kannally Ranch House tours. The park has over 15 miles of trails, including the National Scenic Arizona Trail, for use by hikers, equestrians, and mountain bikers.

The historic **Kannally Ranch House** is a unique Mediterranean-style building listed on the National Register of Historic Places offering patio views, birdwatching, and home tours. Visit its museum with historic photos, original artwork, and unique design features. The ranch house and patios may be rented for weddings and other group gatherings, by special use permit.

Oracle State Park was also the first state park in Arizona to be designated an International Dark Skies Park. Star Parties are frequently hosted here to help visitors enjoy the night sky.

Oracle SP is a day use only park. Primitive camping can be found in Peppersauce Canyon. Call Coronado National Forest for more information **(520) 749-8700**. Tent and RV camping can be found at Catalina State Park. The American Avenue trailhead parking lot is available by advance reservations over the phone for after-hours use by stargazers. The park is located at 3820 Wildlife Drive, Oracle, AZ 85623; **(520) 896-2425**.



↑ Picacho Peak State Park

Visitors traveling along I-10 in southern Arizona can't miss the prominent 3,374-foot peak at Picacho Peak State Park. Enjoy the view as you hike the trails that wind up the peak and, often in the spring, overlook a sea of **wildflowers**. The peak's unique shape has been used as a landmark by travelers since prehistoric times. One of the first recordings was in the 1700s by the Anza Expedition as it passed through the area.

The park facilities include a visitor center with exhibits and a gift store, and 85 electric campsites. Group areas, for day and overnight use, are available by reservation. Before you hike, be prepared with enough water, proper footwear, and gloves for cable railings—trails are steep and challenging.

The park's Gold LEED-certified visitor center is open daily, except for Christmas Day. Trails are closed from sunset to sunrise. Check **AZStateParks.com** before your visit. The park is located off I-10, Exit 219, Picacho, AZ 85141; **(520) 466-3183**.

→ COPPER CORRIDOR

PARK	CATALINA STATE PARK	LOST DUTCHMAN STATE PARK	McFARLAND STATE HISTORIC PARK	ORACLE STATE PARK	PICACHO PEAK STATE PARK
ELEVATION (feet)	2,650	2,000	1,500	4,600	2,000
NEAREST SERVICES (miles)	1	5	1	1	1
CAMPING UNITS	120	135	0	0	85
BOAT CAMPING UNITS	0	0	0	0	0
VISITOR CENTER	•	•	•	•	•
CAMPING RESERVATIONS	•	•			•
BACKCOUNTRY CAMPING					
CONCESSION/GIFT SHOP	•	•	•	•	•
RESTROOMS	•	•	•	•	•
SHOWERS	•	•			•
ELECTRIC HOOK-UP SITES	•	•			•
NON-ELECTRIC SITES		•			
DUMP STATION	•	•			•
CAMPING CABINS		•			
MUSEUM			•	•	
INTERPRETIVE EXHIBITS	•	•	•	•	•
SELF-GUIDED TOURS	•	•	•	•	•
PICNIC AREAS / SHELTERS	•	•	•	•	•
GROUP-USE AREAS	•	•	•	•	•
SWIMMING					
FISHING					
BOAT RAMP					
HIKING TRAILS	•	•		•	•
BIKING TRAILS	•	•		•	
EQUESTRIAN TRAILS	•			•	
WILDLIFE VIEWING	•	•		•	•



Cultural Corridor

Traveling south of Tucson, the land gently rises, resulting in a cooler year-round climate. Explore the culture and natural wonders of the region, shaped by history and influenced by multiple cultures, from Arizona's southern vineyards to the area's sky islands (mountains rising up from the surrounding lowlands that create isolated ecosystems). You'll have the chance to explore underground as well as above-ground, camp, fish, kayak or explore. Bring your spirit of adventure and stay in a cabin overlooking the lake, or journey back in time to learn about the Wild West. Wherever you roam here, southern Arizona is a gem waiting to be discovered.



WHAT TO LOOK FOR IN CULTURAL CORRIDOR:

- | | | | |
|---------------|------------|-------------------|----------|
| Dark Sky Park | Museum | Equestrian Trails | Boating |
| Hiking | Cave Tours | Kayak | Wildlife |
| Swimming | Fishing | SUP | |



MEXICO



- Kartchner Caverns State Park
- Patagonia Lake State Park
- Sonoita Creek State Natural Area
- Roper Lake and Dankworth Pond State Parks
- Tombstone Courthouse State Historic Park
- Tubac Presidio State Historic Park

Kartchner Caverns State Park™



Experience a stunning limestone cave in southeastern Arizona that boasts world-class features. Kartchner Caverns were discovered in 1974 and are "living caves," host to a wide-variety of unique minerals and formations. Water percolates from the surface and calcite formations continue to grow, including stalactites hanging down like icicles and giant stalagmites reaching up from the ground. Tour guides will unveil this fascinating underground landscape during a memorable one-and-a-half hour tour. It is highly recommended to make reservations prior to your arrival.

A Helmet & Headlamp Tour is offered in the Big Room from mid-October to mid-April, and the Rotunda/Throne Room the rest of the year. Experience the cave as the Discoverers did in 1974, using only the light provided by the headlamp on your helmet. This special tour runs on Saturdays only. Call the park or visit AZStateParks.com for dates and times.

GRAB A BITE AT THE BAT CAVE CAFÉ!



The Bat Cave Café at Kartchner Caverns State Park is a quick, healthy alternative to fast food in a relaxing patio atmosphere surrounded by the Hummingbird Garden. The café is open daily and offers a variety of fresh baked pizzas (including Southern Arizona style with roasted green chilies), Batdogs, Batwursts, and quesadillas, along with a variety of sandwiches and salads. Beverages include prickly pear lemonade, soda, coffee and tea. For a treat, try one of the many dessert options!

The Discovery Center features museum exhibits, a large gift shop, regional displays, a theater, and educational information about the caverns and the surrounding landscape. There are also RV and tent campsites, camping cabins, shaded picnic areas, an amphitheater, and a hummingbird garden. Trails along the base of the Whetstone Mountains showcase the beauty above ground.

Please visit AZStateParks.com for current park hours and cave tour times. The park is located at 2980 Highway 90, Benson, AZ 85602; (520) 596-4100. For additional cave and park information or to make reservations, please call (877) MY-PARKS or visit AZStateParks.com/kartchner.

Patagonia Lake State Park

Tucked away in the rolling hills of southeastern Arizona, Patagonia Lake is an ideal place to find coues whitetail deer roaming the hills and great blue herons walking the shoreline. The campground overlooks a 265-acre man-made lake where anglers catch crappie, bass, bluegill, and catfish. Trout are stocked every three weeks from October to March.

The tracks of the New Mexico/Arizona railroad lie beneath the lake and remnants of the historic line may be found at the Nature Conservancy in Patagonia. Hikers can stroll along the beautiful Sonoita Creek Trail to see elegant trogon, canyon towhee, Inca dove, black vulture, and several species of hummingbirds. The Audubon Society has designated this park as an **Important Birding Area**.

The park offers a beach, a horseshoe pit, picnic tables and grills, a creek trail, boat ramps, a marina, 105 electric and water campsites, two non-electric campsites, seven cabins, and 12 non-electronic boat-in

campsites. Boat rentals are available through Patagonia Lake Marina and Boat Rental. For more information about renting canoes, rowboats, paddleboats, and pontoon boats, visit AZStateParks.com/patagonia-lake or call (520) 287-2804.

Contact the Arizona State Parks Reservation Center at (877) MY-PARKS seven days a week between 8 a.m. and 5 p.m. to make reservations for this park. You may also make reservations online at AZStateParks.com.

The park is open daily and the entrance gate is closed from 10 p.m. to 4 a.m. The park ranger station is open daily. Park quiet hours are from 9 p.m. to 8 a.m. It is common for campsites and cabins to fill to capacity; therefore, reservations are highly recommended. Park hours are subject to change. Please check AZStateParks.com before your visit. The park is located at 400 Patagonia Lake Rd., Patagonia, AZ 85624. For park information, please call (520) 287-6965.

Sonoita Creek State Natural Area

Sonoita Creek State Natural Area encompasses a major portion of the Sonoita Creek and Coal Mine Spring watersheds and helps preserve the fragile riparian area and its surrounding environment. It protects the endangered Gila topminnow and several special-status birds, as well as historical and cultural relics.

The Audubon Society has designated this area as an **Important Birding Area**. There are three private backcountry hike-in camping sites, plus 20 miles of trails are available for hiking and eight miles of trails are shared with equestrians.

Sonoita Creek State Natural Area is adjacent to Patagonia Lake State Park. The Natural Area conserves the land in its natural state, so there are no restrooms or

modern camping facilities. Use Patagonia Lake State Park as your base camp to enjoy the hiking, horseback riding, and natural surroundings of the Sonoita Creek area.

Please practice 'Leave No Trace' ethics (see the "Preservation" chapter) during your visit. The visitor center is located within Patagonia Lake State Park and is open daily. Although the natural area is always open, the visitor center is closed on Mondays. Permits for hiking, hunting or horseback riding can be obtained from the Patagonia Lake State Park visitor center or by calling (520) 287-6965. Park hours may change. Please check AZStateParks.com before your visit. The park is located at 400 Lake Patagonia Road, Patagonia, AZ 85624; (520) 287-2791.



Tombstone Courthouse State Historic Park

Experience the Old West at Tombstone Courthouse. Built in 1882, the two-story Victorian structure once housed the sheriff's office, jail, and courtrooms of Cochise County. Today, the courthouse is a **museum** filled with the glitter and guns of those who tamed the territory. Exhibits portray the history of Tombstone as a frontier silver mining boomtown. Learn about miners, cattlemen, and pioneers, and see a reproduction of the courtroom and sheriff's office. The park includes a Visitor Center / Courthouse, museum, exhibits, a gift shop, and shaded picnic areas. The park is open daily except on Christmas Day. The park is located at 223 Toughnut Street, Tombstone, AZ 85638; (520) 457-3311.

Tubac Presidio State Historic Park

Travel to Arizona's first state park to learn about the state's oldest European community, established in 1752. Visit the museum to see an archaeological exhibit of the Presidio ruins, glimpse the 1890s **Rojas House**, see **Arizona's first printing press**, and explore the **furnished 1885 schoolhouse**. Tubac Presidio serves as a trailhead for a 4.5-mile section of the **Juan Bautista de Anza National Historic Trail** that leads to Tumacacori Mission National Historical Park.

Juan Bautista de Anza II, second commander of the presidio, led two overland expeditions to the Pacific in 1774 and 1775, resulting in the founding of San Francisco. Each October, the park celebrates the Anza expedition with **Anza Days** and a re-enactment of the journey. The park is open Tuesday through Sunday and is located at One Burrue Street, Tubac, AZ 85646; (520) 398-2252.

Roper Lake State Park

Spend the day hiking, then relax at a cabin or campsite at Roper Lake State Park. Enjoy desert vegetation, an accessible **fishing** dock and stunning views of Mount Graham. Roper Lake has largemouth bass, channel catfish, crappie, bluegill, and red-ear and is stocked with rainbow trout in the fall and winter.

Boats are limited to small electric motors, making ideal conditions for paddleboards or canoes. Enjoy five miles of **trails** in the park and at nearby **Dankworth Pond State Park**, three miles south, which features picnic ramada trails to a re-created American Indian Village. Enjoy excellent **birdwatching**, especially **waterfowl**. Reservations are available for camping cabins, campsites, and day-use ramadas. All campsites are available for reservation. Call (877) MY-PARKS or reserve at **AZStateParks.com**.

Both the park and Dankworth Pond State Park are open daily year-round, except for Christmas Day, as is the park visitor center (hours vary by season). The park is located at 101 E. Roper Lake Rd., Safford, AZ 85546; (928) 428-6760.

CULTURAL CORRIDOR

	PARK	KARTCHNER CAVERNS STATE PARK	PATAGONIA LAKE STATE PARK & SONOITA CREEK	ROPER LAKE & DANKWORTH POND STATE PARKS	TOMBSTONE COURTHOUSE STATE HISTORIC PARK	TUBAC PRESIDIO STATE HISTORIC PARK
ELEVATION (feet)		4,700	3,750	3,130	4,539	3,500
NEAREST SERVICES (miles)		9	12	6	1	1
CAMPING UNITS		62	107	50	0	0
BOAT CAMPING UNITS		0	12	0	0	0
VISITOR CENTER		•	•	•	•	•
CAMPING RESERVATIONS		•	•	•		
BACKCOUNTRY CAMPING			•			
CONCESSION/GIFT SHOP		•	•	•	•	•
RESTROOMS		•	•	•	•	•
SHOWERS		•	•	•		
ELECTRIC HOOK-UP SITES		•	•	•		
NON-ELECTRIC SITES			•	•		
DUMP STATION		•	•	•		
CAMPING CABINS		•	•	•		
MUSEUM		•			•	•
INTERPRETIVE EXHIBITS		•	•		•	•
SELF-GUIDED TOURS		•	•	•	•	•
PICNIC AREAS/SHELTERS		•	•	•	•	•
GROUP-USE AREAS		•	•	•	•	•
SWIMMING			•	•		
FISHING			•	•		
BOAT RAMP			•	•		
HIKING TRAILS		•	•	•		•
BIKING TRAILS						
EQUESTRIAN TRAILS			•			•
WILDLIFE VIEWING		•	•	•		•



High Country Loop

High in Arizona's White Mountains, cool mountain lakes rest among pine forest and volcanic fields, perfect for summer camping, boating or a relaxing cabin stay. Take a road trip through the whole loop to experience the history of Flagstaff, Hopi culture, beautiful lakes with fishing and camping and ancestral Puebloans petroglyphs. The dramatic edge of the Colorado Plateau, known as the Mogollon Rim, is where you will find what is believed to be the world's largest travertine bridge. Take a trail to view the bridge from below along Pine Creek, or picnic at the top and try your luck spotting the resident deer and javelina.



WHAT TO LOOK FOR IN HIGH COUNTRY LOOP:



Boating



Fishing



Culture/
Heritage



Cabins



Camping



Museum



Swimming



Biking



Equestrian
Trails



Wildlife



Lodge



Water Skiing



- Fool Hollow Lake Recreation Area
- Homolovi State Park
- Lyman Lake State Park
- Riordan Mansion State Historic Park
- Tonto Natural Bridge State Park

Fool Hollow Lake Recreation Area

Imagine camping among pine trees beside a quiet lake watching majestic great blue herons at a cool 6,300 feet in elevation. Located in the Apache-Sitgreaves National Forest among the picturesque mountain pines of Show Low, the recreation area is a unique partnership between the U.S. Forest Service, Arizona State Parks and Trails, Arizona Game and Fish and the City of Show Low. The recreation area is an ideal place for camping, fishing, picnicking, boating, and wildlife viewing. Boat horsepower is limited here, so come prepared for quiet and relaxation. Camping reservations are recommended during peak season (May



through September). Canoe and kayak rentals are available mid-May to mid-September.

The tiny town of Adair has long since been covered by the lake, but it was Thomas Jefferson Adair who was responsible for the name Fool Hollow. In 1885, Adair moved into the area with the intention of farming. The locals joked that only a fool would try and farm the place. The name stuck! The recreation area is open daily. Park hours may change. Please check **AZStateParks.com** before your visit. The park is located at 1500 N. Fool Hollow Rd., Show Low, AZ 85901; (928) 537-3680.

Homolovi State Park

In the high grassland of 14th-century northern Arizona, an ancient people found a home along the Little Colorado River. These people, the *Hisat'sinom*, paused in their migrations to till the rich flood plain and sandy slopes before continuing north to join people already living on the mesas; people who are today known as the Hopi. The park serves as a center of research for the late migration period of the Hopi from the 1200s to the late 1300s. While archaeologists study the sites—the park has two main pueblo ruins—and confer with the Hopi to document the history of Homolovi, visitors can explore the sites, a visitor center, museum, bookstore, trails, and a campground.

Covered picnic tables are located throughout the park and pullouts provide opportunities to observe wildlife.

The Hopi people of today still consider Homolovi, as well as other sites in the southwest, to be part of their homeland. They continue to make pilgrimages to these sites, renewing the ties of the people with the land.

Park hours may change. Please check **AZStateParks.com** before your visit. The park is located off of I-40, Exit 257. Head north on Highway 87 for 1.5 miles to the park in Winslow, AZ 86047; (928) 289-4106.

Lyman Lake State Park

Created as an irrigation reservoir by damming the Little Colorado River, Lyman Lake State Park in northeastern Arizona is home to great fishing, camping, hiking, and some of the smoothest water skiing in the state. This large lake is one of the few bodies of water in Arizona with **no size restrictions on boat motors**. The west end of the lake is buoyed off and restricted as a no wake area, allowing anglers a chance at a variety of fish without the disturbance. The fishery consists of walleye, channel catfish and largemouth bass.

Camping cabins overlooking the lake, beach camping and a group camping area are available. Stop by Lyman Lake General Store to pick up camping and fishing supplies, including ice, firewood, fishing licenses and food. Visit **AZStateParks.com** for updates.

The park is open daily, except on Christmas Day. Park hours may change. Check **AZStateParks.com** before your visit. The park is located 12 miles south of St. Johns on U.S. Highway 191/180, St. Johns, AZ 85936; (928) 337-4441.



Tonto Natural Bridge State Park



Tucked away in a tiny valley surrounded by a forest of pine trees, this natural bridge has been in the making for thousands of years and is believed to be the largest natural travertine bridge in the world. The bridge stands 183 feet high over a 400-foot long tunnel that measures 150 feet at its widest point.

Visitors can stand on top of the bridge or hike down below to appreciate the true size and beauty of this geologic wonder. The nearby 300-foot Waterfall Trail ends at a waterfall cave where visitors marvel at the water-loving mosses and flowers in the high desert.

Pets are restricted from all trails but allowed on the paved path and viewpoints.

Historic Goodfellow Lodge is currently closed for overnight stays. This unique rustic hide-away was built in the 1920s and features 10 bedrooms and a furnished basement suite.

The park is open daily, year-round except on December 25. Park hours may change. Check AZStateParks.com before your visit. The park is located 10 miles north of Payson off Arizona Highway 87/260, Payson, AZ 85547; (928) 476-4202.

Riordan Mansion State Historic Park

The duplex style Riordan Mansion is one of the finest examples of American Arts and Crafts style architecture open today. Designed by Charles Whittlesey, the architect of the El Tovar Hotel at the Grand Canyon, the mansion was built in 1904 with hot and cold running water, central heat, and electric lights; reflecting the most modern technology and design of the time.

Go back in time as you tour the expansive home and imagine early 20th-century living. The Riordan family moved to Flagstaff in the

1880s as managers and then owners of the Arizona Lumber and Timber Company.

The interior of the mansion is available for guided tours only, and showcases all original family belongings, including fine examples of early Stickley furniture. Interior tours are conducted on the hour; reservations are recommended. Park hours may change. Please check AZStateParks.com before your visit. The park is located at 409 W. Riordan Road, Flagstaff, AZ 86001; (928) 779-4395.

HIGH COUNTRY LOOP

PARK	FOOL HOLLOW LAKE RECREATION AREA	HOMOLOVI STATE PARK	LYMAN LAKE STATE PARK	RIORDAN MANSION STATE HISTORIC PARK	TONTO NATURAL BRIDGE STATE PARK
ELEVATION (feet)	6,300	4,900	6,000	6,900	4,530
NEAREST SERVICES (miles)	2	2	12	1	8
CAMPING UNITS	111	53	56	0	0
BOAT CAMPING UNITS	0	0	0	0	0
VISITOR CENTER	•	•	•	•	•
CAMPING RESERVATIONS	•	•	•		
BACKCOUNTRY CAMPING					
CONCESSION/GIFT SHOP	•	•	•	•	•
RESTROOMS	•	•	•	•	•
SHOWERS	•	•	•		
ELECTRIC HOOK-UP SITES	•	•	•		
NON-ELECTRIC SITES	•	•	•		
DUMP STATION	•	•	•		
CAMPING CABINS			•		
MUSEUM		•		•	•
INTERPRETIVE EXHIBITS	•	•	•	•	•
SELF-GUIDED TOURS	•	•	•	•	•
PICNIC AREAS/SHELTERS	•	•	•	•	•
GROUP-USE AREAS	•		•	•	•
SWIMMING	•		•		•
FISHING	•		•		
BOAT RAMP	•		•		
HIKING TRAILS	•	•	•		•
BIKING TRAILS	•				
EQUESTRIAN TRAILS					
WILDLIFE VIEWING	•	•	•	•	•

Just For Kids



Hey kids! If you're between ages 6-12, you can become a Junior Ranger at any of Arizona's state parks! Learn more about each park you visit, then pledge to do your part to help preserve the beauty of the parks for everyone to enjoy!

When you visit the park, ask for a full Junior Ranger booklet at the Visitor Center, Ranger Station, or office. Complete the activities during your visit and then bring it to a Park Ranger for review. When a Park Ranger approves your work, you'll be asked to take the Junior Ranger Pledge and get sworn in as our newest Junior Ranger. You'll also be given a Junior Ranger Button.

For younger kids, we offer the Junior Buddy Program. Explore the world around you with Rocky Ringtail as you learn about the environment through games and puzzles! The Junior Buddy booklet gives parents fun things to do with kids age 3-5 with coloring pages and exploration that is fun for all ages!

Junior Ranger and Junior Buddy information and activities are also available at AZStateParks.com/Kids!

There are more than 30 state parks across Arizona, and we hope you'll visit each one and learn about what makes them each so special. While you're visiting to collect your Junior Ranger buttons, your whole family can camp, hike, fish, or explore.

WE HOPE TO SEE YOU IN THE PARK!



GEAR UP & GET OUT!

Arizona State Parks and Trails offer something for everyone and they're best enjoyed with friends and family. They're even better when you are prepared for the state's diverse geography and climate. Here are a few of the American Park Network editors' favorite things to bring when they visit.



The **BioLite AlpenGlow 500** serves double duty on your next adventure. Its 500-lumen output will illuminate your campsites, while the warm white and candle-flicker modes create a cozy ambiance. The lantern's multicolor settings will make your trip more lit-figuratively and literally. What really shines is its 6,400 mAh rechargeable battery, which can charge your devices via through its integrated USB out. Compact, water-resistant, and durable, it is versatile and fun solution to keep your campsite bright. www.biolite.com

Protect your head from both impact and the heat with the **Smith Forefront 3**. Its 20 enlarged vents and AirEvac™ system enhance airflow by 25% and an integrated, adjustable visor shields the sun, keeping you cool on scorching roads and trails. MIPS® Air Node and full Koroyd® coverage provide unparalleled impact protection and a BOA® Fit System ensures a snug, custom fit. Integrated eyewear storage round out this desert-ready helmet. www.smithoptics.com



The **Huk A1A Performance Hoodie** checks all the outdoor boxes whether you are hiking, fishing or just hanging out. It offers UPF 50+ sun protection, keeping your skin shielded and comfortable. Mesh panels under the arms and back enhance breathability, and its quick-dry, moisture-wicking fabric promises comfort in the heat, even if you are wearing a pack. Lightweight and flexible, it allows for unrestricted movement, making it ideal for active adventures on land and on the water. www.huk.com

The **Redwing Traveler 50** is your go-to pack whether you are a weekend warrior or taking an extended walkabout. With 50 liters of space, it swallows up gear for hiking, fishing, and unplanned detours. A ventilated back panel keeps things cool and its U-zip gives you easy top panel access. Digital nomads will love its hydration-compatible sleeve which doubles as a lap-top compartment. Most important, it distributes weight so well, you'll forget you are wearing it. www.kelty.com



Trying to add Arizona's 576 avian species to your life list? **Nikon Prostaff P7 10x42** binoculars deliver crisp, high-contrast views with a wide field of view—ideal for tracking fast-moving desert species like the Gila woodpecker or vermilion flycatcher. Lightweight, waterproof, and fog-proof, they perform reliably in Arizona's diverse conditions. Expect smooth focus and comfortable grip, whether you're scanning high desert or riparian corridors without breaking the bank. www.nikonusa.com

The **Igloo Trailmate 70 quart cooler** is the ultimate sidekick for your next family trip. With chunky wheels that tackle sand and rocky trails, it's built for the wild. It keeps drinks cold and watermelon slices crisp—even under Arizona's blazing desert sun. Cup holders? Bottle opener? Secret snack stash? Yep, it's got all that. Big enough for your entire crew but a piece of cake to transport, this cooler will make every picnic, hike, and camping trip more memorable. www.igloo.com



Roadtrip Ideas



THESE ROAD TRIPS TAKE YOU EXACTLY WHERE YOU NEED TO GO!
CHOOSE YOUR OWN ROAD TRIP ADVENTURE WITH ARIZONA
STATE PARKS AND TRAILS!

Want to travel at your own pace? Arizona is the perfect place to hit the road and explore, for a day, a week, or a weekend. You can make your stay-cation a park-cation by exploring the state parks everything they have to offer. We've even planned out road trip itineraries for you. All you have to do is pack the car and head out. Visit AZStateParks.com/Roadtrips to learn more!

HEADING NORTH?

Northern Arizona has a great park to cool off and set up camp, then make day trips to the surrounding areas. With several Arizona State Parks to visit, you can plan an exciting tour of Cottonwood, Sedona, and Jerome, or experience the astounding beauty of the White Mountains. It's up to you!

SOUTHERN CHARM

Southern Arizona is full of exciting outdoor recreation surrounded by a gorgeous Sonoran Desert backdrop. Parks in the south are perfect year-round for an amazing Arizona Road Trip! There are eight southern Arizona parks that make the ultimate road trip experience, and will

leave you armed with memories that are sure to last a lifetime!

VISIT ARIZONA'S WEST COAST

When you're looking for an iconic adventure on a road trip, Arizona's western border serves up amazing exploration possibilities along the Colorado River! Four amazing parks are all within an hour of each other right on the river and offer water fun, hiking, and a chance to relax and enjoy the river life. Engage in adrenaline-inducing water sports or simply watch your cares roll downstream! However you decide to experience this must see section of Arizona, we can show you a good time.

ARIZONA'S HISTORY

Learn even more about Arizona's varied history by touring the eight historic state parks throughout the state. Each of these parks explores a unique part of Arizona's story, weaving together to create the intricate history we've all grown to know. Hit the road and check out our fascinating, well-curated displays throughout this history-rich state!



SHARE YOUR FAVORITE PHOTOS WITH US!

FOLLOW US
@OhRanger



PROTECTING ACCESS. PROMOTING RESPONSIBILITY. PRESERVING THE OUTDOORS.

The Yamaha Outdoor Access Initiative champions responsible recreation by funding sustainable access, safety education, and trail stewardship projects across America's public lands.

\$6M+
CONTRIBUTED

470+
PROJECTS



EXPANDING AND
PROTECTING OHV
ACCESS NATIONWIDE



**APPLY
TODAY**



**OUTDOOR
ACCESS
INITIATIVE**

Visit YamahaOAI.com and see if your project qualifies for funding!



Satellite

with Starlink

**Stay connected.
Even here.**

T-Satellite is the only mobile + satellite network that connects automatically.

Developing technology available in most areas, most of the time; ultimately available in most outdoor areas where you can see the sky. See T-Mobile.com for details.

Sign up now

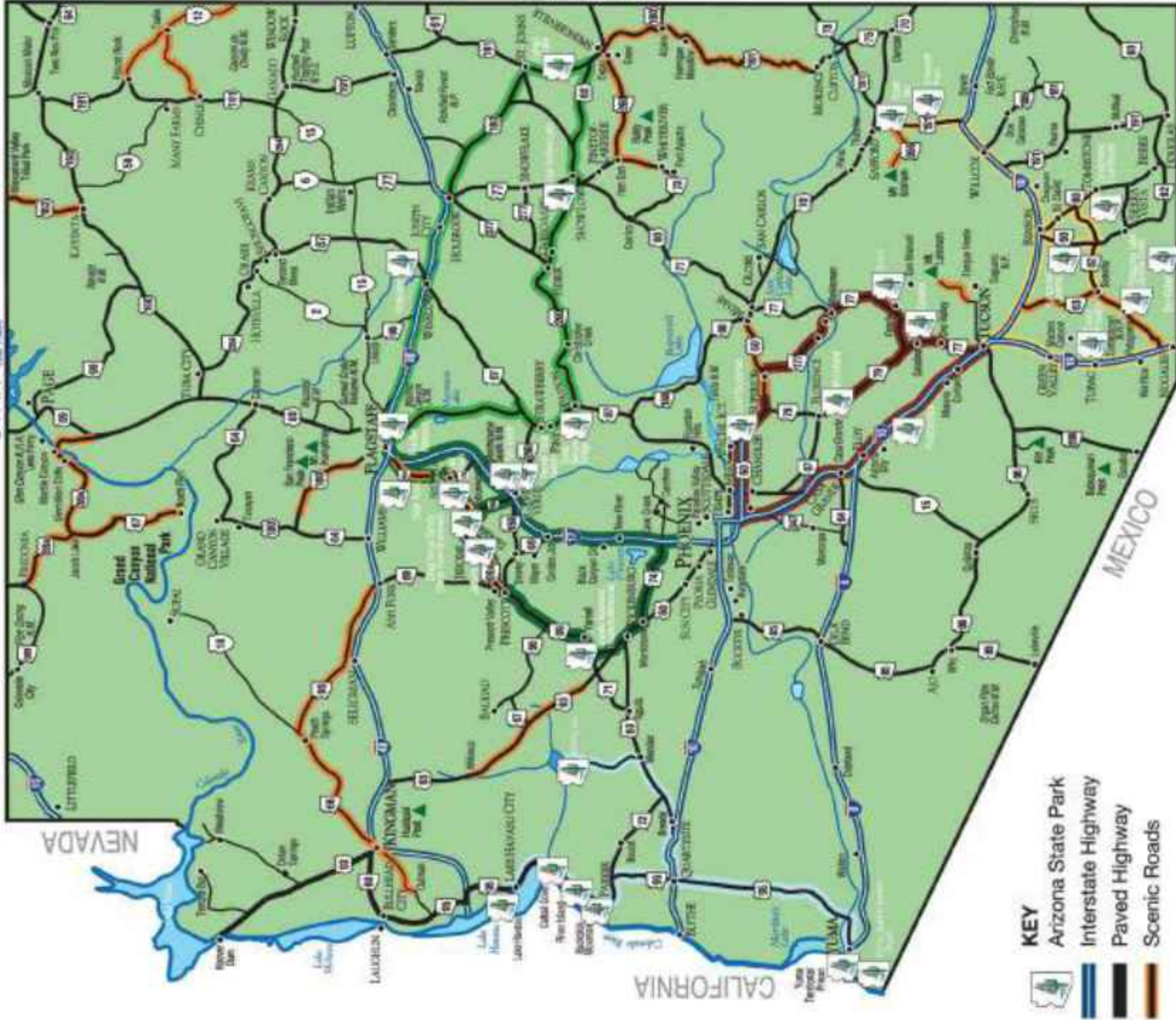




ARIZONA

STATE PARKS & TRAILS

UTAH Lake Powell



- KEY**
- Arizona State Park
 - Interstate Highway
 - Paved Highway
 - Scenic Roads



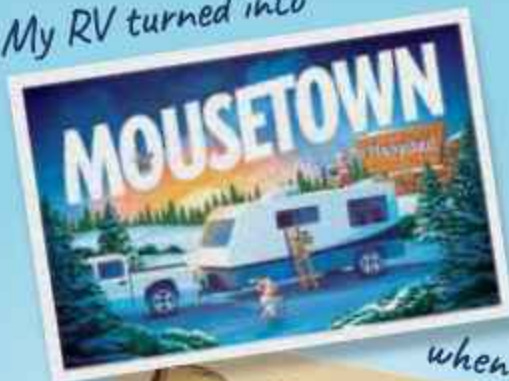
Map not to scale

AZStateParks.com

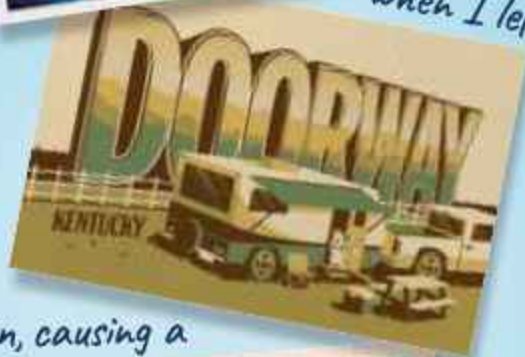
ARIZONA STATE PARKS MILEAGE CHART

Parks	Phoenix	Tucson	Flagstaff	Parks	Phoenix	Tucson	Flagstaff
Alamo Lake	136	275	244	McFarland	64	78	210
Buckskin Mountain	147	287	234	Oracle	118	36	275
Catalina	110	16	258	Patagonia Lake	175	82	336
Cattail Cove	151	301	223	Picacho Peak	68	40	219
Colorado River	186	239	322	Red Rock	117	231	38
Dankworth Pond	173	124	306	Riordan Mansion	143	257	1
Dead Horse Ranch	104	218	70	River Island	167	278	231
Fool Hollow Lake	176	189	140	Rockin' River Ranch	95.2	207	63
Fort Verde	90	204	57	Roper Lake	173	124	306
Granite Mountain	90	204	131	Slide Rock	115	236	23
Homolovi	201	329	72	Sonoita Creek	188	77	331
Jerome	111	225	76	Tombstone Courthouse	185	71	328
Kartchner Caverns	161	50	309	Tonto Natural Bridge	105	201	106
Lake Havasu	202	317	206	Tubac Presidio	158	45	301
Lost Dutchman	42	137	182	Yuma Territorial Prison	185	238	321
Lyman Lake	221	246	158				

My RV turned into



when I left the



open, causing a



Good thing we're protected by Progressive, a leader in RV insurance with over 1 million RVs insured.

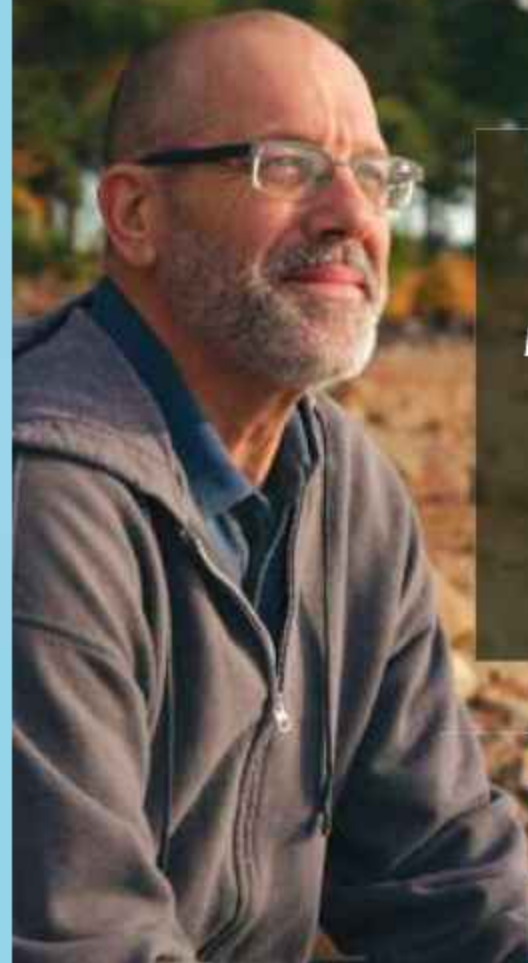
1-800-PROGRESSIVE / PROGRESSIVE.COM

PROGRESSIVE

Quote RV insurance in as little as 4 minutes



Prevagen® For Your Brain®



"I've told my co-workers and family, since taking Prevagen, how much of a difference its made in my life. I feel really good."

Todd
Real Prevagen User
Compensated for their time

THE OFFICIAL BRAIN SUPPLEMENT OF THE GREAT OUTDOORS
www.Prevagen.com

*These statements have not been evaluated by the Food and Drug Administration. This product is not intended to diagnose, treat, cure, or prevent any disease.



Prevagen® Great Outdoors Sweepstakes

ENTER NOW!

Enter for Your Chance to WIN a Digital Action Camera Kit and a One Year Supply of Prevagen® Professional Formula!

- ✓ One Year Supply (12 bottles) of 30 ct. Prevagen Professional Formula (\$1,079 ARV)
- ✓ One (1) Digital Camera & Cinema Lens (\$504 ARV)
- ✓ One (1) Extension Pole + Shutter Remote (\$71 ARV)
- ✓ One (1) Camera Chest Mount (\$35 ARV)
- ✓ One (1) Camera Modification Case (\$79 ARV)
- ✓ One (1) Front Facing Camera Screen (\$71 ARV)
- ✓ One (1) Camera Accessory Bundle (\$127 ARV)

\$1,966 Total Approximate Retail Value



Fill out your entry today by visiting:
Prevagen.com/go-sweepstakes

NO PURCHASE NECESSARY TO ENTER OR WIN. Odds of winning will depend upon the total number of eligible entries received. Limit 1 entry per person. Promotion begins on 6/15/2025 and ends 5/01/2026. Winner will be selected on or about 5/02/2026. Open to US/DC residents 18 years and older at the time of entry. Void where prohibited by law. Sponsored by Quincy Bioscience. See Full Official Rules at www.prevagen.com/go-sweepstakes-rules.

*These statements have not been evaluated by the Food and Drug Administration. This product is not intended to diagnose, treat, cure, or prevent any disease.



Prevagen®
For Your Brain®