

Oh, Ranger!®

COMPLIMENTARY ~~\$2.95~~

2017/2018

YOUR COMPLETE GUIDE TO THE PARKS

ILLINOIS STATE PARKS

ACTIVITIES • SIGHTSEEING • DINING • LODGING
TRAILS • HISTORY • MAPS • MORE



OFFICIAL
PARTNERS



JOURNEY *Further*

This summer, Yamaha launches a new Star motorcycle designed to help you journey further...than you ever thought possible.

To see the road ahead, visit

YamahaMotorsports.com/Journey-Further



Some motorcycles shown with custom parts, accessories, paint and bodywork. Dress properly for your ride with a helmet, eye protection, long sleeves, long pants, gloves and boots. Yamaha and the Motorcycle Safety Foundation encourage you to ride safely and respect the environment. For further information regarding the MSF course, please call 1-800-446-9227. Do not drink and ride. It is illegal and dangerous. ©2017 Yamaha Motor Corporation, U.S.A. All rights reserved.





WELCOME



Welcome to Illinois! Thanks for picking up a copy of the Illinois State Parks guide to better plan your visit to our remarkable state parks.

Illinois has an amazing array of state parks, fish and wildlife areas, and conservation and recreation areas, with an even broader selection of natural features and outdoor recreation opportunities.

From the Lake Michigan shore at Illinois Beach to the canyons and waterfalls at Starved Rock; from the vistas above the mighty river at Mississippi Palisades to the hill prairies of Jim Edgar Panther Creek; all the way to the sandstone walls of Giant City and the backwater swamps along the Cache River—Illinois has

some of the most unique landscapes in America. And they're all here for state park visitors to take advantage of.

Recreation opportunities are limitless in Illinois. Anglers delight in lakes, rivers and streams at our parks and downstate reservoirs. Campers can go online to reserve a full-service campsite at dozens of locations, stay in a state park campground cabin, or pitch a tent in primitive campground seclusion. State park lodges offer great accommodations, terrific food and breathtaking settings.

There are bicycle paths, mountain bike trails, hiking trails and horseback trails to explore. Remember to download the Prairie State Hike app on your smartphone and take a guided hike at a number of our parks—right from the palm of your hand. Check out hunting season opportunities, which make our parks destinations for visitors from throughout the state and across the country.

This guide to Illinois State Parks, produced in partnership with American Park Network, is provided by the Illinois Department of Natural Resources, intended to enhance your enjoyment of all that outdoor Illinois has to offer. It is made possible by the support of sponsors whose messages appear inside.

I hope you'll plan a day trip to a state park; a weekend away at a state park campground or lodge; or a hike in a state forest. Discover even more about our Illinois State Parks and what they have to offer at dnr.illinois.gov. For campsite reservations, visit reserveamerica.com.

Enjoy your visit to the outdoors in Illinois—and come back often.

Sincerely,

Wayne A. Rosenthal, Director
Illinois Department of Natural Resources



Energizing
adventure in
partnership with
the National Parks
Conservation
Association.



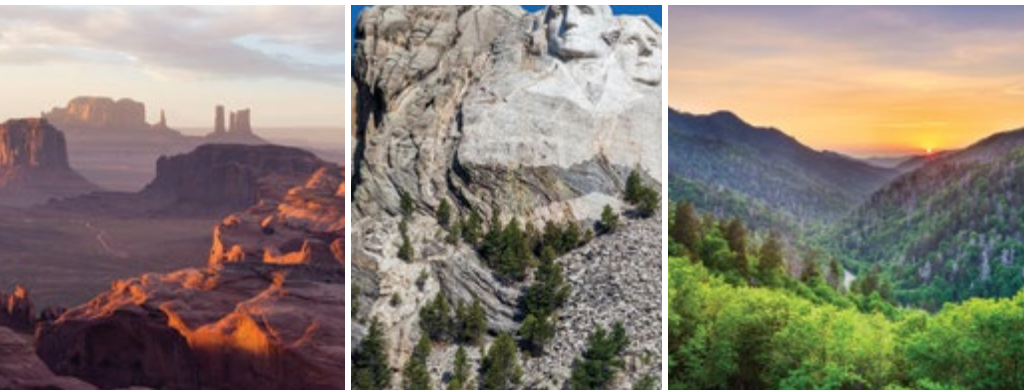
GO AND CONQUER
SAVE 20%
PLUS EARN 1,000 WYNDHAM REWARDS
BONUS POINTS WHEN YOU BOOK 2 NIGHTS*
AT TRAVELODGE.COM/GO

Travelodge

The difference between a trip and an adventure?
The can-do, can-conquer attitude that can only come from a good night's sleep.

Stay Close to Adventure.® **Travelodge** and Go.

*Subject to availability at participating hotels. Wyndham Rewards members only. Book online by September 4, 2017 & complete the 2 night minimum stay by September 10, 2017. Sunday–Thursday arrivals only. Offer subject to change/cancellation at any time, as well as full terms at www.travelodge.com/go. Void where prohibited.



Savings can take you to *amazing* sights.



GEICO® *for your RV*

geico.com | 1-877-434-2678 | Local Office

Some discounts, coverages, payment plans and features are not available in all states or all GEICO companies. GEICO is a registered service mark of Government Employees Insurance Company, Washington, D.C. 20076; a Berkshire Hathaway Inc. subsidiary. © 2017 GEICO



CONTENTS



American Park Network® publishes OhRanger.com, Oh, Ranger! ParkFinder™ and Oh, Ranger!® guides — a collection of visitor guides for public lands all across America. American Park Network is an official partner of the National Forest Foundation, National Parks Conservation Association, National Fish and Wildlife Foundation, American Hiking Society and the Student Conservation Association.

Publisher & Editor-in-Chief
MARK J. SAFERSTEIN

Associate Publisher & Executive Editor
Joel S. Saferstein

Group Sales & Partnerships Director
Alex Frenkel

EDITORIAL / PRODUCTION
Managing Editor: Kate Morgan
Editors: Nell Alk, Monette A. Bailey,
Scott Deckman, Cinnamon Janzer, Julie McCool,
Renee Sklarew, Andy M. Smith
Proofreader: Shannon Kronstadt
Graphic Designers: Mario Arce, Dennisse Cruz,
Mike Dion, Yamileth Recinos, Tatiana Hurtado
DIGITAL
Technology Managers: Scott Falconer, Josh Eckstein

ADVERTISING SALES & MARKETING
(212) 581-3380
adsales@americanparknetwork.com
Business Development: Sharon Burson,
Randy Burton, Mary Pat Kaleth, Pat Keane,
Craig King, Kristi Rummel
Operations Manager: Matthew Price

American Park Network
41 East 11th Street, 11th Floor, NY, NY 10003

@OhRanger

©2017 APN MEDIA, LLC - All Rights Reserved

Oh, Ranger! and American Park Network are registered trademarks of APN Media, LLC.



	Welcome	2
	What's New!	6
	Plan Your Visit	8
	Important Numbers	10
	Lodging & Dining	12
	Things To Do	15
	East-Central Illinois	22
	Northwest Illinois	26
	Northeast Illinois	34
	Centerfold Map	
	South Illinois	39
	West-Central Illinois	46
	Illinois State Museum	51
	Preservation	52
	Photography	54
	If You Only Have A Day	56

Special thanks to Michelle Silver and everyone at the Illinois Department of Natural Resources for their invaluable assistance.

(Cover: Monarch Butterfly on Anise Hyssop Blossom by Willowpix/iStock.)

FOR MORE INFORMATION

Distribution requests
distribution@americanparknetwork.com

Oh, Ranger! Wi-Fi™ installation/sponsorship
wifi@americanparknetwork.com



Oh, Ranger!®
GET THE APP!
IT'S FREE! DOWNLOAD NOW





WHAT'S NEW! WHY PARKS MATTER

“There is nothing so American as
our national parks.”

— Franklin Delano Roosevelt

Access to parks is one of the things that's truly great about life in America. Not just national parks, like FDR stated, but *all* parks. Parks afford everyone, regardless of race, income, social status or age, the opportunity to escape the concrete jungle and step into the wild. It doesn't matter whether it's a small step into a local park or a giant leap into the backcountry. The effect is the same. Time in nature feels good. Other values that parks bring may be less obvious. Since we take care of the things we value, I'd like to highlight a few other benefits we all receive from public lands:

Economic Impact America's federal, state and local parks and public lands generate \$200 *billion* in annual economic activity and support more than one million jobs! You might help a dozen businesses during a weekend hiking trip. Imagine the impact of a week-long national park adventure. Parks raise property values, too!

Conservation Trees produce the oxygen we need to survive, but did you know that they also help save money? It's estimated that trees in cities save \$400 *billion* in costs to retain stormwater. A single tree can store 100 gallons or more, which helps keep streets from flooding and reduces the need for artificial storage facilities. A tree can also absorb as much as three tons of carbon gas during its lifetime.



Mark, Joel & Alex — Support parks, stay healthy!

Take a deep breath in a park and you'll immediately know the value of greenspace.

Health & Wellness Studies show a high correlation between time spent in parks and improved health (and, in my view, happiness). You move more when you're outside, which decreases stress, makes you more fit and reduces the risk of many health issues, such as diabetes, high blood pressure and heart disease. Exercise (which parks inspire) also positively impacts your cholesterol levels. A few years ago, I started bicycling to work every day. A year later, my overall cholesterol went down while my HDL—the “good” cholesterol—went up. The results of a small change in your exercise routine can be amazing! Parks invite this change.

The value of parks is undeniable, so follow FDR's lead and support our public lands. It's the all-American thing to do. (Congress, take note!) You'll save the country money while improving our nation's health—and your own, too. Not a bad combination!

Mark H. Alexander
mark@americanparknetwork.com



GET CONNECTED AT YOUR FAVORITE PARKS!

Parks are about enjoying nature, but what if you want to share a great picture or are awaiting an important email? If you're looking to add connectivity to your park, or if you already have Wi-Fi and would like help adding content or generating sponsor revenues, please let us know at wifi@americanparknetwork.com.



Take The ROAD TO MIGHTY



Five national parks
One iconic American road trip
VisitUtah.com/itineraries

LIFE
UTAH
ELEVATED



PLAN YOUR VISIT

Thanks for picking up this guide, and welcome to the Land of Lincoln! The **Illinois Department of Natural Resources (IDNR)** manages 309 state parks and recreational sites on more than 475,000 acres of land. The Illinois State Museum system—with four public facilities statewide showcasing Illinois art and natural history—is part of the IDNR. Each park offers its own variety of activities and scenery. To learn more, please visit dnr.illinois.gov.

PLANNING YOUR TRIP

This guide divides the state into five regions: Northwest, Northeast, East-Central, West-Central and South. You will find general information for all the regions in the first part of this guide. Each section features a map as well as a chart with detailed information about each park.

GENERAL INFORMATION

Most IDNR sites are open year-round and closed only on Christmas Day and New Year's Day. Some smaller sites are closed seasonally. Visitors may want to call before visiting parks. Statewide attractions, sponsored by the IDNR and other agencies, are identified along the highways by brown-colored signs.

HIGHWAY TOURIST INFORMATION CENTERS

As you travel the state, stop at an Illinois highway welcome center for information and brochures. Plan which parks you would like to visit. Please see the centerfold map for locations.

SPECIAL SERVICES ♣

Park activities and facilities accessible to visitors with disabilities are indicated throughout this guide by the ♣ symbol. In accordance with the **Americans with Disabilities Act (ADA)**, the IDNR is working to expand the number of activities for visitors with disabilities in various recreational areas. For information about special services, please call (618) 435-8138, ext. 130. For hearing-impaired callers, the IDNR can also receive calls from a TTY: please call the text telewriter at (217) 782-9175.

CAMPING

Select state parks and recreational areas offer advance reservations. IDNR and Reserve America have joined together to bring camping, cabin, group camp and shelter reservations to the web. To reserve a site, visit reserveamerica.com. To locate a campground, simply click "Find an Adventure," select the state of Illinois and choose the type of site you're interested in.

Reservations for campsites can only be made online. Reservations for regular campsites and group campsites require a \$5 non-refundable reservation fee and payment of the full camping and utility fees when the reservation is made. Shelter reservation fees are \$25. Campsites can be reserved for a maximum of 14 nights over a 30-day period and reservations must be made five to seven days before the campsite is needed. Reservations for holiday weekends may require a two- or three-night minimum stay reservation. Some facilities also require a three-night minimum stay for Columbus Day.



Pre-Collision¹ with Pedestrian Detection² standard.

The 2017
PRIUS

Pedestrians can come out of nowhere. So Pre-Collision with Pedestrian Detection can help spot them and brake for you. It's just one of the standard Toyota Safety Sense™ P (TSS-P)³ features that give you more peace of mind.

Options shown. Dramatization. 1. The TSS Pre-Collision System is designed to help avoid or reduce the crash speed and damage in certain frontal collisions only. It is not a substitute for safe and attentive driving. System effectiveness is dependent on road, weather and vehicle conditions. See Owner's Manual for additional limitations and details. 2. The Pedestrian Detection system is designed to detect a pedestrian ahead of the vehicle, determine if impact is imminent and help reduce impact speed. It is not a substitute for safe and attentive driving. System effectiveness depends on many factors, such as speed, size and position of pedestrians, and weather, light and road conditions. See Owner's Manual for additional limitations and details. 3. Drivers are responsible for their own safe driving. Always pay attention to your surroundings and drive safely. Depending on the conditions of roads, weather and the vehicle, the system(s) may not work as intended. See Owner's Manual for additional limitations and details. ©2017 Toyota Motor Sales, U.S.A., Inc.

PARK REGULATIONS

ALCOHOL RESTRICTIONS

Several parks have complete or partial alcohol bans. Call ahead for information.

ARTIFACTS

Report any prehistoric or historic artifacts you find. Removal of resources, including fossils, is strictly prohibited.



IMPORTANT NUMBERS

ILLINOIS DEPARTMENT OF NATURAL RESOURCES

General Information

Springfield	(217) 782-6302
All DNR Information for the Hearing-Impaired	(217) 782-9175 (TTY)
Chicago Area	(312) 814-2070

Website	dnr.illinois.gov
---------	--

Special Events/State Fairs	(217) 524-5861
----------------------------	----------------

DNR Direct (Automated License System)	(888) 6PERMIT (673-7648)
---------------------------------------	--------------------------

Boat/Snowmobile Registration	(217) 557-0180 or (800) 382-1696
------------------------------	----------------------------------

Deer/Turkey/Dove/Pheasant/Goose/Duck Permit	(217) 782-7305
---	----------------

Fishing/Hunting License	(888) 6PERMIT (673-7648)
-------------------------	--------------------------

Environmental/Sporting Series License Plate Information	(800) 252-8980 (Illinois only)
---	--------------------------------

Safety Courses	(800) 832-2599 (Illinois only)
Hunting/Boating/Snowmobiling/Trapping	(217) 557-9206 (Out of state)

Educational Services	(217) 524-4126
----------------------	----------------

Illinois State Museum	(217) 782-7386
-----------------------	----------------

OTHER IMPORTANT NUMBERS

Acres for Wildlife	(217) 782-6384
--------------------	----------------

IDNR Internships	(217) 782-1274
------------------	----------------

Illinois Historic Preservation Agency	(217) 782-4836
---------------------------------------	----------------

Illinois Sportsmen Against Hunger Program	(217) 785-5091
---	----------------

Illinois Tourist Information	(800) 2CONNECT (226-6632)
------------------------------	---------------------------

Poacher Hotline	(877) 2DNRLAW (236-7529)
-----------------	--------------------------

Publications Request	(217) 782-7498
----------------------	----------------

Road Conditions (Recording)	(800) 452-4368
-----------------------------	----------------

Volunteer Network	(217) 785-5091
-------------------	----------------

World Shooting & Recreational Complex	(618) 295-2700
---------------------------------------	----------------

BOATING

Your boat must be registered and titled prior to use. Call (217) 557-0180 or (800) 382-1696 for more information.

FIRES

Never build campfires on dry and windy days or leave them unattended. Only use designated fire rings or a camp stove so fires can't spread. Transporting firewood from outside parks into them is strictly regulated.

FISHING & HUNTING

Regulation digests are available wherever fishing and hunting licenses are sold, or by calling the IDNR clearinghouse at (217) 782-7498. Hunting and fishing licenses are available at dnr.illinois.gov. Please see the "Things To Do" chapter for more information.

HIKING

Stay on designated trails. Going off-path harms vegetation and causes erosion, requiring additional maintenance.

LITTER

Properly dispose of any litter and use recycling bins where available.

PETS

For the safety of your pet, and for wildlife, always keep your pet leashed. Always dispose of pet waste properly.

SNOWMOBILING

Your machine must be registered and insured. Please call (217) 557-0180 or (866) 867-3542 for more information.



ECLIPSE

On August 21, 2017, millions of Americans will witness one of nature's most incredible spectacles: a total eclipse of the sun.

An eclipse occurs when the orbit of the moon passes directly between the sun and the earth, blocking the sun completely and turning daylight to instant twilight.

Viewing this rare celestial event will be even neater if you're watching from one of the National Parks, State Parks or National Forests in the "path of totality," stretching from the Pacific Ocean to the Atlantic Ocean. Nearly every U.S. resident lives within a day's drive of its path.

It's important to take precautions prior to the eclipse. Special glasses are required to prevent damage to your eyes.

To learn more about how you can best enjoy the eclipse in Illinois, visit

solarseven/stock



www.dnr.illinois.gov/recreation/Pages/TotalSolarEclipse.aspx. For information about the eclipse, online telescopes and an eclipse livestream, check out www.slooh.com.



LODGING & DINING

Whether you are coming to Illinois for a week-long vacation, a weekend getaway or a day trip, you can enjoy comfortable accommodations and fine dining at seven Illinois state park locations. The Civilian Conservation Corps built some of the park lodges and cabins in the 1930s. Since then, all of the historic structures have been refurbished. The IDNR has also built additional accommodations. From family dining to a romantic dinner for two, lodge restaurants provide a welcoming atmosphere. The dress code is casual in all park restaurants. All facilities accept major credit cards and traveler's checks. For more information, please visit dnr.illinois.gov.

NORTHWEST ILLINOIS

1. ☼ Starved Rock Lodge & Conference Center was built in part by the Civilian Conservation Corps in the 1930s and is located in a park well known for its scenic river views, waterfalls, glacier-carved canyons and hiking trails. Guests return year after year to hike, picnic, bike, fish, boat, camp and cross-country ski in the winter. **Amenities** include 90 guest rooms with full baths, Wi-Fi, TV, DVD player, coffee maker, hair dryer and telephone. Lodge amenities include a 2-sided fireplace in the Great Hall, indoor swimming pool, kiddie pool, hot tub, sauna, gift shop and spa. For more information, call (800) 868-7625 or (815) 667-4211, or visit starvedrocklodge.com. 📶📶📶 **The Main Dining Room** offers casual dining in a rustic setting. Sunday brunch is a guest favorite. Gluten-free and other dietary options available. ☼📶📶📶 **Starved Rock Cafe** serves coffee,

pastries, sandwiches, ice cream and other snacks. 📶📶📶 **Back Door Lounge** offers a laid-back atmosphere with great food and drink favorites. 📶📶 **The Veranda** offers sandwiches, pizza and more with lovely views of the Illinois River. 📶📶 *Photo: Illinois DNR*

2. White Pines Inn is crafted from stone and timber and nestled in the heart of Black Hawk Indian country under majestic white pines, making it seem forgotten by time. Discover the pioneer guest cabins, delightful country gift shop and entertaining dinner theatre that make up the historic inn. **Amenities** include 25 cozy, one-room cabins with forest views, log queen beds with full-size trundles, private baths, flat screen TVs, DVD players, gas-log fireplaces and AC/heat. For more information, call (815) 946-3817 or visit whitepinesinn.com. **The Lodge Restaurant** serves homestyle cuisine, blending seamlessly with the cabin décor. Generous portions of mostly homemade dishes define the mouthwatering menu. 📶📶📶 *Photo: White Pines*

EAST - CENTRAL ILLINOIS

Eagle Creek Golf Course is located along Lake Shelbyville in Eagle Creek State Park. The course is a challenging 6,900 yards, engineered by Ken Killian and enhanced in 2010 by Michael Benkusky. The resort is currently closed—the reopening date is pending. For more information, call (217) 756-5550 or visit golfateaglecreek.com. *Photo: Illinois DNR*

SOUTH ILLINOIS

3. ☼ Cave-in-Rock Lodge is located in historic Cave-in-Rock State Park, adjacent to the Shawnee National Forest. It takes its name from a large cave once used as a hiding place by pirates who preyed on Ohio River travelers until the 1830s. The lodge offers easy access to boating and great fishing, and has several marked and unmarked trails to enjoy the park's splendor. **Amenities** include four duplex cabins with eight suites, private balconies, deluxe bath, satellite TV, kitchenette, dining area, wet bar, gift shop, nearby playgrounds, boating access and picnic shelters. For more information, call (618) 289-4545 or visit caveinrockkaylors.com. **Cave-in-Rock Restaurant** serves family-style food. Bask in the warmth of the indoor fireplace or take in the outdoors dining on the patio. Open Wednesday through Monday. 📶📶 *Photo: Illinois DNR*

4. ☼ Giant City Lodge is a rustic lodge named for the area's unusual rock formations, which resemble the towering walls and streets of a mythical giant's city. The lodge and the park are both listed in the National Register of Historic Places. A great spot for hiking, horseback riding, fishing (bass, crappie and bluegill), boating, camping, repelling and picnicking. **Amenities** include 34 cabins with forest views, full baths, TV, telephone, refrigerator, coffee maker, meeting rooms, swimming pool, kiddie pool, stables, gift shop and Class A campground. For more information, call (618) 457-4921 or visit giantcitylodge.com. **Bald Knob Dining Room** serves excellent fare and is well known for its family-style fried chicken. There is also a cocktail lounge on the premises. ☼📶📶📶 *Photo: Illinois DNR*

5. ☼ Rend Lake Resort & Conference Center is situated on Rend Lake in Wayne Fitzgerald State Park. This fine recreation area is popular for biking, hiking, fishing, swimming, boating, tennis, trap shooting, horseback riding and birdwatching. Hunting, fishing and golfing packages and boat rentals are available. For more information, call (800) 633-3341 or (618) 629-2211, or visit rendlakeresort.com. **Amenities** include 105 rooms and cabins with full baths, TV, telephone, Wi-Fi, refrigerator, fireplace, spa, conference facilities, outdoor swimming pool, tennis court, playground, boat/bicycle rentals, convenience store, gift shop, fuel service and boat docking. 📶📶📶 **Windows Restaurant** offers a casual dining experience. Outdoor dining overlooking the lake is especially popular in warmer weather. 📶📶📶 **Reilly's Lounge** is a great place to unwind with a drink and some savory snacks. 📶📶 *Photo: IDNR* [Note: Currently closed. Reopen date pending.]

☼ **The Trace Inn Restaurant** is named for the Cahokia Trace pioneer trail that passes through Red Hills State Park near Sumner. Guests enjoy casual dining in the restaurant's rustic setting and the breeze on the enclosed deck overlooking Red Hills Lake. Available for private occasions year-round. For more information, call (618) 936-2351. 📶📶📶

NORTHEAST ILLINOIS

6. ☼ Illinois Beach Resort & Conference Center is nestled amid 4,100 acres of pristine Lake Michigan shoreline inside Adeline Jay Geokaris Illinois Beach State Park. It offers hiking, fishing and swimming. **Amenities** include 92 guest rooms, including four suites, Wi-Fi, banquet and conference facilities, fitness center



and spa, indoor swimming pool and gift shop. For more information, call (847) 625-7300 or (866) IL-BEACH, or visit ilresorts.com.

▲ **Lakeside Dining Room** serves world class culinary delights. Dine al fresco on the expansive outdoor patio with views of the lake. ☒ⓁⓁⓁ **Sandpiper Lounge** has cocktails and gorgeous views of Lake Michigan. *Photo: Illinois DNR*

WEST-CENTRAL ILLINOIS

7. ☼ **Hazlet Cottages on Carlyle Lake** offers scenic views and a relaxing environment on Carlyle Lake at Eldon Hazlet State Recreation Area. It's a popular destination for fishing, boating, sailing, swimming, hiking, biking, hunting and camping, but also great for midweek romantic getaway. The 20 cottages are furnished with kitchenettes, queen-size beds, secluded sleeping lofts, satellite TV, full bath and heat/AC, and a swimming pool nearby. For more information, call (618) 594-8702 or visit hazletcottages.com. ▲ **Carlyle Lakefront Camp Store** offers a limited dining menu,

camping supplies, grocery items, a bait shop and a laundry facility. ⓁⓁⓁ *Photo: IDNR*

8. ☼ **Pere Marquette Lodge & Conference Center** is the centerpiece of wooded Pere Marquette State Park. The lodge is situated among 8,000 acres of land overlooking the Illinois River. Its rustic Great Room boasts a 700-ton stone fireplace and a life-size chessboard. Pere Marquette is a favorite for hiking, biking, fishing, boating, horseback riding and picnicking. There are 50 lodge rooms and 22 stone cabins with private baths, TVs, telephones, conference center, indoor swimming pool, spa, playground, gift shop, class A campground facilities, board games, 25-mile bike trail, canoe, boat and kayak rentals, designated picnic areas and other attractions nearby. For more information, call (618) 786-2331 or visit pmlodge.net. ▲ **Lodge Restaurant** offers a casual dining experience combining the best of Midwestern homestyle fare with rustic elegance. ⓁⓁⓁ☼ **Mary Michelle Winery**, located in the Lodge, features locally made, award-winning wines. *Photo: IDNR*

KEY

Ⓛ	Breakfast	Ⓛ	Lunch	Ⓛ	Dinner
☎	Reservations required	☼	Open in winter	📶	Free Wi-Fi



THINGS TO DO

You can **bike, hike, horseback ride, explore nature trails, snowshoe, cross-country ski** and **snowmobile** the many pathways of Illinois. The state is crisscrossed by more than 2,000 miles of trails, 23 of which are former railroad rights-of-way.

You can spend the day **boating** on the numerous lakes in the parks. More than 8.5 million residents participate in **fishing, hunting** and **wildlife-associated recreation** throughout Illinois.

The chart in each regional section identifies the parks where various recreational activities are offered. To order activity-specific recreational guides, please call the Department of Natural Resources (IDNR) at (217) 782-7498 or visit dnr.illinois.gov/teachkids.

HIKING & BIKING TRAILS

TRAIL NETWORKS

As it loops more than 500 miles between Lake Michigan and the Mississippi River, the **Grand Illinois Trail** connects existing trails and on-road bike routes to create the state's longest continuous trail. It hugs historical canals, crosses unglaciated hills, parallels the Rock, Fox and Mississippi rivers, and includes one of America's first rail-trails.

Illinois is also home of the **Route 66 Bike Trail**. From Chicago to St. Louis, this 400-mile route incorporates on- and off-road segments on or near the historic route. Experience the magic of Route 66 from behind your handlebars.

The **Mississippi River Trail** starts in Minnesota and ends in Louisiana, and

encompasses a scenic 585-mile route through Illinois. You can really appreciate the majesty of "Old Man River" as you meander through towns that developed along it.

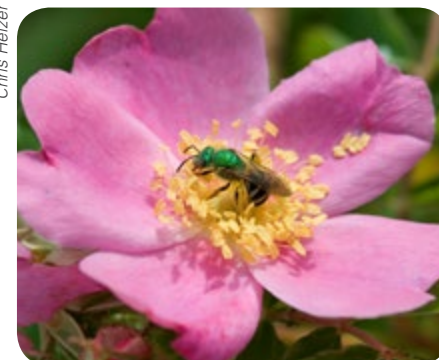
These limestone and/or paved long-distance trail networks offer opportunities for long-distance touring. More information can be found at dnr.illinois.gov/parks.

IDNR TRAILS

The **Rock Island State Trail**, located near Peoria, is the first rail-trail conversion to be handled by the IDNR. The trail offers many natural and architectural attractions in a tree-canopied corridor that is only 50 to 100 feet wide. It stretches for 26 miles from Alta, in Peoria County, to Toulon, in Stark County. The IDNR manages 45 miles of cycling/walking trails at **Tunnel Hill State Trail** in southern Illinois. Also a rail conversion, the trail traverses a 540-foot-long tunnel built in 1870–1871.

The **Hennepin Canal Parkway**, located near Sheffield, offers more than 90 miles of trail hugging the historic canal. It was the

Chris Helzer



Insects commonly called sweat bees are actually flies!

first American canal built of concrete without stonecut facings and that was a model for the construction of the Panama Canal.

Visitors to the 96-mile **Illinois & Michigan Canal** near Morris will have the option of visiting several nearby state parks and checking out restored historical sites. There is also an abundance of wildlife and distinctive landscapes, ranging from bluffs to rolling hills.

SPORTFISHING

Each year, Illinois' 1.6 million acres of surface waters—including Lake Michigan, reservoirs, impoundments and streams—attract millions of anglers. The most commonly caught fish in the one-million-acre portion of Lake Michigan owned by Illinois are salmon, yellow perch, smelt and trout. The IDNR stocks nearly one million fish annually, including lake, rainbow, brown and steelhead trout, as well as chinook and coho salmon.



DNR DIRECT

To best serve customers, vendors and agencies, **DNR Direct** depends on an automated system to expedite hunting and trapping licenses, stamps and permits, and boat and snowmobile renewals. Customers' data is stored in a central database to ease future transactions and eliminate the need to re-enter information. Not only does this save time, but also it makes paper applications obsolete. It offers a quick, simple way for outdoor enthusiasts to do business—and get about their business of enjoying Illinois' nature! Call, go online or visit one of more than 1,000 terminal locations. For more information, call (888) 673-7648 or visit dnr.illinois.gov.

Three of the U.S. Army Corps of Engineers reservoirs are popular for sportfishing: **Lake Shelbyville, Carlyle Lake and Rend Lake**. Crappie are the biggest draw. Other popular species are largemouth bass, white bass and catfish. Every year they are stocked with muskie, walleye and largemouth bass at Lake Shelbyville; largemouth bass, crappie and sauger at Carlyle Lake; and largemouth and hybrid striped bass at Rend Lake.

Illinois has more than 91,000 other impoundments. Most of these **lakes and ponds**—stocked with black bass, sunfish, crappie and catfish—are man-made and private. Each year, about 350 public lakes and ponds are stocked supplementally with species such as walleye, muskie, channel catfish, striped bass, hybrid striped bass and largemouth bass. More than 26,000 miles of **streams** lace the state where anglers vie for catfish, along with black bass, walleye, sauger, crappie and sunfish.

FISHING CLINICS

Free educational fishing clinics are offered across the state as part of the **Illinois Community Outreach & Resource Enhancement (CORE) Fishing Program**, formerly the Illinois Urban Fishing Program. Its mission is to promote conservation of Illinois' aquatic resources. The program operates sites statewide and sponsors in-school, seasonal and special event clinics year-round for children under 16.

The clinics teach sportfishing ethics, fish ecology, fish identification, fishing techniques and the care and preparation of caught fish. Participants in the program receive hands-on experience by using various types of fishing equipment provided by the IDNR. Sessions conclude

with a supervised fishing trip to a stocked site. All bait and fishing tackle are provided free of charge.

For more information, contact a CORE fishing coordinator:

Region 1 & 2: (815) 625-2903

Region 3: (217) 649-7376

Regions 4 & 5: (618) 786-3323

Chicago area: (847) 294-4134

FISHING LICENSES

Fishing licenses are available to residents and nonresidents at most IDNR offices, through various vendors around the state, such as sporting goods stores, bait shops and online at ifishillinois.org. Fishing licenses are effective February 1 of the issuing year and expire March 31 of the following year. Fishing license fees vary and are subject to change. For more information, please call (217) 782-6424.

Illinois anglers must have a sportfishing license in their possession while fishing in the state (residents under age 16 and those who are legally blind or disabled are exempt). Resident landowners and their tenants may fish without a license in waters on or flowing over land on which they reside. Illinois residents on active duty in the armed forces may fish without a license while on leave.

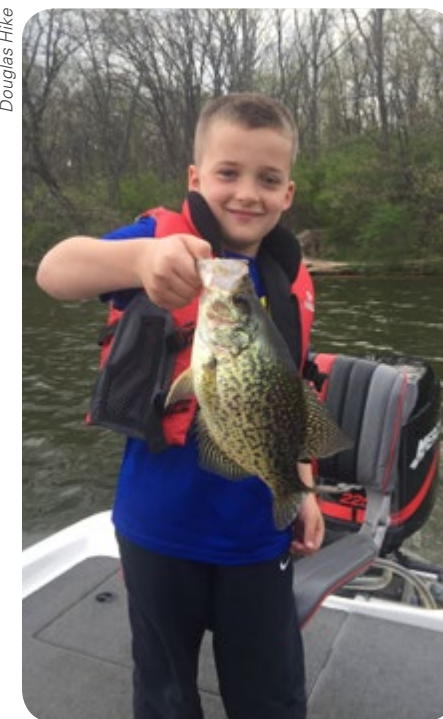
A salmon stamp, signed or affixed to a regular fishing license, is required for those taking salmon or trout in Lake Michigan. There is a half price senior's license for those over 65 and a \$1.00 plus handling fee for those over 75. An inland trout stamp, in addition to a regular fishing license, is required for those taking trout in waters other than Lake Michigan. A 24-hour sportfishing license, which includes trout and salmon fishing privileges, is available

for residents and nonresidents. Nonresident anglers must buy a nonresident sportfishing license to fish in the state. Exceptions include those under age 16, disabled veterans and anglers using fee-fishing areas licensed by the IDNR. Three types of licenses are available: **annual, 3-day** and **24-hour**. For more information about fishing regulations, where to purchase a license or license fees, call (217) 782-6424.

HATCHERIES

Three hatcheries in Illinois annually produce approximately 28 million fish, composed of 19 species, including chinook and coho salmon, lake, rainbow and brown trout, walleye, sauger,

Douglas Hike



An 8-year-old boy shows off the 13 in., 1 lb. 3 oz. crappie he caught at Rock Cut State Park. Pack your rod and prepare for your own photo op!

muskie, northern pike, largemouth and smallmouth bass, striped and hybrid-striped bass, crappie, bluegill, redear sunfish and channel and blue catfish. Visit the following facilities:

Jake Wolf Memorial Fish Hatchery: 25410 Fish Hatchery Road, Topeka, IL 61567; (309) 968-7531.

LaSalle Fish Hatchery: 2649 North 21st Road, Marseilles, IL 61341; (815) 357-6986.

Little Grassy Fish Hatchery: 1258 Hatchery Lane, Makanda, IL 62958; (618) 529-4100.

AQUATIC EXOTICS

Many exotic species have invaded the lakes and rivers of Illinois, preying on and competing with native species. Recreational water users can unintentionally transfer exotic species from one body of water to another. Help prevent the spread of aquatic exotics by following these steps:

HUNTERS/ANGLERS

- Switch to elliptical, bulb-shaped or strap anchors on decoys to avoid collecting submerged and floating aquatic plants.
- Dispose of unwanted bait in the trash or on land.
- Clean and dry anything that comes in contact with water.
- Drain water from bait buckets before leaving any body of water.
- Remove mud, plants or animals on boat, boots, anchors, decoy lines and other equipment.



BOATERS

Before leaving the boat launch:

- Drain boat of all lake or river water.
- Remove any plants and animals from the boat, trailer and all other equipment.

After leaving the boat launch:

- Wash all equipment with 104°F tap water or a high-pressure sprayer.
- Dry all equipment for at least five days.
- Be a hero, transport zero!

HUNTING

Illinois is an exceptional place to hunt small game, waterfowl, turkey and deer. Public hunting areas managed by the IDNR, along with privately owned hunt clubs, offer access to thousands of hunters each year.

Portions of Illinois are major wintering grounds for Canada geese. Every winter, hundreds of thousands flock to the state. With the Canada goose season extending well into January state-wide, these local and migratory birds provide ample opportunity to waterfowl hunters.

A number of public and private hunting areas along the Illinois and Mississippi rivers are good sites for hunting **mallards** and other ducks.

White-tailed deer abound throughout the state. Due to ideal habitat conditions and an active management program, Illinois deer are as large and robust as any in the country.

Hunters are encouraged to donate their entire deer harvest to food banks and charities. Participating meat processors will grind the venison into packages of burger. *Note: Hunters must properly field dress the deer before delivering to the meat processor.*

At the start of deer season, the



OUTDOOR OPPORTUNITIES FOR THE DISABLED †

The IDNR is committed to providing greater access and programs for people with disabilities. The IDNR's goal is to make it easier for disabled people to hunt, fish and pursue outdoor activities. In 1999, the IDNR addressed these issues, establishing a new program entitled "Disabled Outdoor Opportunities." Objectives for this program include:

- Establish partnerships with organizations representing people with disabilities and working to mainstream IDNR programs and facilities to better meet the needs of the disabled.
- Review existing opportunities to eliminate barriers to participation.

- Develop and coordinate training programs. Provide knowledge with respect to needs and concerns by working with IDNR site planners to develop barrier-free designs for recreational facilities.

Disabled hunters can participate in deer, pheasant, waterfowl and dove hunting at various sites throughout Illinois. A number of fishing areas are accessible as well. IDNR's intention is to expand these opportunities so that more individuals may participate. **Outdoor Recreation & Retention Programs** at (618) 435-8138, ext. 130; TTY (217) 782-9175; www.dnr.illinois.gov/doo.

program will offer \$50 to assist with the processing cost of whole deer donations only. Your tax-deductible donation to assist with the cost of the processing can be made by noting on your check "Illinois Sportsman Against Hunger" in the memo section, payable to the Illinois Conservation Foundation. One Natural Resources Way, Springfield, IL 62702. For participating processors, visit www.dnr.illinois.gov/programs/ISAH/Pages/ParticipatingMeatProcessors.aspx.

Wild turkey hunting is permitted in most of the state's 102 counties. The most popular hunting seasons are the five firearm/archery seasons in the spring, but turkey hunters also enjoy a fall season.

Upland game—such as cottontail rabbit, ring-necked pheasant and bobwhite quail—are still the backbone of the hunting tradition in Illinois. Rabbits are found virtually statewide. Pheasants are generally limited to central and northern Illinois and quail are found in

much of southern and central Illinois.

The hunting seasons begin in August and September with the openings of the squirrel and dove seasons. Several public areas allow squirrel hunting, and sunflower fields cultivated in public hunting areas offer the challenge of dove hunting.

Hunters must obtain permission to hunt on private property. Poaching is strictly prohibited. To report poaching, contact the **Target Poachers Hot Line**: call (877) 236-7529 or visit dnr.state.il.us/law3/poach.htm.

HUNTING LICENSES

Hunting licenses are available to residents and nonresidents at the IDNR Headquarters, as well as through vendors such as sporting goods stores, bait shops and online at dnr.illinois.gov or by calling (888) 673-7648.

Illinois hunters are required to have licenses. Exceptions exist for hunters

SPECIAL EVENTS 2017

Free Fishing Days	June 16–19	(217) 785-5822
Illinois State Fair	August 10–20	agr.state.il.us/isf
DuQuoin State Fair	August 25–Sept. 4	agr.state.il.us/dq
Grand American Championship	August 2–12	shootata.com
Rend Lake Shooting Classic & Banquet for People with Disabilities	September 16	www.dnr.illinois.gov/doo
Northern Illinois Hunting & Fishing Days	September 23–24	nihfd.org
Southern Illinois Hunting & Fishing Days	September 23–24	facebook.com/sihfd/
Fort Massac Encampment	October 21–22	southernmostillinois.com/massac-county
Youth Duck Hunt	mid-November	
Youth Pheasant Hunt	November 11	(618) 629-2320
Youth Goose Hunt	mid-January	

For more information about special events in Illinois, call (217) 785-8060.

with physical disabilities, members of the armed services on leave and resident landowners or tenants hunting on the property where they permanently reside. Hunting and trapping licenses and state stamps are effective January 1 of the issuing year to March 31 of the following year and prices vary according to type. Call (217) 782-2965 for more information. Deer and wild turkey hunters, and those wishing to hunt in certain state areas, must obtain special permits. Contact IDNR offices at (217) 782-7305.

Hunters born on or after January 1, 1980 must show proof that they have successfully completed the IDNR's Hunter Education course or a recognized safety course from another state before a license

can be issued. First-time hunters should take a safety course that covers hunter responsibility, firearm safety, wildlife conservation and wildlife identification. Call (800) 832-2599 (only in Illinois) or (217) 557-9206 for more information. Illinois residents call the State Police for the Firearm Owner's Identification Card at (217) 782-7980.

Individuals hunting migratory birds must register with the National Migratory Bird Harvest Information Program before they hunt. The program is designed to collect important harvest information on waterfowl, doves, woodcock and other migratory game birds. Registration is free.

A **State Habitat Stamp** is required for all persons, age 16 or older, who hunt wildlife,

except for those who hunt migratory waterfowl, coots and hand-reared birds on licensed hunting preserves and state-controlled pheasant-hunting areas. A State Habitat Stamp is also required of any person, age 16 or older, who traps or sells the green hides of fur-bearing mammals. Veterans with disabilities, former prisoners of war and any person who obtained a lifetime license before January 1, 1993 are exempt. All persons ages 16 or older who hunt migratory waterfowl and coots must obtain a **State Waterfowl Stamp** (unless otherwise exempt). Federal migratory waterfowl stamps, required for all hunters age 16 or older, may be obtained at any U.S. post office or through various IDNR vendors.

Nonresident hunters (except disabled veterans) are required to purchase nonresident hunting licenses. Annual and five-day licenses are available.

FOR YOUR SAFETY

Upland game hunters who use firearms must wear a solid, blaze-orange cap or hat when hunting. During firearm deer season, hunters (except waterfowl hunters) and

trappers are required to wear a solid blaze-orange upper outer garment, equaling 400 square inches, and a blaze-orange cap. Avoid hunting in extreme weather conditions. Heat exhaustion, frostbite and hypothermia can have adverse effects on you and your companions.

STATE PARK INTERPRETIVE PROGRAMS

Many state parks offer visitor centers and year-round interpretive programs to help visitors gain a better understanding of Illinois' natural features, wildlife and park facilities. When staff is not available at certain parks, visitor centers provide educational exhibits and audio/visual programs.

Special programming for Illinois school children includes hands-on activities that encourage learning by touching+, seeing and listening to the environment. School group programs are available by reservation only.

For more information, refer to the regional charts for the location of interpretive programs and contact the individual park directly or call the program manager at **(217) 782-7026**.

FULL-SERVICE MARINAS

North Point Marina (Northeast Illinois) is located on Lake Michigan, midway between Chicago and Milwaukee. This 1,477 slip, full-service marina has state-of-the-art dockage, a marine service center and other amenities. Location: North of Illinois Beach State Park at the Illinois-Wisconsin state line and is largest marina on the Great Lakes. Open: May 1–October 31. **Contact:** (847) 746-2845 or westrec.com.

Golconda Marina (South Illinois) is located in the gateway to the Smithland Pool, a 23,000-acre recreational area of fingered tributaries off the Ohio River in southeastern Pope County. The facility has 206 slips and offers overnight moorage, boat rental, fuel and other amenities. Location: Near Cave-in-Rock and Dixon Springs State Parks. Open: Slips open year-round. Concessions closed in winter. Contact: (618) 683-5875 or golcondamarina.com.



EAST-CENTRAL

Unlike the agricultural fields existing in the region today, prairies and deciduous forests once covered much of east-central Illinois. The area around Lincoln Trail State Park, with its scrubby oak and dense hazel brush, was largely unsettled until the National Road passed through in 1827. This part of the state is also home to man-made lakes at Clinton and Shelbyville, which create a range of recreational opportunities.

Abraham Lincoln's connection to Illinois began in this region in 1830 when he and his father, cousin and stepbrother built a log cabin in Macon County after arriving there from southern Indiana. The cabin was dismantled in 1876 and moved to the Centennial Exposition in Philadelphia, but the Lincoln Trail Homestead State Memorial commemorates the site today.

The Lincoln Log Cabin in Coles County was the last home of Thomas and Sarah Bush Lincoln, Abraham's parents.

For more information about sites in east-central Illinois, contact Region 3 Office, Department of Natural Resources, 1556 State Route 54, Clinton, IL 61727; **(217) 935-6860**; dnr.r3parks@illinois.gov.

CLINTON LAKE STATE RECREATION AREA (1)

Constructed in the 1970s and located 10 miles east of Clinton, Clinton Lake is popular among anglers, boaters, campers and swimmers. Clinton Lake also offers a range of hunting opportunities, attracting sportsmen from across the state. A variety of trails are available for hiking and horseback riding. 7251 Ranger Road, DeWitt 61735; GPS: 40.15709, -88.798053; **(217) 935-8722**.

EAGLE CREEK STATE PARK (2)

A favorite of walkers and hikers, this park offers year-round camping and scenic hiking trails, many of which hug the Lake Shelbyville shoreline. Near Wolf Creek State Park, the 1,463-acre site is north of Shelbyville and an easy drive from several central Illinois communities, including Springfield, Decatur and Effingham. Nestled in the heart of over 34,000 acres of woods and prairie in the park is the Eagle Creek Golf Course. This challenging yet fair test for the golfer of any ability is on the banks of Lake Shelbyville. For more information, visit golfateaglecreek.com.

2341 Eagle Creek Road, Findlay 62535; GPS: 39.492384, -88.707733; **(217) 756-8260**. 🏠

FOX RIDGE STATE PARK (3)

Amid the rolling hills and thickly wooded ridges of the Embarras River, this park features two Rent-A-Camp cabins and other camping sites, two baseball diamonds, volleyball courts, a horse trail and nine hiking trails. 18175 State Park Road, Charleston 61920; GPS: 39.402781, -88.134822; **(217) 345-6416**.

HARRY "BABE" WOODYARD STATE NATURAL AREA (4)

This wooded area encompasses 2.2 miles of the Little Vermilion River, listed as a significant stream because of its aquatic features. The site supports 12 state endangered or threatened species and provides homes for 23 forest interior species. 19268 East 670 North, Georgetown 61846; GPS: 39.9642042, -87.5765551; **(217) 442-4915**.

HIDDEN SPRINGS STATE FOREST (5)

Part of the state forest system, Hidden Springs offers 1,200 acres of camping, picnicking, hunting and hiking opportunities to visitors. A forest improvement demonstration area shows the types of trees that would be removed in managed woodlands. 2438 East 700 North, Strasburg 62465; GPS: 39.317256, -88.687101; **(217) 644-3091**.

IROQUOIS COUNTY STATE WILDLIFE AREA (6)

This site is situated in a low, glacial outwash plain associated with the Kankakee River Valley that consists of marshlands, sand ridges and dunes. The area features some of the finest and most extensive prairie-marsh and sand dune vegetation remaining in Illinois. Primarily operated as a permit pheasant hunting area, hiking, picnicking and snowmobiling opportunities

are also available. 2803 East 3300 North Road, Beaverville 60912; GPS: 40.991042, -87.603951; **(815) 435-2218**.

KICKAPOO STATE PARK (7)

West of Danville, the country's first park to be built on surface-mined land is an angler's paradise. The park also offers scuba diving, and camping, plus miles of hiking and mountain biking trails. 10906 Kickapoo Park Road, Oakwood 61858; GPS: 40.140828, -87.740593; **(217) 442-4915**.

LINCOLN TRAIL HOMESTEAD STATE MEMORIAL (8)

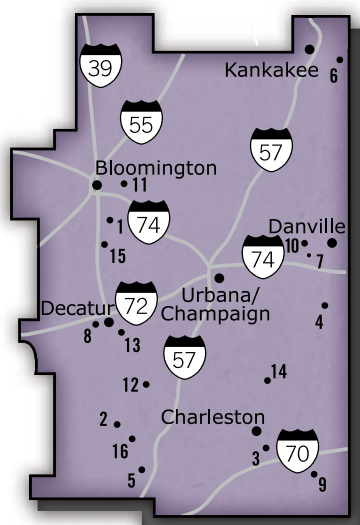
This is the site of Abraham Lincoln's first Illinois home. Bisected by the Sangamon River, the site offers picnicking and hiking. 705 Spitler Park Drive, Mt. Zion 62549; GPS: 39.802756, -89.10187; **(217) 864-3121**.

LINCOLN TRAIL STATE PARK (9)

Within the thickly wooded land of this park—which features a 146-acre lake and over 200 campsites—lies American Beech Woods Nature Preserve, with ravines holding a beech-maple forest just as they did in pioneer days. The Lincoln family passed through this area, south of Marshall, en route from Indiana to Macon County in 1830. There is also a full-service restaurant and bait shop. 16985 East 1350th Road, Marshall 62441; GPS: 39.346555, -87.703979; **(217) 826-2222**. 🏠

MIDDLE FORK STATE FISH & WILDLIFE AREA (10)

The Middle Fork River is the first Illinois waterway to be included in the National Wild & Scenic Rivers System. Paddling is popular along the river's length, which winds through a mixture of forests and



prairies. Forest and upland game hunting are also popular at the 2,700-acre site. Horseback riding on 35 miles of trails is available, as well as an equestrian campground. 10906 Kickapoo Park Road, Oakwood 61858; GPS: 40.14004, -87.735958; **(217) 442-4915**.

MORaine View State Recreation Area (11)

Ridges left by glacial movement, now dotted with scattered groves of hardwood trees, serve as the backdrop for this park. It offers year-round recreational opportunities from its location east of Bloomington-Normal and near Le Roy. This facility has a concession stand with both indoor and patio seating, and also serves as a check station for permit pheasant hunters in the fall. 27374 Moraine View Park Road, Le Roy 61752; GPS: 40.413888, -88.739147; **(309) 724-8032**.

Shelbyville State Fish & Wildlife Area (12)

A 6,400-acre wildlife area on the north end of Lake Shelbyville, this park is composed of the Kaskaskia and West Okaw units. Hunting for waterfowl and forest and upland game is popular. Boat access is provided to accommodate anglers and hunters. 562 State Highway 121, Bethany 61914; GPS: 39.632069, -88.708125; **(217) 665-3112**.

Spitler Woods State Natural Area (13)

Two-thirds of the area is a dedicated nature preserve containing one of the few remaining stands of old-growth timber in Illinois. Two trails wind through the nature preserve, allowing hikers to enjoy the unspoiled beauty of the forest. Public facilities include a large, day-use area with many picnic areas convenient to parking

spaces. 705 Spitler Park Drive, Mt. Zion 62549; GPS: 39.778431, -88.862568; **(217) 864-3121**.

Walnut Point State Park (14)

Known for its natural beauty and tranquil surroundings, the park is an oasis of hardwoods and wildlife amid fertile farm fields. Featuring a 60-acre lake, a 60-site campground, two hiking trails, numerous lakeside picnic areas and a seasonal concession operation, Walnut Point offers something for everyone. Please note, due to campground popularity, reservations are recommended during the busy summer months. 2331 East Country Road 370N, Oakland 61943; GPS: 39.69901, -88.038; **(217) 346-3336**.

Weldon Springs State Park (15)

The park features natural springs, a concession with indoor seating, a campground with showers, interpretive trails, a 29-acre lake and a wildlife observation deck. A one-room school and historic town hall house the interpretive facilities. Located three miles southeast of Clinton, the area also offers sledding, ice fishing and cross-country skiing. 4734 Weldon Springs Road, Clinton 61727; GPS: 40.119246, -88.918824; **(217) 935-2644**. 🚰

Wolf Creek State Park (16)

Wildlife watching is a favorite pastime at Wolf Creek State Park on Lake Shelbyville's eastern shore. Like nearby Eagle Creek State Park, the 2,000-acre site has several barrier-free facilities, such as year-round camping, picnicking and deer hunting. 1837 North Wolf Creek Road, Windsor 61957; GPS: 39.484641, -88.68882; **(217) 459-2831**. 🚰

EAST-CENTRAL ILLINOIS

	CLINTON LAKE	EAGLE CREEK (L)	FOX RIDGE (PC±)	HARRY "BABE" WOODYARD	HIDDEN SPRINGS	IROQUOIS COUNTY	KICKAPOO	LINCOLN HOMESTEAD	LINCOLN TRAIL	MIDDLE FORK	MORaine VIEW	SHELBYVILLE	SPITLER WOODS	WALNUT POINT	WELDON SPRINGS	WOLF CREEK (PC±)
ACREAGE	9,307	1,463	1,683	1,106	1,229	2,557	4,000	162	1,022	2,700	1,687	6,400	202	671	550	1,967
CONCESSION	🚰	•				•	🚰		🚰		🚰			🚰	🚰	
DRINKING WATER	🚰	🚰	🚰		•	•	🚰	🚰	🚰	•	🚰		🚰	🚰	🚰	•
HISTORIC STRUCTURE			•	•			🚰								🚰	
RESTAURANT	🚰						🚰		🚰		🚰			🚰	🚰	
RESTROOMS	🚰	🚰	🚰		•	🚰	🚰	🚰	🚰	🚰	🚰	🚰	🚰	🚰	🚰	🚰
SANITARY DUMP STATION*	🚰	•	•				🚰		•	•				•	•	•
VISITOR CENTER 👤 With Interpretive Staff															👤	
BIKE TRAILS							M									
BOATING	🚰	🚰					🚰		🚰		🚰	•		•	•	🚰
BOAT LAUNCHING RAMP	🚰	🚰					🚰		🚰		🚰	🚰		🚰	•	🚰
BOAT MOTORS	U	U					E		10		U	10		E	E	U
BOAT RENTALS							🚰		🚰		🚰			•	•	
CAMPING (See key for camp site type) 🛶 Canoe 🐾 Horse	A AA-BS +	A± C± Y±	A± +		C		A± BS C,D Y±		A± BS C± Y±	C D	A± BE D± Y±			A BS C Y±	A BS C,D Y±	A± BE± C± Y±
CANOE ACCESS / RENTAL (R)	🚰		•				R 1		•	•	R 1	•		•	•	
FISHING	🚰	•	🚰	•	•		🚰	•	🚰	•	🚰	🚰		🚰	🚰	•
HIKING	🚰	•	🚰	•	•	•	🚰		🚰	•	🚰	•	🚰	🚰	🚰	•
HORSE CAMPGROUND										•	🚰					•
HORSE RENTAL											🚰					
HORSE TRAILS	🚰		•							•	🚰					•
HUNTING	🚰	🚰	•	•	•	•	•		•	•	🚰	🚰		•		🚰
NATURE PRESERVE						•	•		•	•			🚰	•		
PICNICKING	🚰	🚰	🚰		•	🚰	🚰	🚰	🚰	🚰	🚰		🚰	🚰	🚰	🚰
SWIMMING BEACH	🚰										🚰					•

*Fee for non-campers

KEY

CAMPING

Class AA sites Showers, electricity, sewer and water, vehicular access; \$25/night¹

Class A sites Showers, electricity and vehicular access; \$20/night¹

Class BE sites Electricity and vehicular access; \$18/night

Class BS sites Showers and vehicular access; \$10/night

Class C sites Vehicular access or walk-in w/ shower access; \$8/night

Class D sites Tent camping or primitive sites (walk-in or backpack) with no vehicular access; \$6/night

Class Y sites Youth groups only; \$2/person with minimum daily fee of \$20

+ Advanced Reservations

~ Accepts Credit Cards

Camping rates are subject to change
¹Additional \$10 fee for holiday weekend

BOATING MOTORS

E Electric trolling only

10 10 horsepower limit

15 15 horsepower limit

25 25 horsepower limit

U Unlimited

🚰 Accessible to visitors with disabilities

N Nature preserve nearby

L Lodging/resort

M Mountain bike trail

PC Primitive cabins



NORTHWEST - ILLINOIS

Although much of Illinois has landscape shaped by glacial action, this is not the case with the extreme northwest corner. Its rolling hills, limestone cliffs and rugged terrain owe their existence to erosion by the Mississippi River and local tributaries.

Among noteworthy names aligned with this area is **John Deere**, who in 1837 made the first steel plow. The home that Ulysses S. Grant lived in prior to the Civil War can be toured in historic Galena, and the birthplace of poet and Lincoln biographer Carl Sandburg is open to visitors in Galesburg.

ANDERSON LAKE STATE FISH & WILDLIFE AREA (1)

Located on Highway 100, about 11 miles north of Browning, Anderson Lake State Fish & Wildlife Area provides fishing, hunting and camping on a backwater lake of the Illinois River. Major recreational features include dove, squirrel and

waterfowl hunting, as well as excellent catfish and bluegill fishing. 647 North State Highway 100, Astoria 61501; GPS: 40.196446, -90.203247; **(360) 902-8844**.

APPLE RIVER CANYON STATE PARK (2)

With its massive limestone cliffs, deep ravines and timbered hills, Apple River Canyon State Park credits its rugged good looks to centuries of erosion. Just under 300 acres in size, it offers primitive camping, beautiful trails and river fishing. Other opportunities include hunting, lake fishing, nature preserves and many habitat restorations. 8763 East Canyon Road, Apple River 61001; GPS: 42.447059, -90.052417; **(815) 745-3302**.

ARGYLE LAKE STATE PARK (3)

Located along an old stage route between Galena and Beardstown, Argyle Lake State Park is home to rough terrain, beaver dams and more than 200 bird species. The 1,700-acre park, which includes the 90-acre Argyle Lake, is west of Macomb and north of Colchester. 640 Argyle Park Road, Colchester 62326; GPS: **40.452859, -90.800532; (309) 776-3422**.

BANNER MARSH STATE FISH & WILDLIFE AREA (4)

Made up of more than 450 individual bodies of water and more than 200 acres of agricultural fields, Banner Marsh is 25 miles southwest of Peoria in Fulton and Peoria counties. Freshwater marshes established on-site provide excellent habitat and wildlife viewing. Contact Rice Lake, 19721 North U.S. 24, Canton 61520; GPS: 40.480643, -89.948158; **(309) 647-9184**.

BIG BEND STATE FISH & WILDLIFE AREA (5)

In Whiteside County near Prophetstown, Big Bend contains 2,376 acres. It is open for hunting, hiking and limited fishing. P.O. Box 181, Prophetstown 61277; GPS: 41.64450, -90.01365; **(815) 537-2926**.

BIG RIVER STATE FOREST (6)

Encompassing 3,000 acres along the Mississippi River, Big River State Forest is a remnant of the woodland that once bordered the vast prairies. The 1.5-mile Lincoln Hiking Trail commemorates Abraham Lincoln's march through the area in 1832, when he led 2,000 militiamen to fight in the Black Hawk War. RR 1, P.O. Box 118, Keithsburg 61442; GPS: **41.045608, -90.930245; (309) 374-2496**.

CASTLE ROCK STATE PARK (7)

Named for its St. Peter sandstone rock formations, the park offers picnicking, hiking, hunting, fishing and a primitive canoe area campground on the shore of the Rock River. Campers must access it by water, ideal for the day visitor. Located three miles south of Oregon on Highway 2, more than 700 of the park's nearly 2,000 acres are designated as an Illinois nature preserve. 1365 West Castle Road, Oregon 61061; GPS: 41.969006, -89.37988; **(815) 732-7329**.

DELABAR STATE PARK (8)

Located along the Mississippi River about 1.5 miles north of Oquawka near Highway 164 in Henderson County, Delabar State Park offers quality outdoor experiences for anglers, hikers, campers and picnickers. Many of the site's 89 acres are forested with sturdy oak, birch and hickory trees. RR 2, P.O. Box 27, Oquawka 61469; GPS: 40.964038, -90.939777; **(309) 374-2496**.

DONNELLEY/DEPUE LAKE STATE FISH & WILDLIFE AREA & COMPLEX (9)

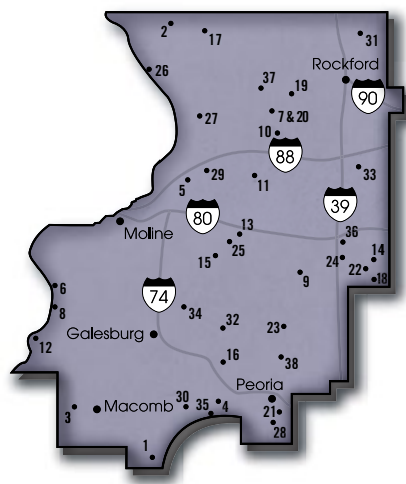
Located in Bureau and Putnam counties on the "Great Bend" of the Illinois River between Spring Valley and Putnam, the complex is on an important North American waterfowl migration corridor. Much of the 3,838-acre complex is managed for waterfowl feeding, nesting, resting, hunting and viewing. Visitors enjoy bird watching, boating, fishing, hunting, hiking, photography and nature study. 1001 West Fourth Street, Depue 61322; GPS: 41.3242025, -89.3083221; **(815) 447-2353**.

FRANKLIN CREEK STATE NATURAL AREA (10)

Developed by local volunteers, this site boasts scenic trails for hiking and horseback riding, as well as fishing and limited hunting. Tours of the historic Grist Mill are available. Located in Lee County, one mile northwest of Franklin Grove and eight miles east of Dixon, it contains a 198-acre nature preserve. 1872 Twist Road, Franklin Grove 61031; GPS: 41.85211, -89.34193; **(815) 456-2878**.

GREEN RIVER STATE WILDLIFE AREA (11)

Six miles northwest of Ohio off of Highway 26, this 2,565-acre area contains the best remaining example of the wetland-prairie mosaic that once covered nearly one-half million acres of the area's historic lowlands, known as the Great Winnebago Swamp. Today, the site is home to prairie, forest and wetland wildlife. This multi-use site provides hunting, hiking, bird watching, horseback trail riding and camping. 375 Game Road, Harmon 61042; GPS: 41.628387, -89.516455; **(815) 379-2324**.



HENDERSON COUNTY STATE FISH & WILDLIFE AREA (12)

Offering camping, picnicking, fishing, boating and winter sports, this conservation area is about 20 miles southwest of Monmouth and five miles east of the Mississippi River. RR 1, Keithsburg 61442; GPS: 40.85384, -90.97739; **(309) 374-2496**.

HENNEPIN CANAL STATE TRAIL (13)

The Canal was completed in the early 20th century as a commercial waterway connecting the Illinois River with the Mississippi. Visitors can boat, hike or paddle its full length—96 miles. 16006 875 East Street, Sheffield 61361; GPS: 41.381854, -89.691308; **(815) 454-2328**.

ILLINI STATE PARK (14)

From its location on the southern bank of the Illinois River south of Marseilles, this 500-acre park is a haven for songbirds, waterfowl and other wildlife. The young workers of the Civilian Conservation Corps constructed some of the rugged stone picnic shelters in the 1930s. 2660 East 2350th Road, Marseilles 61341; GPS: 41.317781, -88.700409; **(815) 795-2448**.

JOHNSON-SAUK TRAIL STATE RECREATION AREA (15)

One of the largest round barns in the country can be seen here. For a tour, call the Friends Foundation at (309) 721-0305. Situated on a glacial moraine five miles north of Kewanee, the park is along a trail Sauk Indians used in their treks between Lake Michigan and the confluence of the Mississippi and Rock rivers. 28616 Sauk Trail Road, Kewanee 61443; GPS: 41.322623, -89.890502; **(309) 853-2425**.

JUBILEE COLLEGE STATE PARK (16)

Home to one of the earliest educational enterprises in Illinois, the park and its sister site, Jubilee College State Historic Site, are located 15 miles northwest of Peoria near Kickapoo. In addition to the rich history of the college, the park offers camping, picnicking, hiking, mountain biking and horseback riding facilities. 13921 West Route 150, Brimfield 61517; GPS: 40.821235, -89.808295; **(309) 446-3758**. 🏰

LAKE LE-AQUA-NA (17)

This 715-acre park is nestled between the glacial plains and the rolling hills of Stephenson County. It offers a variety of outdoor recreational activities, including more than 10 miles of multi-use trails, a 40-acre lake for sport fishing, a swim beach and three campgrounds, totaling more than 170 campsites. 8542 North Lake Road, Lena 61048; GPS: 42.415219, -89.823704; **(815) 369-4282**.

LASALLE LAKE STATE FISH & WILDLIFE AREA (18)

Called a “perched” lake because it is formed by levees that rise above the surrounding land, LaSalle Lake is approximately eight miles southeast of Marseilles. High winds require adherence to safety precautions to ensure a safe and enjoyable experience. 2660 East 2350th Road, Marseilles 61341; GPS: 41.25943, -88.61798; **(815) 357-1608 or (815) 795-2448**

LOWDEN STATE PARK (19)

Assuming a restful, reverent pose, a 48-foot-tall concrete monolith of an American Indian towers above the Rock River at Lowden State Park. Local

residents named it “Black Hawk” in honor of the great Sauk warrior. 1411 North River Road, Oregon 61061; GPS: 42.03495, -89.328133; **(815) 732-6828**.

LOWDEN-MILLER STATE FOREST (20)

Situated three miles south of Oregon along the Rock River, Lowden-Miller State Forest provides excellent deer and turkey habitat on its 2,291 acres. It offers hunting, hiking, cross-country skiing and equestrian trails. Contact Castle Rock State Park, 1365 West Castle Road, Oregon 61061; GPS: 41.962171, -89.36245; **(815) 732-7329**.

MACKINAW RIVER STATE FISH & WILDLIFE AREA (21)

Located in Tazewell County, five miles northeast of Mackinaw, the site offers a diversity of landscape, covering 1,448 acres over timbered hills, open meadows and river bottoms. Canoe access enables visitors to float the scenic Mackinaw River. Other activities include fishing, hunting and hiking. 15470 Nelson Road, Mackinaw 61755; GPS: 40.550592, -89.294472; **(309) 963-4969**.

MARSEILLES STATE FISH & WILDLIFE AREA (22)

Located in LaSalle County just south of the town of Marseilles and containing 2,514 acres, this area is open to the general public for hunting. 2660 East 2350th Road, Marseilles 61341; GPS: 41.3186822, -88.7111234; **(815) 795-2448**.

MARSHALL STATE FISH & WILDLIFE AREA (23)

Located along nearly 10 miles of scenic Illinois River backwaters, the largest tract of Marshall State Fish & Wildlife Area is east of the Illinois River, adjacent to Highway 26. Bottomlands and bluffs support a variety of animals, plants and

David C. Olson



The Barn Owl is a prevalent species in Illinois.

outdoor pursuits, including picnicking, camping, fishing, hunting and hiking. Migrating waterfowl, great blue herons and bald eagles provide birders exceptional viewing opportunities. 236 State Route 26, Lacon 61540; GPS: 40.95872, -89.426002; **(309) 246-8351**.

MATTHIESSEN STATE PARK (24)

Bluffs composed of 450-million-year-old St. Peter sandstone, canyons formed by water erosion and the streaming Cascade Falls are just a few of the park’s striking features. Home to more than 200 species of birds and myriad woodland flowers, the 1,938-acre park is south of Utica and a stone’s throw from Starved Rock State Park. P.O. Box 509, Utica 61373; GPS: 41.294568, -89.010174; **(815) 667-4868**.

MAUTINO STATE FISH & WILDLIFE AREA (25)

South of Sheffield, this site encompasses 911 acres of mostly unreclaimed strip-mined land. The area is dotted with 15 stocked lakes for fishing.

Shore access is limited and shorelines tend to drop off suddenly into deep water. Hennepin Canal Parkway, 16006 875 East Street, Sheffield 61361; GPS: **41.3214872, -89.7226674; (815) 454-2328.**

MISSISSIPPI PALISADES STATE PARK (26)

Untouched by glaciers that left their mark elsewhere in the state, this park is rich with rock formations carved by erosion. Situated north of Savanna along the lofty, wooded palisades of the Mississippi River, the park's inhabitants include pileated woodpeckers, migratory waterfowl and a variety of upland wildlife. 16327 A, Route 84, Savanna 61074; GPS: 42.154848, -90.165773; **(815) 273-2731.**

MORRISON-ROCKWOOD STATE PARK (27)

Boasting an abundant animal population, Morrison-Rockwood State Park offers woodland, water and other habitat to deer, foxes, coyotes, pheasants, rabbits and turkeys. The 1,150-acre site, which includes 77-acre Lake Carlton, is north of Morrison off Highway 78. 18750 Lake Road, Morrison 61270; GPS: 41.847068, -89.961731; **(815) 772-4708.**

POWERTON LAKE STATE FISH & WILDLIFE AREA (28)

Located one mile southwest of Pekin in Tazewell County, the lake was built on the floodplain of the Illinois River in 1971 by Commonwealth Edison Company as a cooling reservoir for the fossil-fueled power plant. Today, the completely diked, 1,426-acre lake is leased by the Department of Natural Resources for visitor fishing and hunting. The entire shoreline is rocky. 7982 South Park Road, Manito 61546; GPS: 40.538698, -89.703079; **(309) 968-7135.**

PROPHETSTOWN STATE RECREATION AREA (29)

Featuring a variety of recreational opportunities, Prophetstown State Recreation Area also has historical significance. Picnicking, fishing, camping, hiking and wildlife viewing make this 52-acre site, situated on the northeast edge of Prophetstown along the south bank of the Rock River, great for family outings. Riverside Drive and Park Avenue, P.O. Box 181, Prophetstown 61277; GPS: **41.670796, -89.923868; (765) 567-4919.**

RICE LAKE STATE FISH & WILDLIFE AREA (30)

Just 15 miles north of Havana in Fulton County, Rice Lake is an outdoorsman's dream. Its high-quality habitat attracts thousands of migrating birds annually. Areas are open for fishing, boating, camping and wildlife observation. 19721 North U.S. 24, Canton 61520; GPS: 40.479598, -89.946785; **(309) 647-9184.**

ROCK CUT STATE PARK (31)

Located one mile west of the State Route 173 exit off I-90 north of Rockford, the park's 3,100 acres are host to a range of summer and winter activities, including fishing, swimming, camping and cross-country skiing. 7318 Harlem Road, Loves Park 61111; GPS: 42.369874 -88.978259; **(815) 885-3311. 🏠**

ROCK ISLAND STATE TRAIL (32)

Located in north-central Illinois, between the communities of Alta in Peoria County and Toulon in Stark County, the Rock Island Trail provides 27 miles for hiking, biking and cross-country skiing. A primitive campground is also available. The trail is one of the premier rails-to-trails facilities

in Illinois. 311 East Williams, Wyoming 61491; GPS: 41.0615742, -89.7697203; **(309) 695-2228.**

SHABBONA LAKE STATE RECREATION AREA (33)

Named for the Potawatomi chief who briefly held a small parcel of this land 10 years after the 1832 Black Hawk War, Shabbona Lake State Recreation Area is off U.S. 30, midway between DeKalb and LaSalle-Peru. Fishing fans can take advantage of one of the best fishing lakes in Illinois. Shabbona Lake campground is a semi-wooded area with 150 Class A Premium sites featuring electricity, showers and vehicular access. 4201 Shabbona Grove Road, Shabbona 60550; GPS: 41.7567333, -088.8695028; **(815) 824-2106. 🏠**

SNAKEDEN HOLLOW STATE FISH & WILDLIFE AREA (34)

The 2,740-acre Snakeden Hollow State Fish & Wildlife Area, located in Knox County, one mile southeast of Victoria, is known for its exceptional waterfowl hunting. The 112 water impoundments offer largemouth and smallmouth bass, bluegill, crappie, channel catfish, bullhead, muskellunge and walleye for fishing. Seasonal restrictions and limited access may apply. 1936 Route 167, Victoria 61485; GPS: 41.031974, -90.071926; **(309) 879-2607.**

SPRING LAKE STATE FISH & WILDLIFE AREA (35)

Containing a large bluff overlooking a long, narrow lake, the Spring Lake area is 25 miles southwest of Peoria on the east side of the Illinois River. Camping, picnicking, fishing, hiking and hunting opportunities provide many recreational

experiences. 7982 South Park Road, Manito 61546; GPS: 40.4619959, -89.8871953; **(309) 968-7135.**

STARVED ROCK STATE PARK (36)

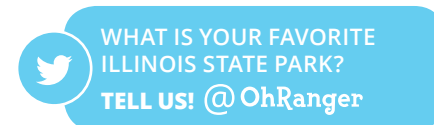
Seasonal waterfalls, inspiring bluffs and canyons dominate the landscape at Starved Rock State Park, located one mile south of Utica, midway between the cities of LaSalle-Peru and Ottawa. Legend tells of a band of Iliniwek that was under attack by rival Ottawa-Potawatomis, starving here in the 1760s atop a 125-foot sandstone bluff. Routes 178 and 71, P.O. Box 509, Utica 61373; GPS: 41.318114, -88.997562; **(815) 667-4726. 🏠**

WHITE PINES FOREST STATE PARK (37)

Located southwest of Mount Morris, White Pines Forest State Park features one of the largest southernmost stands of native white pines in Illinois. It is also noted for its vine-covered limestone bluffs. Concrete fords span Pine Creek, allowing cars to drive through the flowing stream. 6712 West Pines Road, Mt. Morris 61054; GPS: 41.98876, -89.4580; **(815) 946-3717. 🏠**

WOODFORD STATE FISH & WILDLIFE AREA (38)

Situated east of the Illinois River, northeast of Peoria just off Highway 26, Woodford is a picturesque bottomland setting with silver maple, cottonwood, ash and willow trees. Picnicking, camping, boating, fishing and hunting are enjoyed. 524 Conservation Lane, Lowpoint 61545; GPS: 40.879282, -89.4583149; **(309) 246-8351.**



NORTHWEST ILLINOIS	PARK																		
		ANDERSON LAKE	APPLE RIVER CANYON	ARGYLE LAKE	BANNER MARSH	BIG BEND	BIG RIVER	CASTLE ROCK	DELABAR	DONNELLEY/DEPUE	FRANKLIN CREEK	GREEN RIVER	HENDERSON COUNTY	HENNEPIN CANAL	ILLINI (PC±)	JOHNSON-SAUK (H,M)	JUBILEE COLLEGE		
ACREAGE		2,240	297	1,722	3,979	2,376	2,970	2,014	89	3,838	922	2,565	88	5,348	507	1,361	3,184		
CONCESSION				±											±	±			
DRINKING WATER		•	•	±			±	•	±		•	•	•	±	±	±	±		
HISTORIC STRUCTURE											±			•	±	±	•		
RESTAURANT																±			
RESTROOMS		±	±	±	±	•	±	±	±		±	±	•	±	±	±	±		
SANITARY DUMP STATION*		•	•	•			•		•		•	•			±	•	±		
VISITOR CENTER † With Interpretive Staff				†							•		•						
BIKE TRAILS				M					•					•			M		
BOATING		•		•	•		•	•	•	•			•	•	•	•			
BOAT LAUNCHING RAMP		•		±	±		±	•	•	•			•	•	•	±			
BOAT MOTORS		U		U	25		U	U	U				E	10	U	E			
BOAT RENTALS				•												•			
CAMPING (See key for camp site type) ± Canoe camping † Horse camping		C	C (NS) Y ± ±	A BE C D Y ±			C D +	±	BE C D		±	C	C	C Y	A BS Y ±	A ± + C ± Y ± PC ±	A BS C Y		
CANOE ACCESS / RENTAL (R)		•		• R	•		•	•	•		•	•	•	•	•	•			
FISHING		•	•	±	±	•	•	•	•	•	•	•	•	•	•	±	•		
HIKING			±	±		•	•	•	•	•	±	•	•	±	±	•	•		
HORSE CAMPGROUND				±			•				•	•		•			•		
HORSE RENTAL							•												
HORSE TRAILS				•			•			•	•	•		•			•		
HUNTING		•	•	•	±	•	•	•		±	•	•		•		•	•		
NATURE PRESERVE			•	•				•		•	•			N		N	•		
PICNICKING		•	±	±	•		±	•	•		•		•	±	±	±	±		
SWIMMING BEACH																			

*Fee for non-campers

KEY

CAMPING

Class AP (Premium) sites Showers, electricity and vehicular access; \$25/night¹

Class A sites Showers, electricity and vehicular access; \$20/night¹

Class BE sites Electricity and vehicular access; \$18/night

Class BSP (Premium) sites Showers and vehicular access, \$12/night

Class BS sites Showers and vehicular access, \$10/night

Class C sites Vehicular access or walk-in w/ shower access; \$8/night

Class D sites Tent camping or primitive sites (walk-in or back-pack) with no vehicular access; \$6/night

¹Additional \$10 fee for holiday weekend

Class Y sites Youth groups only; \$2/person with minimum daily fee of \$20

PC Primitive cabins

NS No Showers

+ Advanced Reservations

~ Accepts Credit Cards

Camping rates are subject to change

LAKE LE-AQUA-NA	LASALLE LAKE	LOWDEN (PC±)	LOWDEN-MILLER	MACKINAW RIVER	MARSEILLES	MARSHALL	MATTHIESSEN	MAUTINO	MISSISSIPPI PALISADES	MORRISON-ROCKWOOD	POWERTON LAKE	PROPHETSTOWN	RICE LAKE	ROCK CUT	ROCK ISLAND TRAIL	SHABONA LAKE (PC±)	SHAKEDEN HOLLOW	SPRING LAKE	STARVED ROCK (H,L)	WHITE PINES FOREST (H,L)	WOODFORD
715	2,073	207	2,291	1,448	2,514	5,658	1,938	911	2,550	1,152	1,426	52	6,940	3,092	392	1,546	2,498	2,032	2,630	385	2,901
•	•	•				•	±		±	±		•	•	±	±	±			±	±	•
±	•	±	•			•	±		±	±		•	•	±	±	±			±	±	•
		•					±		±	±					±	±			±	±	
±	±	±		•	±	±	±	±	±	±	•	±		±	±	±	±	±	±	±	±
•	•	•				•			•	•	•			±	±	±			±	±	•
															•			±	±	±	
•	•	•				•		•	±	•		•	•	±	±	±	•		±	±	•
•	•	•				•		±	±	•	•	•	•	±	±	±	•		±	±	•
E	U	U				U		E	U	10	U	U	U	U	U	10	10		U		U
•										•						•					
A BS C Y +		A BS C				BE C D	±		A ± BS ± DY ±	A BS Y ±		A BS Y	BE D Y	AP ± BSP C Y ±	D Y	AP ± Y ±		C D Y	AP ± Y ±	BS ± Y ±	C
•	•	•		•	•	•	•	•	•	• R		•	•	• R	•	•		•	• R	•	•
±	±	•		•	•	•	•	•	•	±	±	•	•	±	•	±	•	•	±	•	•
•	•	•	•	•					•	•		•		±	•	•	•	•	±	•	•
•						CNS				•											
•			•				•			•											
•			•	•	•	•	±	•	•	•	•	•	•	±	±	±	±	•	±	•	•
±	±	±				•	±		•	±		•	•	±	±	±		•	±	±	±
±														±							

BOATING MOTORS

E Electric trolling only

10 10 horsepower limit

15 15 horsepower limit

25 25 horsepower limit

U Unlimited

± Accessible to visitors with disabilities

N Nature preserve nearby

H Historic/archeological site

L Lodging/resort

M Mountain bike trail

† Pilot no-wake program

David Brewer



Yellow garden spiders serve a purpose: They eat insects that feed on crops!



NORTHEAST - ILLINOIS

The northeast section of Illinois is the most recently glaciated portion of the state. Remnants of the great prairies that once covered nearly 60 percent of the land are evident here, as are most of the state's glacial lakes and true bogs. You'll also find the dunes of Illinois Beach along Lake Michigan displaying, within its six-mile length, thousands of years of geologic development and nearly 700 different plant species.

The Wea tribe of Miami occupied the Illinois Beach State Park area during the last quarter of the 17th century. In 1802, an American military fortification, Fort Dearborn, was erected in Chicago—on land used by the Potawatomi and Ottawa. Ten years later, U.S. forces abandoned the fort and, by 1830, fewer than 100 people lived there. However, following the 1832

Black Hawk War, Chicago's population swelled to 1,800 people and, by 1838, the city was established as a shipping port. For more information about sites in northeast Illinois, contact Region 2 Office, Tri-County State Park, 2050 West Stearns Road, Bartlett, IL 60103; **(847) 608-3100**; dnr.r2parks@illinois.gov.

BUFFALO ROCK STATE PARK & EFFIGY TUMULI (1)

On the bluffs of the Illinois River—about two miles west of Ottawa on Dee Bennett Road at Buffalo Rock State Park—stand five earthen sculptures molded from Illinois clay. Called Effigy Tumuli, this unique "earth art" is a grand sculpture. All five subjects—snake, turtle, catfish, frog and an insect called a "water strider"—are native to the Illinois River area. 1300 North 27th Road, Ottawa 61350; GPS: 41.327411, -88.907545; **(815) 433-2220**.

CHAIN O'LAKES STATE PARK (2)

Comprising 6,063 acres of northeastern Illinois, Chain O'Lakes State Park borders three natural lakes and the Fox River, which connects seven other lakes. Pheasant hunting is allowed by permit only. Firearm hunting for deer and waterfowl is offered by lottery. Bowhunting for deer is also available. Fishing for muskie, northern pike, largemouth bass and other species is optimal from boats or piers due to the marshy shoreline environment. Camping, hiking, biking and boating are also popular. 8916 Wilmot Road, Spring Grove 60081; GPS: 42.4577652, -88.2002891; **(847) 587-5512**.

CHANNAHON STATE PARK (3)

One mile south of U.S. 6 off Canal Street in Channahon, this state park serves as the trailhead for the 61-mile I & M Canal State Trail. Historic structures include a canal lock-tender's house and canal locks 6 and 7. 25302 West Story Street, Channahon 60410; GPS: 41.4237179, -88.225712; **(815) 467-4271**.

DES PLAINES STATE FISH & WILDLIFE AREA (4)

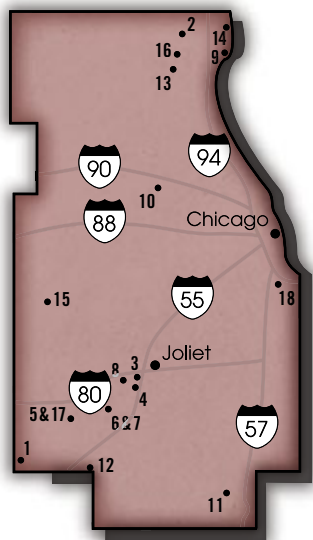
Located on I-55, eight miles south of I-80, this site's 5,500 acres make up one of the largest and most used hunting and field training areas in the state. Visitors can also picnic, boat and fish. There are two small natural areas and 12 miles of equestrian trails. 24621 North River Road, Wilmington 60481; GPS: 41.3723733, -88.2072219; **(815) 423-5326**.

GEBHARD WOODS STATE PARK (5)

Dotted with shade trees, including eastern cottonwoods, maples and sycamores, Gebhard Woods State Park stretches along the I & M Canal in the city of Morris. Hikers, campers, picnickers and paddlers frequent this 30-acre site, making it one of the state's more popular parks. 401 Ottawa Street, Morris 60450; GPS: 41.357726, -88.436289; **(815) 942-0796**.

GOOSE LAKE PRAIRIE STATE NATURAL AREA (6)

Visiting Goose Lake Prairie State Natural Area today is much like seeing Illinois as it was 150 years ago, when prairie covered nearly 60 percent of the state. Big bluestem, Indian grass and switchgrass thrive here, as do broad-leafed flowering plants known as forbs. The area is situated southeast of Morris on Pine Bluff/Lorenzo



Road, midway between Highway 47 and I-55. 5010 North Jugtown Road, Morris 60450; GPS: **41.3590452, -88.3253494; (815) 942-2899.**

HEIDECKE STATE FISH & WILDLIFE AREA (7)

Just north of Goose Lake Prairie State Natural Area is Heidecke State Fish & Wildlife Area. Heidecke Lake, itself, is leased to the Department of Natural Resources for hunting and fishing. Regulations apply at this 2,129-acre site. 5010 North Jugtown Road, Morris 60450; GPS: 41.365215, -88.325615; **(815) 942-6352.**

I & M CANAL STATE TRAIL (8)

Directly responsible for the growth of Chicago and other Illinois cities, the I & M Canal linked Lake Michigan to the Illinois River at LaSalle when it was constructed in 1848. Today, the old towpath is used as a 61-mile hiking, biking and snowmobiling trail. 402 Ottawa Street, Morris 60450; GPS: 41.569722, -88.069722; **(815) 942-9501.**

ADELINE JAY GEO-KARIS ILLINOIS BEACH STATE PARK (9)

Stretching more than 6.5 miles along the shore of Lake Michigan, Illinois Beach State Park contains the only beach ridge shoreline remaining in the state. The park has dramatic ridges and swales, dunes, sprawling marshes, oak savannahs and a vast array of animal life and vegetation. Lakefront, Zion 60099; GPS: 42.419967, -87.806625; **(847) 662-4811. 🚶**

JAMES "PATE" PHILIP STATE PARK (10)

Formerly Tri-County State Park, this park conserves 501 acres of open space

at the junction of Cook, Du Page and Kane counties. Years of natural resource restoration since the park's acquisition in 1991 has reestablished grassland, woodland and wetland communities that support native plants, wildlife and a tributary to the east branch of Brewster Creek.

The park's development is geared to natural resources education. The visitor center contains photomurals and interactive displays highlighting valuable ecosystems. A multi-screen video presentation tells the story of evolving land uses, from pre-settlement times to present day. Outdoor recreation opportunities include a 3.8-mile, multi-loop trail system (hiking, biking and cross-country skiing) and a picnic area with a shelter building and restrooms. The park is located at 2050 West Stearns Road, 2.5 miles west of IL Route 59 in Bartlett 60103; GPS: 41.97621, -88.267078; **(847) 608-3100.**

KANKAKEE RIVER STATE PARK (11)

Recreation seekers from Chicago began using the area now known as Kankakee River State Park as early as the 1890s. Today, visitors from Chicago, Kankakee and throughout northeastern Illinois are drawn to the park for its fishing, canoeing, hunting, camping and bicycling trails. 5314 West Route 102, Bourbonnais 60914; GPS: 41.202036, -87.973709; **(815) 933-1383. 🚶**

MAZONIA-BRAIDWOOD STATE FISH & WILDLIFE AREA (12)

Three miles southwest of Braidwood, the Mazonia Braidwood State Fish & Wildlife Area provides more than 1,700 acres of grassland, brushy draws and

shrubs on its 6,120 acres. For the angler, 200 water impoundments contain bass, crappie, channel catfish and other species. Hunters will enjoy this area for its excellent dove, pheasant, goose, duck and rabbit hunting. Route 53 & Huston Road, P.O. Box 126, Braceville 60407; GPS: 41.203844, -88.274288; **(815) 237-0063.**

MORaine HILLS STATE PARK & MCHENRY DAM (13)

Deriving its name from the boulders, stones and other glacial debris, Moraine Hills State Park hosts thriving marsh and fen communities among its 2,247 acres of rolling hills. More than 10 miles of one-way trails make Moraine Hills popular for hikers and bicyclists. 1510 South River Road, McHenry 60051; GPS: 42.309232, -88.227979; **(815) 385-1624.**

NORTH POINT MARINA (14)

Located on Lake Michigan's northern Illinois shoreline, midway between Chicago and Milwaukee, this full-service marina features 1,500 boat slips and 46 charter captains. Located just north of Illinois Beach State Park, it is bordered on the west by an area of natural wetland, forest and prairie. 701 North Point Drive, Winthrop Harbor 60096; GPS: 42.487961, -87.80163; **(847) 746-2845.**

SILVER SPRINGS STATE FISH & WILDLIFE AREA (15)

Named after a small pool of clear, bubbling water found at the site, this park and wildlife area is situated five miles west of Yorkville off Highway 47. Picnicking, fishing, hiking, hunting and wildlife viewing are all popular attractions. 13608 Fox Road, Yorkville

60560; GPS: **41.62635, -88.538132; (630) 553-6297.**

VOLO BOG STATE NATURAL AREA (16)

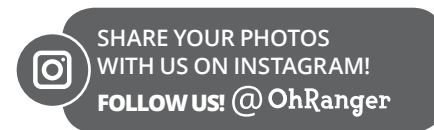
Volo Bog State Natural Area was created when melting glaciers pushed deep into the ground 12,000 years ago. Sphagnum moss, cattails, leatherleaf and a tamarack forest are part of the bog's interesting plant life. 28478 West Brandenburg Road, Ingleside 60041; GPS: 42.350171, -88.169575; **(815) 344-1294.**

WILLIAM G. STRATTON STATE PARK (17)

Although it is only seven acres, William G. Stratton State Park is widely used by boaters and anglers from northeastern Illinois. Launch ramps with docks serve boaters from the Illinois River bridge in Morris. 401 Ottawa Street, Morris 60450; GPS: 41.360517, -88.409413; **(815) 942-0796.**

WILLIAM W. POWERS STATE RECREATION AREA (18)

Offering fishing, waterfowl hunting, picnicking and winter sports, William W. Powers State Recreation Area is on Chicago's far southeast side, along the Indiana border. At the center of its attraction is Wolf Lake, which is segmented by dikes and offers six miles of some of the area's best shoreline fishing to bank anglers. The park also has a brand new visitor's center, offering a range of interpretive programs to guests, including bilingual offerings. 12949 South Avenue "O," Chicago 60633; GPS: 41.66893, -87.536876; **(773) 646-3270.**



NORTHEAST ILLINOIS

	PARK	BUFFALO ROCK	CHAIN O' LAKES (PC±)	CHANNAHON	DES PLAINES	GEORGE WOODS	GOOSE LAKE PRAIRIE	HEIDECKE	I & M CANAL (H)	ILLINOIS BEACH (L)	JAMES PATE PHILIP	KANKAKEE RIVER (PC±)	MADONIA/BRAIDWOOD	MORRIS HILLS	NORTH POINT MARINA	SILVER SPRINGS	VOLO BUG	WILLIAM G. STRATTON	WILLIAM W. POWERS
ACREAGE		298	6,063	25	5,500	30	2,468	2,129	2,802	4,160	501	3,932	2,247	2,247	140	1,314	1,243	7	624
CONCESSION		▲		●						●				●	▲	●			
DRINKING WATER		●	▲	●		●	●		●	▲	●			▲	▲	▲	▲	▲	●
HISTORIC STRUCTURE				●		●			●						▲				●
RESTAURANT										▲					▲				
RESTROOMS		●	▲	●	▲	●	▲	▲	●	▲	●	▲	▲	▲	▲	▲	▲	▲	▲
SANITARY DUMP STATION*		●							▲			▲		▲					
VISITOR CENTER † With Interpretive Staff							●		†		●	▲		▲			†	†	†
BIKE TRAILS		●	●	●		●			●	▲	●	●		▲	▲			●	●
BOATING			●		●				●			●	●	●	●	●		●	●
BOAT LAUNCHING RAMP		▲		▲			●					●	●	●	●	▲		▲	●
BOAT MOTORS		U		U/10				E				10	U/E	E	U	E		U	U
BOAT RENTALS		●												●		●			
CAMPING (See key for camp site type) ▲ Canoe camping ▲ Horse camping		AP± BSP Y +		D Y		D Y			D Y±	AP± Y +		AP± BEP C Y +				Y			
CANOE ACCESS / RENTAL (R)		●R	●	●		●			●	●	●	●	●	●R		▲		●	●
FISHING		▲	●	▲	●	●	●	●	●	●	▲	●	▲	▲	▲	▲		●	●
HIKING		●	▲	●	●	●	●	●	●	●	●	▲	▲	▲	▲	▲	●	●	●
HORSE CAMPGROUND												●							
HORSE RENTAL		●																	
HORSE TRAILS		●			●							●		●		●			
HUNTING		●		▲		●	●		●	●	▲	▲	●	●	●	●	●		●
NATURE PRESERVE		●		●		●		●	●	●	●	●		●	▲		●		
PICNICKING		●	▲		▲	▲	▲		●	▲	●	▲		▲	▲	▲	▲	▲	▲
SWIMMING BEACH									●						▲				

*Fee for non-campers

KEY

CAMPING

Class AP (Premium) sites
Showers, electricity and vehicular access; \$25/night¹

Class BEP (Premium) sites
Electricity and vehicular access; \$20/night

Class BSP (Premium) sites
Showers and vehicular access, \$12/night

Class C sites Vehicular access or walk-in w/ shower access; \$8/night

Class D sites Tent camping or primitive sites (walk-in or back-pack) with no vehicular access; \$6/night

Class Y sites Youth groups only; \$2/person with minimum daily fee of \$20

+ Advanced Reservations

~ Accepts Credit Cards

Camping rates are subject to change

¹Additional \$10 fee for holiday weekend

BOATING MOTORS

E Electric trolling only

10 10 horsepower limit

15 15 horsepower limit

25 25 horsepower limit

U Unlimited

▲ Accessible to visitors with disabilities

H Historic/archeological site

L Lodging/resort

PC Primitive cabins



SOUTH - ILLINOIS

Southern Illinois, with its bald cypress swamps and heron rookeries, is reminiscent of the bayous of the Deep South. The Cache River State Natural Area and Heron Pond Nature Preserve are examples of the rich wetland ecosystems found in this region. It is also home to wooded hillsides at Shawnee National Forest, intriguing rock formations at Giant City and Ferne Clyffe state parks and commercial and recreational boat traffic of the Wabash, Ohio and Mississippi rivers in this part of the state.

Fort Massac State Park stands in Metropolis at the state's southern tip as a sentinel in the course of early American history. The fort was used during the French-Indian, the Revolutionary and the Civil wars. Superman, also from Metropolis, has a statue in his honor in the town square.

For more information about sites in southern Illinois, contact Region 5 Office, Department of Natural Resources, 11731 State Highway 37, Benton, IL 62812; **(618) 435-8138**; dnr.r5parks@illinois.gov.

BEALL WOODS STATE PARK (1)

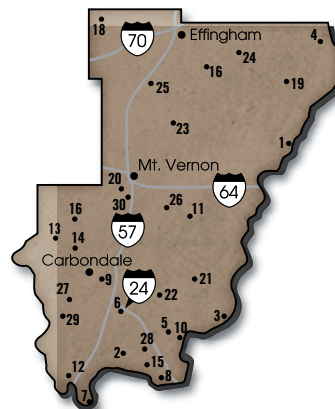
Listed in the United States Register of Natural Landmarks as the "Forest of the Wabash," this park supports 64 species of trees within its 635 acres. Several miles of scenic nature trails start at the visitor center. The park is six miles south of Mount Carmel. 9285 Beall Woods Avenue, Mt. Carmel 62863; GPS: 38.35538, -87.826648; (618) 298-2442.

CACHE RIVER STATE NATURAL AREA (2)

This 14,960-acre natural area has three nature preserves—Heron Pond/Wildcat Bluff, Little Black Slough and Section 8 Woods. Nationally significant for the swamps found at the northern portion of their range, the area contains 100 state threatened or endangered plant and animal species and 11 state champion trees. Visitors enjoy birdwatching, hunting, wildlife watching and hiking. Visitors can start their visit to the Cache River by experiencing the new Henry N. Barkhausen - Cache River Wetlands Center, open Wednesday through Sunday, 9 a.m. to 4 p.m.; 8885 State Route 37 South, Cypress 62923; GPS: 37.31290 - 89.02120; **(618) 657-2064**.

CAVE-IN-ROCK STATE PARK (3)

This park is named for a 55-foot-wide, 500-foot-long cave that overlooks the Ohio River along the Illinois-Kentucky border in extreme southern Illinois. From 1797 to the mid-1830s, the roost served as a headquarters for bands of famous outlaws. The park offers camping, picnicking, hiking, boating and fishing. Located in the park is Cave-in-Rock Restaurant and Lodge. #1 New State Park Road, Cave-in-Rock 62919; Mailing Address:





David C. Olson

The plains hog-nosed snake inhabits open, sparsely vegetated areas.

1210 Tipple Road, Carrier Mills 62917; GPS: 37.46976, -88.15540; Park Office: **(618) 289-4325**; Lodge: **(618) 289-4545**.

CRAWFORD COUNTY STATE FISH & WILDLIFE AREA (4)

Managed primarily for hunting and fishing, this 1,100-acre area of wildlife habitat and nine fishing ponds is two miles west and one mile south of Hutsonville. 12609 East 1700th Avenue, Hutsonville 62433; GPS: 39.0997428, -87.7103743; **(618) 563-4405**.

DIXON SPRINGS STATE PARK (5)

During the 19th century, springs of mineral-enriched water attracted people to the community of Dixon Springs. Today, park visitors may swim in its outdoor pool or soak up the relaxing atmosphere of the moss-covered boulders, craggy overhangs and rushing brooks. Route 146, Golconda 62938; GPS: 37.38232, -88.66960; **(618) 949-3304** or **(618) 949-3394**. 🚸

FERNE CLYFFE STATE PARK (6)

Located south of Marion, this park is defined by the fascinating flora and geologic formations of the scenic Shawnee Hills. Trails wind past an intermittent waterfall and the largest shelter bluff in southern Illinois. Route

#37 South, P.O. Box 10, Goreville 62939; GPS: 37.531767, -88.98555; **(618) 995-2411**.

FORT DEFIANCE STATE PARK (7)

Historical day use site with picnicking available, featuring a large observation tower overlooking the Mississippi and Ohio rivers. U.S. 60 & U.S. 62, Cairo 62914; GPS: 36.985243, -89.144869; **(618) 776-5689**.

FORT MASSAC STATE PARK (8)

Dedicated the first Illinois state park in 1908 and overlooking the Ohio River at Metropolis, this park has a military history predating the Revolutionary War. Fort Massac Encampment, held the third week of October, and several other living history weekends bring the past to life for history buffs. The site also has a visitor center, museum and a replica of the American fort, built in 1802, and a day use area offering camping, picnic areas with shelters, boat ramp and hunting. It is also home to a new PDGA 18-hole Disc Golf Course and the George Rogers Clark Discovery Bike/Walking Trail. The museum has artifacts from the 1757 French occupation of the area to the early American time period. There is a log cabin that shows family living conditions around 1802. The museum is open seven days a week from 8 a.m. to 3:30 p.m. 1308 East Fifth Street, Metropolis 62960; GPS: 37.149932, -88.695512; **(618) 524-4712**. 🚸

GIANT CITY STATE PARK (9)

Tucked into the Shawnee Hills near Carbondale, Giant City State Park tells a geologic tale 315 million years old. The rectangular joint pattern of the area's Pennsylvanian bedrock, called Pounds sandstone, is the basis for the park's unusual rock formations, which, to early settlers, reportedly looked like streets of a "giant city."

Giant City Lodge is located within the park. Giant City Lodge, 460 Giant City Lodge Road, Makanda 62958; (618) 457-4921; Giant City Visitor Center, 235 Giant City Road, Makanda 62958; (618) 457-4836. GPS: 37.6063419, -89.1868429.

GOLCONDA MARINA (10)

Recognized as one of the finest fishing and boating areas in the nation, this marina is located on a scenic stretch of the Ohio River and the gateway to the Ohio River's Smithland Pool. The 619-acre full-service marina has more than 200 slips and is within a short drive of Dixon Springs and Cave-in-Rock state parks. See the "Things To Do" chapter for more information. P.O. Box 178, RR 2, Golconda 62958; GPS: 37.38325, -88.49110; **(618) 683-5875**.

HAMILTON COUNTY STATE FISH & WILDLIFE AREA—DOLAN LAKE (11)

Located about eight miles southeast of McLeansboro, the area is home to 76-acre Dolan Lake, which teems with largemouth bass, bluegill and channel catfish. Wildlife food and shelter plots support game populations for hunting on its 1,680 acres. RR 4, P.O. Box 242, McLeansboro 62859; GPS: 38.081609, -88.409729; **(618) 773-4340**.

HORSESHOE LAKE STATE FISH & WILDLIFE AREA (ALEXANDER COUNTY) (12)

This area is noted for its large stands of tupelo, swamp cottonwood and cypress trees. Situated northwest of Cairo in Alexander County, the site is known for its fall and winter waterfowl and bald eagle populations. West side campground is open year-round. East campground is open May 1 through September 30. P.O. Box 85, Miller City 62962; GPS: 37.134045, -89.349232; **(618) 776-5689**. 🚸

KINKAID LAKE STATE FISH & WILDLIFE AREA (13)

Located near Murphysboro, this 3,685-acre site is dominated by sandstone bluffs, rolling hills and an oak-hickory forest. Picnicking, fishing, boating and hunting are popular. 52 Cinder Hill Drive, Murphysboro 62966; GPS: 37.7724272, -89.3787358; **(618) 684-2867**.

LAKE MURPHYSBORO STATE PARK (14)

With its principal attraction being a man-made lake totaling 145 acres, this park draws anglers in search of largemouth bass, sunfish, crappie and channel catfish. Much of the 1,000 acres are wooded and include a large variety of native wild orchids. The northwest section of the park features an archery range as well. 52 Cinder Hill Drive, Murphysboro 62966; GPS: 37.782608, -89.37959; **(618) 684-2867**.

MERMET LAKE STATE FISH & WILDLIFE AREA (15)

The site offers a 460 acre fishing lake, picnic area, walking trails, hunting, over 110 acres of nature preserve/natural area, several restored wetlands and a restored prairie with an interpretive trail. This area is known for its pan fishing and waterfowl hunting and has become popular for wildlife and bird watching. A national archery tournament is held there each year the last week of June. 1812 Grinnel Road, Belknap 62908; GPS: 37.270365, -88.848496; **(618) 524-5577**.

NEWTON LAKE STATE FISH & WILDLIFE AREA (16)

Southwest of Newton in Jasper County, this 6,400-acre area hosts a variety of wildlife, most notably the state endangered prairie chicken. The site offers excellent fishing, ample picnic areas and a picturesque shoreline trail

system, as well as a 1,775-acre cooling lake. 3490 East 500th Avenue, Newton 62448; GPS: 38.915346, -88.279953; **(618) 783-3478**.

PYRAMID STATE PARK (17)

An acquisition of 16,000 acres of land makes this park Illinois' largest, with approximately 19,000 acres to enjoy. Expect excellent fishing, waterfowl hunting and wildlife viewing opportunities. Five miles south of Pinckneyville on Highway 127. 1562 Pyramid Park Road, Pinckneyville 62274; GPS: 38.031327, -89.404678; **(618) 357-2574**.

RAMSEY LAKE STATE RECREATION AREA (18)

Rolling hills, timbered shoreline and beautiful Ramsey Lake make this park a unique and popular recreation spot. Visitors will enjoy the picturesque woods, secluded picnic areas, and fishing and hunting opportunities. It's popular with people who just want to relax and outdoor enthusiasts who hike, hunt, fish and camp. The 1,960-acre area is located one mile northwest of Ramsey in Fayette County. P.O. Box 97, Ramsey 62080; GPS: 39.160681, -89.1259; **(618) 423-2215**.

RED HILLS STATE PARK (19)

This 967-acre site offers wooded hills, picturesque meadows, nature areas and an abundance of wildlife. Camping, hiking, fishing and hunting are popular. The park is home to the Trace Inn Restaurant (see the "Lodging & Dining" chapter) and manages the 627-acre Chauncey Marsh Wetland. 3571 Ranger Lane, Sumner 62466; GPS: 38.728688, -87.836322; **(618) 936-2469**. 🏠

REND LAKE STATE FISH & WILDLIFE AREA (20)

Anglers looking for crappie, catfish and bass drop their lines at this area, located on

the 18,900-acre Rend Lake, south of Mount Vernon. Valuable habitat exists for many species of ducks, shorebirds and wading birds. 10885 East Jefferson Road, Bonnie 62816; GPS: 38.1982073, -88.9900258; **(618) 279-3110**.

SAHARA WOODS STATE FISH & WILDLIFE AREA (21)

Donated to the state in 1998, this area was once a thriving strip coal mine. It offers archery and late winter firearm deer hunting, along with fishing on its 375 acres of water throughout the site. Also available are upland game hunting and spring turkey hunting by site specific permits. 1210 Tipple Road, Carrier Mills 62917; GPS: 37.7158622, -88.6619659; **(618) 994-2022**.

SALINE COUNTY STATE FISH & WILDLIFE AREA (22)

Five miles southwest of Equality, this multi-use site offers many opportunities for the sportsman and recreationist alike. The site has a 105-acre lake, 1,000-acre hunting area, 43 class C camp sites, a seven-mile bike path, an equestrian campground and seasonal trout pond. 85 Glen O. Jones Road, Equality 62934; GPS: 37.690409, -88.380192; **(618) 276-4405**.

SAM DALE LAKE STATE FISH & WILDLIFE AREA (23)

One mile northwest of Johnsonville, in Wayne County, this 1,300-acre, multi-use recreational area—with a 194-acre lake—provides habitat for shorebirds and upland game, and offers camping, hunting, hiking, fishing and horseback riding. 620 County Road 910 North, Johnsonville 62850; GPS: 38.538633, -88.584652; **(618) 835-2292**. 🏠

SAM PARR STATE FISH & WILDLIFE AREA (24)

The park boasts a 183-acre lake and offers picnicking, hiking, camping, fishing and hunting. The 1,100-acre site is three miles northeast of Newton. 13225 East State Highway 33, Newton 62448; GPS: 39.012248, -88.120308; **(618) 783-2661**.

STEPHEN A. FORBES STATE RECREATION AREA (25)

A 585-acre lake surrounded by forest and 115 camping sites highlights this park. Fishing, hunting, swimming, boating, waterskiing, picnicking, hiking and horseback riding are popular at this 3,100-acre site northeast of Salem. 6924 Omega Road, Kinmundy 62854; GPS: 38.726099, -88.779831; **(618) 547-3381**.

TEN MILE CREEK STATE FISH & WILDLIFE AREA (26)

Located in Jefferson and Hamilton counties, these 5,910 acres vary from flat bottomlands to rolling forestlands. Fields throughout the site provide 1,000 acres of planted food for wildlife. Hunt for rabbit, quail and waterfowl, and fish in its 250 acres of lakes and ponds. RR 1, P.O. Box 179, Route 14, McLeansboro 62859; GPS: 38.08171, -88.62564; **(618) 643-2862**.

TRAIL OF TEARS STATE FOREST (27)

Set among the rugged slopes of the Ozark Hills in southern Illinois, this forested site offers picnic shelters with fireplaces and grills. In spring, up to 620 native species of flowering plants are on display along a network of trails for hiking and horseback riding. The forest is located five miles northwest of Jonesboro. 3240 State Forest Road, Jonesboro 62952; GPS: 37.496461, -89.356691; **(618) 833-4910**.

TUNNEL HILL STATE TRAIL (28)

Located in southern Illinois, this 45-mile-long biking/hiking trail begins at Feazel Street in Harrisburg and passes through seven more communities in four counties on its way to the Barkhausen/Cache River Wetlands Center in Whitehill. Bikers and hikers pass through scenic farmland, hills, bluffs and bottomland areas in the Shawnee National Forest and the Cache River State Natural Area. Visitor Center, State Highway 146 East, Vienna 62995; GPS: 37.417200, -88.887900; **(618) 658-2168**. 🏠

UNION COUNTY STATE FISH & WILDLIFE AREA (29)

Located 7.5 miles west of Jonesboro off State Route 146 in Union County, the 2,400-acre Union County Public Hunting Area is known locally and statewide for its waterfowl hunting. Opportunities also exist for hunting deer, squirrel and doves at other locations on the 6,202-acre main site, and on over 4,000 acres at satellite areas. Birders enjoy over 168 species counted on the refuge, including eagles and swans. Fishing is available March through mid-October on the 350-acre Lyerla Lake and the 275-acre Grassy Lake. 2755 Refuge Road, Jonesboro 62952; 37.422112, -89.3733345; **(618) 833-5175**.

WAYNE FITZGERRELL STATE RECREATION AREA (30)

This 3,300-acre paradise offers outstanding opportunities for field trials, camping, picnicking, horseback riding, hiking, biking, fishing and hunting. (Upland game hunters flock to here each fall to participate in a controlled pheasant hunt.) The park's Rend Lake Resort overlooks an 18,000-acre reservoir of the same name. 11094 Ranger Road, Whittington 62897; GPS: 38.089715, -88.948059; **(618) 629-2320**.

SOUTH ILLINOIS	PARK	BEALL WOODS	CACHE RIVER	CAVE-IN-ROCK (L)	CRAWFORD COUNTY	DIXON SPRINGS (POOL)	FERNE CLYFFE	FORT DEFANCE	FORT MASSAC (H)	GIANT CITY (L)	GOLCONDA MARINA	HAMILTON COUNTY	HORSESHOE LAKE	KINKAID LAKE
ACREAGE		635	14,328	204	1,129	931	2,430	21	1,499	4,055	619	1,683	9,550	3,685
CONCESSION				+		+			•	+	+	+		
DRINKING WATER		+	•	+		+	+		+	+	+	+	+	+
HISTORIC STRUCTURE				•					•	•				
RESTAURANT				+						+		+		
RESTROOMS		+	+	+	•	+	+		+	+	+	+	+	+
SANITARY DUMP STATION*		•		+		+	•		+	+		•	+	
VISITOR CENTER † With Interpretive Staff		†	†						†	†				
BIKE TRAILS				•					•			•	•	
BOATING		•	•	+					•		•	•	•	•
BOAT LAUNCHING RAMP		•	•	+					•		•	•	+	•
BOAT MOTORS		E	10	U					U		U	10	10	U
BOAT RENTALS											•	•		
CAMPING (See key for camp site type) ☞ Canoe ☞ Horse		C±Y	A±BSY		BE±DY	A±BE±CY			A±BS±CY	A±CY	C	A±CY	A±BEC	
CANOE ACCESS			•	+			•		•			•	•	•
FISHING		•	•	+	•	+	•		•	•	•	•	•	•
HIKING		•	+	•	•	•	+		•		•	•	•	•
HORSE CAMPGROUND							•			A				
HORSE RENTAL														
HORSE TRAILS					•		•			•		•		
HUNTING		•	•		•	+	•		•	•	•	•	+	•
NATURE PRESERVE		•	•			•	•		•	•			•	
PICNICKING		+		+	+	+	+	•	+	+	•	•	+	•
SWIMMING BEACH						+								

*Fee for non-campers

KEY

CAMPING

Class A sites Showers, electricity and vehicular access; \$20/night¹

Class BE sites Electricity and vehicular access; \$18/night

Class BS sites Showers and vehicular access; \$10/night

Class C sites Vehicular access or walk-in w/ shower access; \$8/night

+ Advanced Reservations

~ Accepts Credit Cards

Class D sites Tent camping or primitive sites (walk-in or backpack) with no vehicular access; \$6/night

Class Y sites Youth groups only; \$2/person with minimum daily fee of \$20

Camping rates are subject to change

¹Additional \$10 fee for holiday weekend

± Accessible to visitors with disabilities

BOATING MOTORS

E Electric trolling only

10 10 horsepower limit

15 15 horsepower limit

25 25 horsepower limit

U Unlimited

N Nature preserve nearby

H Historic/archeological site

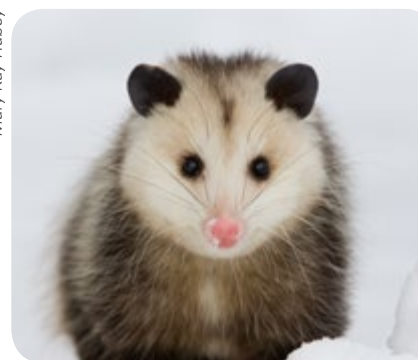
L Lodging/resort

M Mountain bike trail

PC Primitive cabins

LAKE MURPHYSBORO	MERMET LAKE	NEWTON LAKE	PYRAMID	RAMSEY LAKE (PC±)	RED HILLS (PC±)	REND LAKE	SAHARA WOODS	SALINE COUNTY	SAM DALE LAKE	SAM PARR	STEPHEN A. FORBES (PC±)	TEN MILE CREEK	TRAIL OF TEARS	TUNNEL HILL	UNION COUNTY	WAYNE FITZGERRELL
1,024	2,625	6,400	19,000	1,960	967	12,690	4,004	1,270	1,302	1,133	3,100	5,910	5,220	824	6,202	3,300
		•	•	+	+			+	+		+		•	+		+
													•			
					+						+					+
+	•	+	•	+	+		+	+	+	+	+	+	+	+	+	+
•			•	•	+			•	•	+	+					+
											+			+		
•	•	•	•	•	•	•	•	•	•	•	•	•			•	+
+	•	•	•	•	•	•	+	•	•	•	+	•			•	+
10	U	25	10	E	E	U	E/10	10	10	10	U	10			10	U
	•			•	•			•	•		•					+
A±BS±Y			C±DY	A±BEC±DY±	A±CY			C	BE±DY+	BE±CDY	A±BS±CY		C±DY+			A±D±Y
•	•	•	•	•	•			•	•		•	•			•	
+	+	•	•	+	•	•	•	+	•	•	+	+			•	+
•	•	•	•	•	•		•	•	•	•	•	•	•	+		•
			•	C	•			C			BE					
		•	•	•	•			•	•	•	•		•			•
	+	•	•	•	•	•	•	+	•	•	•	•	•		+	•
	•		N	•	•								•			
+	•	+	•	+	+			+	+	•	+	•	+	+		+

Mary Kay Rubey



David C. Olson





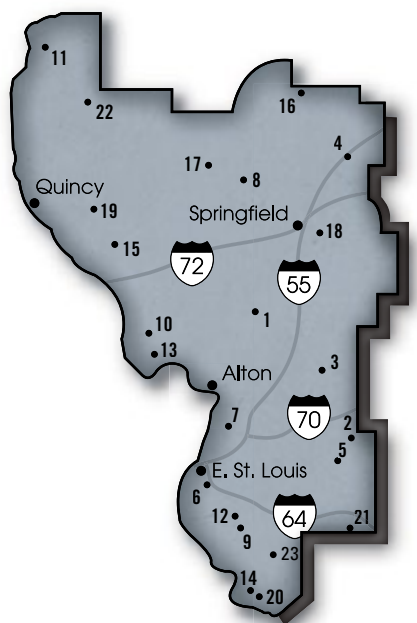
WEST-CENTRAL - ILLINOIS

West-central Illinois is home to some of the largest man-made lakes in the state, including Baldwin and Sangchris. Bordered by the Mississippi River on the west and bisected by the Illinois River, this area is popular among anglers and recreation seekers.

Thousands of visitors are drawn to the historic sites of west-central Illinois, which include Lincoln's New Salem and Springfield landmarks.

Another important site in the area is the Cahokia Mounds near Collinsville, which are the preserved remains of a prehistoric Indian city.

For more information about sites in west-central Illinois, contact Pere Marquette State Park; (618) 786-3323; DNR.PereMarquette@Illinois.gov.



BEAVER DAM STATE PARK (1)

Named for a beaver dam built to form the lake more than a century ago, Beaver Dam State Park is located seven miles southwest of Carlinville in an oak/hickory woodland. The park offers a variety of recreational opportunities on its 750 acres—fishing, picnicking, hiking and camping among the most popular. 14548 Beaver Dam Lane, Plainview 62685; GPS: 39.208424, -89.972904; **(217) 854-8020**.

CARLYLE LAKE STATE FISH & WILDLIFE AREA (2)

As a major stopping point for migrating ducks and geese, this 9,520-acre area offers excellent public waterfowl hunting opportunities. In addition, good hunting for deer, turkey and other upland game species can also be found here. The site is located 10 miles southwest of Vandalia, on the upper end of 26,000-acre Carlyle Lake. 712 North 300th Street, Vandalia 62471; GPS: 38.8106972, -89.212008; **(618) 425-3533**.

COFFEEN LAKE STATE FISH & WILDLIFE AREA (3)

Twenty-two species of fish are found in Coffeen Lake, including bass, white crappie, channel catfish, bullhead, yellow bass, bluegill and carp. This 1,100-acre lake is surrounded by native oak-hickory forests. There are several picnic areas and hiking trails, as well as limited hunting and trapping opportunities. 15084 North Fourth Avenue, Coffeen 62017; GPS: 39.05720, -89.39743; **(217) 537-3351**.

EDWARD R. MADIGAN STATE FISH & WILDLIFE AREA (4)

Native birds and wildlife abound in this picturesque park on the southern edge

of Lincoln in Logan County. Escape to secluded picnic areas and trails or paddle along Salt Creek to discover the park, which also offers dove hunting in September and pheasant and rabbit hunting in late fall. 1366 1010th Avenue, Lincoln 62656; GPS: 40.1147043, -89.4027681; **(217) 732-1552**.

ELDON HAZLET STATE RECREATION AREA (5)

Named after Eldon E. Hazlet—the first president of the Kaskaskia Valley Association and a dedicated Carlyle attorney who worked diligently and tirelessly to make the lake a reality—Eldon Hazlet State Recreation Area offers outdoor opportunities for everyone. The 3,000-acre site is located on the west shore of Carlyle Lake, the largest manmade lake in Illinois. Visitors enjoy camping, sailing, boating, fishing, hunting, picnicking, bird watching and hiking the 9 miles of trails. Various hunting opportunities are available in the park, including a controlled pheasant program, disabled archery hunting and designated public hunting areas. Visit dnr.illinois.gov for a site specific hunter fact sheet.


The Hazlet Cottages, Campground Store and Hazlet public swimming pool are also located in the park. See the "Plan Your Visit" section for more information or call (618) 594-8701. 20100 Hazlet Park Road, Carlyle 62231; GPS: 38.664871, -89.3367; **(618) 594-3015**.

FRANK HOLTEN STATE RECREATION AREA (6)

An urban park surrounded by East St. Louis, Frank Holten is an oasis for recreationists and wildlife. The 1,080 acres feature a championship 18-hole golf course and the Grand Marias Club House, which provides catering for special functions. There also are two

fishing lakes, basketball courts and picnic shelters. 4500 Pocket Road, East St. Louis 62205; GPS: 38.591382, -90.093041; **(618) 874-7920**.

HORSESHOE LAKE STATE PARK (MADISON COUNTY) (7)

Only minutes from St. Louis on Highway 111, Horseshoe Lake offers various hunting programs, camping, fishing, hiking and cross-country skiing. The 2,850-acre park—which includes a natural oxbow-shaped lake—was home to the American Indians who built the nearby Cahokia Mounds. Campgrounds are open May 1 through September 30 only. 3321 Highway 111, Granite City 62040; GPS: 38.690124, -90.091423; **(618) 931-0270**. 

JIM EDGAR PANTHER CREEK STATE FISH & WILDLIFE AREA (8)

This 16,551-acre site is located in Cass County. Approximately a third is wooded and there are 53 miles of trails for horseback riding, hiking, mountain biking and bicycling. Boating is permitted. Camping is available with showers, electricity, water and sewer hookup, and vehicular access. 10149 Highway 11, Chandlerville 62627; GPS: 40.033444, -90.132465; **(217) 452-7741**.

KASKASKIA RIVER STATE FISH WILDLIFE AREA (9)

Totaling more than 20,000 acres, Kaskaskia River State Fish & Wildlife Area is a favorite of recreationists. Located 50 miles southeast of St. Louis, it contains 36 miles of rivers, the 2,018-acre Baldwin Lake and diverse wildlife. 10981 Conservation Road, Baldwin 62217; GPS: 38.2125128, -89.8768396; **(618) 785-2555**.

MISSISSIPPI RIVER STATE FISH WILDLIFE AREA (10)

Consisting of 15 wildlife management and 13 public access areas, the Mississippi River State Fish & Wildlife Area manages the majority of its 24,878 acres to accommodate waterfowl hunting and habitat enhancement. Its headquarters is located on Highway 100, approximately 11 miles north of Grafton. 17836 State Highway 100 North, Grafton 62037; GPS: 39.041421, -90.5555135; **(618) 376-3303**.

NAUVOO STATE PARK (11)

When Mormons settled in the Hancock County community of Commerce City in 1839, they changed its name to Nauvoo, a Hebrew word for "pleasant land." Today, nearby Nauvoo State Park continues to earn the name with a 2-mile timbered nature trail and a 13-acre manmade fishing lake full of largemouth bass, channel catfish and bluegill. The park staff also manages Cedar Glen Natural Area, near Warsaw, which consists of 1,202 acres, mostly used for deer hunting. P.O. Box 426, Nauvoo 62354; GPS: 40.542838, -91.380909; **(217) 453-2512**.

PEABODY RIVER KING STATE FISH & WILDLIFE AREA (12)

Dominated by lakes and ponds, this area is a former coal-mining site located east of New Athens. Its 2,220 acres feature more than 20 fishing lakes and a waterfowl refuge. 8900 New Athens Darmstadt Road, New Athens 62264; GPS: 38.3148265, -89.8481299; **(618) 475-9339**.

PÈRE MARQUETTE STATE PARK (13)

Known as Père, the French word for "Father," missionary Jacques Marquette explored this area with Louis Joliet in 1673, upon reaching the confluence of the Mississippi and Illinois

ivers. Père Marquette State Park, northwest of St. Louis near the Illinois community of Grafton, encompasses 8,050 acres. 13112 Visitor Center Lane, Grafton 62037; GPS: 38.97717, -90.521868; **(618) 786-3323**. 🏹

RANDOLPH COUNTY STATE RECREATION AREA (14)

Amid rolling hills and abundant upland game cover, this area is a hunter's dream, inhabited by quail, deer (archery only), squirrel, dove and rabbit. Bass and channel catfish can be caught in its 69-acre lake. Located five miles north of Chester, the site provides equestrian trails, picnicking and camping facilities. 4301 South Lake Drive, Chester 62233; GPS: 37.9696562, -89.7967889; **(618) 826-2706**. 🏹

RAY NORBUT STATE FISH & WILDLIFE AREA (15)

With nearly 1,100 of its 1,380 acres composed primarily of oak and hickory, this area offers exceptional habitat for deer and squirrel and is good for hunting. In the winter, sightseers often spot bald eagles along the Illinois River. Located just 1.5 miles south of Valley City. RR 1, P.O. Box 55C, Griggsville 62340; GPS: 39.7089361, -90.7245722; **(217) 833-2811**.

SAND RIDGE STATE FOREST (16)

The largest state forest in Illinois, Sand Ridge State Forest has over 7,500 acres of native oak-hickory hardwoods and pines. Just 25 miles southwest of Peoria in Mason County, Sand Ridge supports diverse flora and fauna and a wide variety of recreational opportunities, including camping, hunting, hiking, horseback riding, snowmobiling, bird watching and picnicking. Over 50 miles of marked trails run through the rolling sandy terrain. 25799 East Country Road 2300 North, P.O. Box 111, Forest City 61532; GPS: 40.402492, -89.880918; **(309) 597-2212**.

SANGANOIS STATE FISH & WILDLIFE AREA (17)

A 10,360-acre bottomland environment of sloughs and backwater lakes, Sanganois provides a refuge for migratory waterfowl and a public duck hunting area. Located in southwestern Mason County at the junction of the Sangamon and Illinois rivers, it also offers upland and forest game hunting. 3594 County Road 200 North, Chandlerville 62627; GPS: 40.112214, -90.353966; **(309) 546-2628**.

SANGCHRIS LAKE STATE RECREATION AREA (18)

Nestled in native forests and brimming with a record-setting bass population, the three-fingered lake extends into both Sangamon and Christian counties, earning it the name "Sangchris." It also is a waterfowl, dove, deer and upland game hunting area. 9898 Cascade Road, Rochester 62563; GPS: 39.650112, -89.473515; **(217) 498-9208**.

SILOAM SPRINGS STATE PARK (19)

Siloam Springs offers true natural beauty. The forested terrain is dotted with wildflowers and accented with a sparkling lake, which is popular for activities including hunting, fishing, hiking and nature appreciation. A concession stand with boat and canoe rental operates seasonally. The park is located ten miles south of Clayton off Route 24, or six miles north of Route 104 on County Highway. 938 East 3003rd Lane, Clayton 62324; GPS: 39.890531, -90.934594; **(217) 894-6205**. 🏹

TURKEY BLUFFS STATE FISH & WILDLIFE AREA (20)

Hike, horseback ride and view wildlife at Turkey Bluffs State Fish & Wildlife Area, two miles south of Chester. Hunting for upland game, furbearers and deer is encouraged on the 2,265 acres overlooking the Mississippi River. 4301 South Lake

Drive, Chester 62233; GPS: 37.9723023, -89.8041022; **(618) 826-2706**.

WASHINGTON COUNTY STATE RECREATION AREA (21)

This 248-acre lake, fed by two creeks, is the focal point of Washington County. Located four miles south of Nashville, the recreation area offers several barrier-free facilities, including camping, hunting, picnicking and a fishing pier. Two lakefront cabins are also available for rent. 18500 Conservation Drive, Nashville 62263; GPS: 38.234464, -89.724602; **(618) 327-3137**.

WEINBERG-KING STATE FISH & WILDLIFE AREA (22)

William Creek meanders through Weinberg-King State Park, providing habitat for an abundance of wildlife. Set on 772 acres of rolling terrain, steep hillsides and locust tree forest, Weinberg-King becomes especially popular in winter for its cross-country skiing and snowmobiling. The park is located three miles east of Augusta (and 30 minutes from Macomb) on Highway 101. P.O. Box 203, Augusta 62311; GPS: 40.233474, -90.897673; **(217) 392-2345**. 🏹

WORLD SHOOTING & RECREATIONAL COMPLEX (23)

Located just north of Sparta, this state-of-the-art shooting facility boasts 120 trap fields, two 15-station sporting clay courses, 24 skeet fields, and 12 pistol and rifle shooting bays. Visitors can fish in the complex's three fishing lakes and licenses are sold on-site. The 34,000-square-foot events center houses a 7,000-square-foot main event room, conference rooms, full-service restaurant and gift shop. The Complex also offers 1,001 campsites. GPS: 38.190264, -89.757096; **(618) 295-2700**. 🏹

WEST-CENTRAL ILLINOIS	PARK																								
		BEAVER DAM (PC)	CARLYLE LAKE	COFFEEN LAKE	EDWARD R. MADIGAN	ELDON HAZLET (L, PC±)	FRANK HOLTEN	HORSESHOE LAKE (H)	JIM EDGAR PANTHER (PC)	KASKASKIA RIVER	MISSISSIPPI RIVER	NAUVOO (H)	PEABODY-RIVER KING	PERE MARQUETTE (H, L, PC±)	RANDOLPH COUNTY	RAY NORBUT	SAND RIDGE	SANGANOIS	SANGCHRIS LAKE (PC±)	SILGAM SPRINGS (PC±)	TURKEY BLUFFS	WASHINGTON COUNTY (PC)	WEINBERG-KING	WORLD SHOOTING & RECREATIONAL COMPLEX	
ACREAGE		750	9,520	2,750	751	3,500	1,080	2,854	16,551	20,000	24,878	148	2,220	8,050	1,103	1,380	7,500	10,360	5,280	5,586	2,264	1,440	772	1,600	
CONCESSION		▲				▲		●		▲		▲		▲	▲					▲		▲		▲	
DRINKING WATER		▲		●		▲	●	●	▲	▲		▲		▲	▲		▲	●	●	▲		▲	▲	▲	
HISTORIC STRUCTURE						▲						●		▲		●	●		▲						
RESTAURANT		▲					▲							▲			●			▲				▲	
RESTROOMS		▲		▲		▲	▲	▲	▲	▲		▲	●	▲	▲		●		▲	▲		▲	▲	●	
SANITARY DUMP STATION*		●				▲		●	▲			●		▲	●		●	●	●	♂		▲	▲	●	
VISITOR CENTER 👤 With Interpretive Staff														▲											
BIKE TRAILS					●				●					●											
BOATING		▲		▲		●	●	▲	▲	▲	●	●	●	●	●			●	●	●		●		●	
BOAT LAUNCHING RAMP		●	●	▲		▲	●	▲	▲	▲	●	●	●	●	▲			●	●	▲		●		●	
BOAT MOTORS		E	25	U	10	50	E/10	U	U	U	E	10	U	10			U	25	E		10		E/10		
BOAT RENTALS		●																		●					
CAMPING (See key for camp site type) 🐾 Canoe camping 🐾 Horse camping		A BS Y				A C PC Y +	C Y +	A ▲ AA + ~				A BS Y		A BS Y +	C BE (A) DY 🐾	C DY 🐾			A BS C Y 🐾	A BS D +	A C Y	BE C DY	AA A BE Y ~		
CANOE ACCESS/RENTAL (R)		●		●	●		●	●	●	●	●	●	●	●	●	●		●	●	●	R	●		●	
FISHING		▲	●	●	●	▲	●	▲	▲	▲	●	●	●	▲	●			●	●	▲	●	▲	▲	●	
HIKING		●	●	●	●	▲		●	●	▲		●	●	●	●		●	●	●		●	●	●	●	
HORSE CAMPGROUND									▲						●		●		●	●			▲		
HORSE RENTAL														▲											
HORSE TRAILS									●	●				●	●				●	●	●		●	●	
HUNTING		●	●	●	●		●	●	▲	▲	●		●	▲	▲	●	●	●	●	●	●	●	●	●	
NATURE PRESERVE							N			●		N		●	N	●	●	N	N	N	N	●			
PICNICKING		●		●	▲	▲	▲	▲	▲	▲	▲	▲	●	▲	▲		▲	●	●	▲		▲	▲		
SWIMMING BEACH																									

*Fee for non-campers

KEY

CAMPING

Class AA sites Showers, electricity, sewer and water, vehicular access; \$25/night¹

Class A sites Showers, electricity and vehicular access; \$20/night¹

Class BE sites Electricity and vehicular access; \$18/night

Class BS sites Showers and vehicular access; \$10/night

Class C sites Vehicular access or walk-in w/ shower access; \$8/night

Class D sites Tent camping or primitive sites (walk-in or backpack) with no vehicular access; \$6/night

Class Y sites Youth groups only; \$2/person with minimum daily fee of \$20

+ Advanced Reservations

~ Accepts Credit Cards

Camping rates are subject to change

¹Additional \$10 fee for holiday weekend

BOATING MOTORS

E Electric trolling only

10 10 horsepower limit

15 15 horsepower limit

25 25 horsepower limit

U Unlimited

▲ Accessible to visitors with disabilities

N Nature preserve nearby

H Historic/archeological site

L Lodging/resort

PC Primitive cabins



ILLINOIS STATE MUSEUM

Visit the Illinois State Museum (ISM) and see the worlds of art and nature unfold. The main facility is in Springfield, and the museum operates three other facilities around the state. For more information, visit illinoisstatemuseum.org. ▲

ISM-SPRINGFIELD (WEST-CENTRAL)

Visitors to the Illinois State Museum are treated to world-renowned, interactive exhibits, and engaging educational programs and special events. Adults and children alike will enjoy traveling back in time to the days when Illinois was covered by a shallow, tropical sea or Ice Age behemoths roamed the glacial expanses, as well as learning about 12,000 years of Illinois' human history. Rotating art exhibitions demonstrate the rich tradition of the both decorative and fine art within Illinois. Children will especially love the Mary Ann MacLean Play Museum where they can join the Museum staff—excavating fossils, collecting specimens, and creating exhibits—through the power of imagination and free play. This museum truly is a Springfield gem. 502 South Spring Street, Springfield, IL 62706; (217) 782-7386. Open Monday to Saturday, 9:00 a.m. to 4:30 p.m.; Sundays, 12:00 to 4:30 p.m.

ISM-DICKSON MOUNDS MUSEUM, LEWISTOWN (NORTHWEST)

This National Register Historic Site is one of the major on-site archaeological museums in the United States. It offers a unique opportunity to explore the world of the American Indian in an awe inspiring journey through 12,000 years of human experience in the Illinois River Valley. Visitors to the museum encounter innovative interpretive

exhibits; exciting hands-on activities; archaeological sites; and a variety of special events. The nearby, restored wetlands at the Emiquon Preserve and Emiquon National Wildlife Refuge provide an opportunity to see ancient land and waterscapes. 10956 North Dickson Mounds Road, Lewistown, IL 61542; (309) 547-3721; Open daily, 8:30 a.m. to 5:00 p.m.

ISM-LOCKPORT GALLERY, LOCKPORT (NORTHEAST)

Enjoy changing exhibitions of art created by past and contemporary Illinois artists and artisans. Paintings, drawings, sculptures, quilts, and other decorative and ethnographic arts are showcased in rotating, theme-based exhibitions augmented by interpretive materials. The exhibitions are given an added dimension through educational events, group tours, and outreach activities for both children and adults. Norton Building, along the Illinois & Michigan Canal, 201 West 10th Street, 1st Floor, Lockport, IL 60441; (815) 838-7400; Open Monday to Friday, 9 a.m. to 5 p.m.; Sundays, 12 p.m. to 5 p.m. Closed Saturdays, holidays and during exhibition changes.

IDNR



Explore the history and culture of Illinois' native people at the ISM-Dickson Mounds Museum.



PRESERVATION

Working together with both residents and visitors, the Department of Natural Resources (DNR) strives to protect the state's diverse wildlife and scenic beauty for present and future generations to enjoy.

FORESTRY & NATURE PRESERVES

The state's forests, which comprise 12 percent of Illinois' land area, provide habitat to wildlife and more than 250 species of trees. Since most of the population lives in urban areas, the benefits of urban forests—temperature modification, energy conservation, abatement of air, water and noise pollution—have become increasingly valuable to the state of Illinois.

The Illinois Nature Preserves System, the oldest such system in the nation, comprises 513 sites encompassing more than 94,133 acres of registered land and water and allowing public access (at owner's discretion) to prairies, forests, marshes, swamps, fens and savannas.

DIVISION OF NATURAL HERITAGE (DNH)

The Division of Natural Heritage coordinates conservation efforts aimed at protecting some of the state's rarest natural resources. It works in partnership with the Illinois Nature Preserves Commission to implement monitoring and recovery efforts for imperiled natural communities.



ILLINOIS CONSERVATION FOUNDATION

The **Illinois Conservation Foundation (ICF)** inspires today's youth—tomorrow's leaders—by providing quality outdoor education and programs that instill interest in conservation, ecology and sustainability. As a private charitable organization, the ICF is dedicated to providing future generations opportunities to experience and learn the value of our state's natural resources.

As an independent 501(c)(3) charity, the ICF does not receive taxpayer funds and is supported entirely through private donations. Created in 1994 on the recommendation of the **Conservation Congress**, the ICF has administered more than \$30 million in federal, private and conservation organization grants and has assisted in executing private land donations to the IDNR. The charity also provides an avenue for funding of statewide conservation efforts, youth outdoor educational activities, scholar-

ships and other additional projects to inspire our next generation of conservation leaders.

In 2010, the Torstenson Family made a generous gift to the ICF of 750 acres near Rockford. This property features conservation education activities for children and families, tailored specifically for each visitor. There is a Learning Center for classroom activities, a fishing pond, camping areas, a shooting range for hunter safety, and much more. Programs can also be taken into the community thanks to the Torstenson Education Station, a 20-foot trailer accommodating nearly all educational programs provided at the property.

For more information, to book the property or trailer, or to make a tax-deductible gift to support activities that share these great lessons with youth in Illinois, please visit ilcf.org or call (217) 785-2003.



Arches National Park

Two National Parks... ...One Extraordinary Destination!

Visit the only Utah destination where you can experience two of **The Mighty 5®** National Parks from one convenient location. Visitors from around the world come to the town of Moab to experience sunrise over the towering depths of Canyonlands National Park and then follow it up with sunset in the otherworldly red rock landscape of Arches National Park. Moab's year-round access to thousands of square miles of amazing red rock landscapes, along with the cool waters of the Colorado River, has made it one of the most sought-after outdoor recreation destinations in the American Southwest.



Put yourself in the picture and start planning your visit today!

For a FREE travel planner call 435-259-8825 or visit discovermoab.com

Canyonlands National Park




MOAB
Where Adventure Begins

LIFE
UTAH
ELEVATED



PHOTOGRAPHY

The ecosystems of America's national and state parks and public lands are among the most diverse on the planet—from the wetlands of the Everglades to the temperate rain forests of Olympic National Park and the deserts of Death Valley to the mountains of Yellowstone and Grand Teton. For both aspiring and experienced photographers, the goal of any trip to a national park is to capture its endemic wildlife.

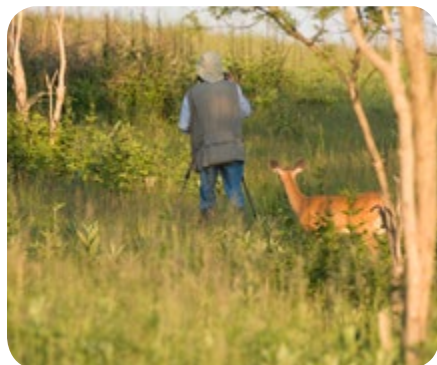
Taking photographs of animals presents a unique set of challenges. Landscapes cooperate; wildlife does not. Not only are animals likely to react to a photographer's presence, but they are also driven by their own instincts and behavior, which can make capturing them difficult. The tips below will help you compose better wildlife images of all creatures great and small—from the bison to the tiniest hummingbird and everything in between.

- **Use a tripod.** If you are using a large telephoto lens, consider investing in a gimbal head, which will make it easier to track your subject.
- **Know your subject.** Before you take out your camera, understand your subject's

behavior so that you can be prepared for what it will do next.

- **The eyes have it.** Capturing your subject's eyes will lead the viewer into the picture and make your image more impactful. Always keep the eyes in focus and try to place them in the power points (the intersection of rule of third guidelines).
- **Keep a safe distance.** You'll want to keep a minimum of 25 yards between you and your subject and more than 75 yards for larger predators. That means that you'll need a big telephoto lens if you want to get up close and personal.
- **Shoot in burst mode.** Instead of taking a single frame, increase the probability that you'll capture the behavior, head position or angle by capturing multiple frames.
- **Be prepared.** Wildlife, and particularly birds, move quickly and without provocation. Practice your panning skills to better catch birds when they alight.
- **Timing is everything.** The best time to photograph wildlife is during the golden hours—at dusk and dawn—when the light is soft and less likely to cast harsh shadows across your subject's face.
- **Keep it simple.** The easiest way to draw attention to your subject is to use a simple background. Use a shallow depth of field to blur any distracting backgrounds.
- **Aim for the action.** Make your image more compelling by capturing your subject exhibiting its natural behavior—flying, hunting, eating or caring for young.

The best way to take better photographs is to practice, and you don't need to go far. Buy a bird feeder and build a studio in your backyard, where you'll be able to create your own version of *A Star(ling) is Born*.



JPecha/iStock

Don't miss your shot! Be aware of your surroundings.

METROPOLIS ILLINOIS
"Home of Superman"

GIANT SUPERMAN STATUE

HORNER'S

FORT MASSAC STATE PARK

THE SUPER MUSEUM

FROM **SUPERMAN**, TO **VEGAS-STYLE GAMING**, TO A DAY BIKING THE **SHAWNEE NATIONAL FOREST AT ILLINOIS' FIRST STATE PARK**, METROPOLIS HAS SOMETHING FOR EVERYONE. MAKE YOUR PLANS TO VISIT DURING ONE OF OUR WORLD FAMOUS EVENTS OR DURING THE ONCE IN A LIFETIME **GREAT AMERICAN ECLIPSE**.

ADVENTURE BEGINS IN METROPOLIS!

(888)-525-5025
WWW.METROPOLISTOURISM.COM/2017

The Great American Solar Eclipse
METROPOLIS ILLINOIS

AUGUST 21st
2017

"THE SIGHT OF A LIFETIME!"



IF YOU ONLY HAVE A DAY

Illinois State Parks offer an array of outdoor diversions suitable to the day visitor. From biking to hiking, canoeing to picnicking, fishing to tossing the ball around, the Land of Lincoln yields an array of recreational activities—regardless your length of stay.

NORTHWEST REGION

Part of **Prophetstown State Recreation Area**, Wa-bo-kie-shiek nature trail follows the edge of Coon Creek for approximately a third of a mile. It provides access for anglers while also offering a scenic stroll for hikers.

Among **White Pines Forest State Park**'s most interesting features are the concrete fords that span the creeks, enabling visitors to drive through the flowing streams, with an accessible path leading to the stream bank for wildlife watching and fishing.

NORTHEAST REGION

The shallow river water and rocks at **Kankakee River State Park** are no match for canoeists. Bring your canoe or rent locally and enjoy the beautiful scenery.

Channahon State Park is a great starting point for a day bicycling or hiking on the **I & M Canal Trail**. Sixty-one miles of trail along the old canal towpath grant access to unparalleled scenic and historic sights.

EAST-CENTRAL REGION

During the milder seasons, visit **Weldon Springs State Park** to fish, boat, picnic, camp, hike and watch wildlife. Or you might want to pitch horseshoes at the park's tournament-quality horseshoe pits.

Have a ball at **Fox Ridge State Park** by taking advantage of its baseball diamonds

and volleyball courts. Or explore the horse trail and nine hiking trails.

WEST-CENTRAL REGION

Ray Norbut State Fish & Wildlife Area provides exceptional habitat for a wide range of harvestable, non-harvestable, uncommon, threatened or endangered plants and animals. Examples are the bald eagle, a winter resident of the wooded bluffs, and the jeweled shooting star, a rare pre-glacial relict wildflower species.

Gear up for great fishing at **Peabody River King State Fish & Wildlife Area**, which boasts more than 20 fishing lakes and a waterfowl refuge.

SOUTH REGION

A beautiful 200-foot sand beach is located at **Stephen A. Forbes State Recreation Area**'s Rocky Point, where visitors can enjoy a day swimming and picnicking at provided tables.

Check out **Pyramid State Recreation Area** and enjoy numerous hills, lakes and ponds for wildlife viewing. With 16.5 miles of foot, horse and mountain bike trails, there's plenty to keep everyone occupied.

PHOTO OP!



Send us your stories and photos and you could be a part of our guide! Be a part of the Oh, Ranger! world!



CASIO

Smart Outdoor Watch

PRO TREK Smart androidwear

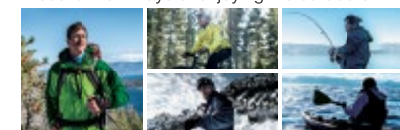


WSD-F20

GPS + FULL-COLOR MAP



Discover new ways of enjoying the outdoors



1 Built-in low-power GPS 1 Full-color map display for offline use 1 Dual-layer LCD 1 Bluetooth® connection 1 50-meter water-resistant structure* 1 Military Standard compliance* 1 Android Wear™ APP 1

*1 Original Casio criteria *2 *Drop: Tested in conformance with MIL-STD-810G Method 516.7 Procedure IV. *Random Vibration: Tested in conformance with MIL-STD-810G Method 514.7 Procedure I. *Humidity: Tested in conformance with MIL-STD-810G Method 507.6 Procedure II. *Solar Radiation: Tested in conformance with MIL-STD-810G Method 505.6 Procedure II. *Non-Operating Altitude: Tested in conformance with MIL-STD-810G Method 501.6 Procedure I. *Operating Altitude: Tested in conformance with MIL-STD-810G Method 502.6 Procedure I. *Non-Operating High Temperature: Tested in conformance with MIL-STD-810G Method 501.6 Procedure I. *Non-Operating Low Temperature: Tested in conformance with MIL-STD-810G Method 502.6 Procedure I. *Temperature Shock: Tested in conformance with MIL-STD-810G Method 503.6 Procedure I-C. *Ice Freezing Rain: Tested in conformance with MIL-STD-810G Method 521.4 Procedure I. (The performance of this instrument has been confirmed under various test environments, but its operation in actual use is not guaranteed for every environment. Freedom from breakage or failure can also not be guaranteed.) *This product conforms to the JIS C 61000-3-2 harmonic electrical current standard. *This product is in conformity with or certified to the Radio Law, Telecommunications Business Law and VCCI. *The screen design shown is correct at the time of development. Actual design may vary. *The final specifications may differ from those shown. *Bluetooth® and Bluetooth SIG are registered trademarks. *Wi-Fi are Wi-Fi Alliance registered trademarks. *Android, Android Wear and other terms are trademarks of Google Inc. *Other service and product names are, in general, trademarks or registered trademarks of the companies concerned.



protrek.casio.com

CASIO ©2017 CASIO AMERICA, INC.

Jeep®

FREEDOM

IN EVERY DIRECTION

THE ALL NEW 2017 COMPASS



© 2017 FCA US LLC. All Rights Reserved.
Jeep is a registered trademark of FCA US LLC.

*The All-New 2017 Jeep Compass Limited.
With a highway fuel economy that's best in its class,
the freedom to explore all of America's best parks is yours.*

Jeep is proud to be a founding member of Tread Lightly!

treadlightly!®

ON LAND AND WATER

