

COMPLIMENTARY ~~\$2.95~~

2017/2018

Oh, Ranger!®

YOUR COMPLETE GUIDE TO THE PARKS

DEATH VALLEY NATIONAL PARK

ACTIVITIES • SIGHTSEEING • DINING • LODGING
TRAILS • HISTORY • MAPS • MORE

INCLUDES THE DESERT
PARKS OF SOUTHERN
CALIFORNIA

OFFICIAL
PARTNERS



JOURNEY *Further*

This summer, Yamaha launches a new Star motorcycle designed to help you journey further...than you ever thought possible.

To see the road ahead, visit

YamahaMotorsports.com/Journey-Further



Some motorcycles shown with custom parts, accessories, paint and bodywork. Dress properly for your ride with a helmet, eye protection, long sleeves, long pants, gloves and boots. Yamaha and the Motorcycle Safety Foundation encourage you to ride safely and respect the environment. For further information regarding the MSF course, please call 1-800-446-9227. Do not drink and ride. It is illegal and dangerous. ©2017 Yamaha Motor Corporation, U.S.A. All rights reserved.





WELCOME

In 1994, Death Valley National Monument was expanded by 1.3 million acres and redesignated a national park by the California Desert Protection Act. The largest national park below Alaska, this designation helped focus protection on one of the most iconic landscapes in the world.

Death Valley is renowned for its colorful and complex geology. Its extremes of elevation support a great diversity of life and provide a natural geologic museum. This region is the ancestral homeland of the Timbisha Shoshone Tribe. The Timbisha established a life in concert with nature.

Ninety-one percent of the park is designated wilderness, providing unique opportunities for solitude, primitive adventure and uninterrupted views, though with extreme conditions.

The Furnace Creek Visitor Center is a great place to ask about the many historic properties in the park.

This guide to Death Valley is provided by Death Valley Lodging Company, Xanterra Parks & Resorts® and American Park Network, and aims to foster an appreciation and respect for the park, while also providing information needed to make your visit smooth and enjoyable. The National Park Service is charged with preserving this country's national spirit and we recruit you to help care for the places saved by the American people so that all may experience our heritage for many years

FUN FACTS

Established: Death Valley became a national monument in 1933 and is famed for being the hottest, lowest and driest location in the country. The parched landscape rises into snow-capped mountains and is home to the Timbisha Shoshone people.

Land Area: The park's 3.4 million acres stretch across two states, California and Nevada.

Highest Elevation: The top of Telescope Peak is 11,049 feet high. The lowest is -282 feet at Badwater Basin.

Plants and Animals: Death Valley is home to 51 mammal species, 307 bird species, 36 reptile species, two amphibian species and five fish species. In a place with little water, smaller species tend to thrive over larger ones.

Popular Activities: Visitors can take a self-guided hike, go backpacking, birdwatching and rent a Jeep to explore the backcountry.

Bicycling: Bikes are allowed on all park roads that are open to public traffic.

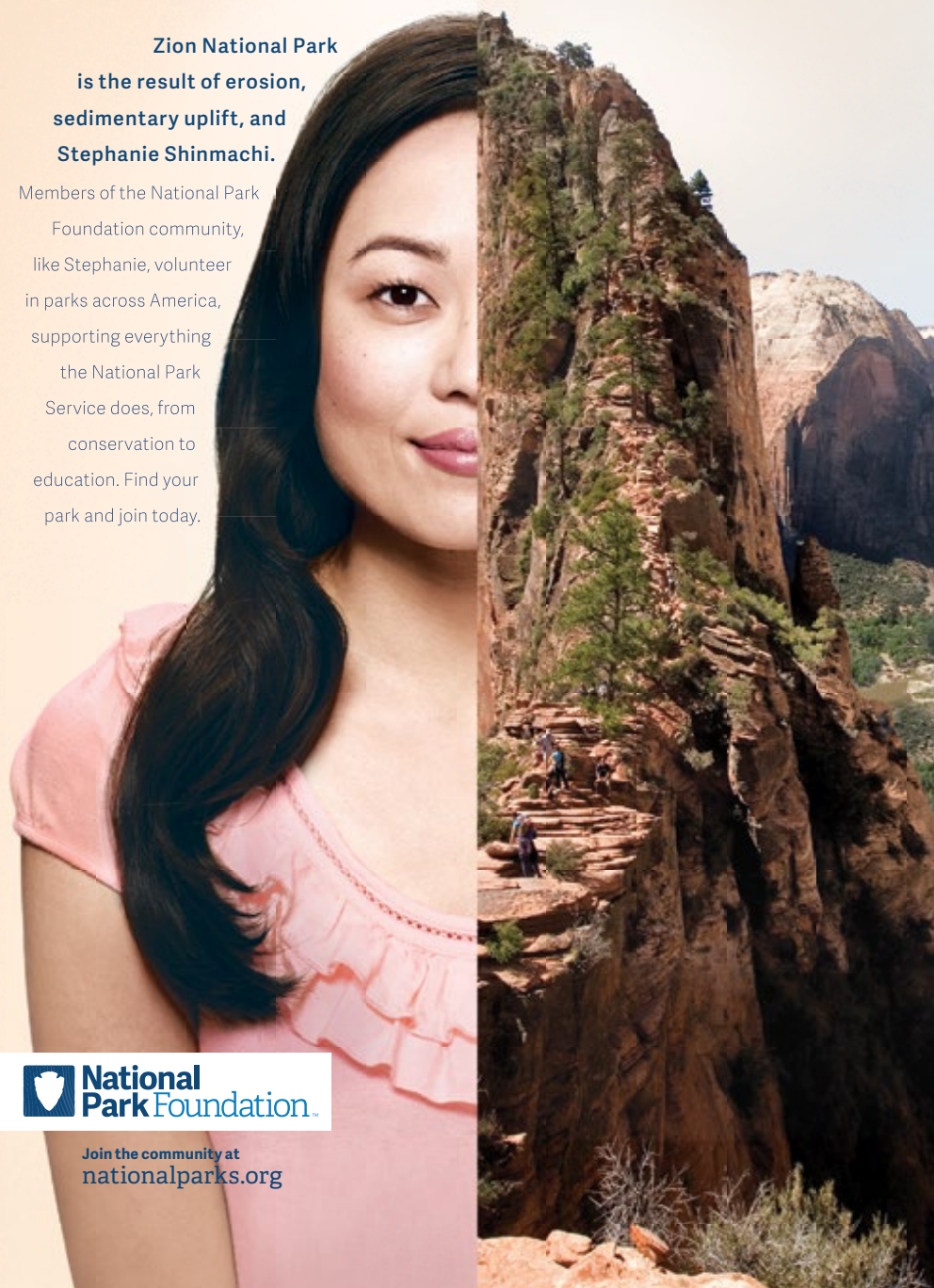
Hiking: Constructed trails are rare in the park. There are 12 popular routes and three additional self-guided trails (see the Walking and Hiking chapter).

Camping: There are nine main established campgrounds run by the park. Many of the 800-plus miles of backcountry dirt roads are open to camping

Lodging: The Stovepipe Wells Lodging Company, Panamint Springs Resort and Xanterra Parks & Resorts offer multiple hotel options in the park.

Zion National Park is the result of erosion, sedimentary uplift, and Stephanie Shinmachi.

Members of the National Park Foundation community, like Stephanie, volunteer in parks across America, supporting everything the National Park Service does, from conservation to education. Find your park and join today.



Oh, Ranger!®

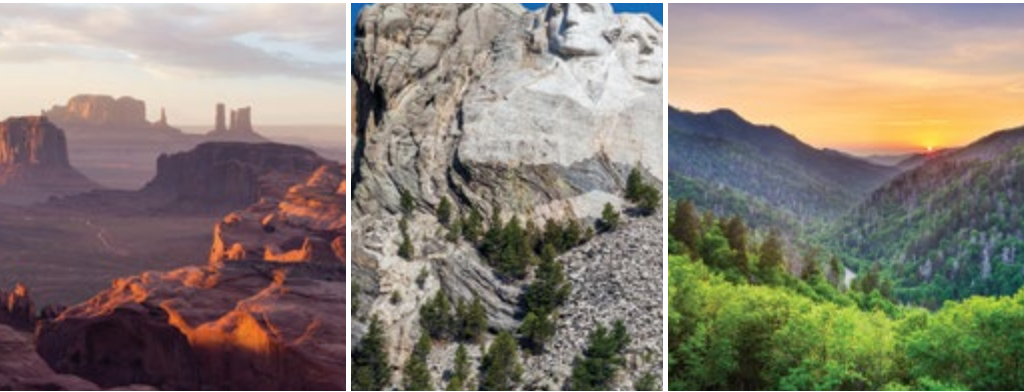
GET THE APP!

IT'S FREE! DOWNLOAD NOW



National Park Foundation

Join the community at nationalparks.org



Savings can take you to *amazing* sights.



GEICO for your RV

geico.com | 1-877-434-2678 | Local Office

Some discounts, coverages, payment plans and features are not available in all states or all GEICO companies. GEICO is a registered service mark of Government Employees Insurance Company, Washington, D.C. 20076; a Berkshire Hathaway Inc. subsidiary. © 2017 GEICO



CONTENTS



American Park Network® publishes OhRanger.com, Oh, Ranger! ParkFinder™ and Oh, Ranger!@ guides—a collection of visitor guides for public lands all across America. American Park Network is an official partner of the National Forest Foundation, National Parks Conservation Association, National Fish and Wildlife Foundation, American Hiking Society and the Student Conservation Association.

Publisher & Editor-in-Chief
MARK J. SAFERSTEIN

Associate Publisher & Executive Editor
Joel S. Saferstein

Group Sales & Partnerships Director
Alex Frenkel

EDITORIAL / PRODUCTION

Managing Editor: Kate Morgan
Editors: Nell Alk, Monette A. Bailey,
Scott Deckman, Cinnamon Janzer, Julie McCool,
Renee Sklarew, Andy M. Smith
Proofreader: Shannon Kronstadt
Graphic Designers: Mario Arce, Dennisse Cruz,
Mike Dion, Yamileth Racinos, Tatiana Hurtado

DIGITAL

Technology Managers: Scott Falconer, Josh Eckstein

ADVERTISING SALES & MARKETING
(212) 581-3380

adsales@americanparknetwork.com
Business Development: Sharon Burson,
Randy Burton, Mary Pat Kaleth, Pat Keane,
Craig King, Kristi Rummel
Operations Manager: Matthew Price

American Park Network
41 East 11th Street, 11th Floor, NY, NY 10003



©2017 APN MEDIA, LLC · All Rights Reserved

Oh, Ranger! and American Park Network are registered trademarks of APN Media, LLC.



The publisher of this guide and the advertisers herein are not affiliated with, or endorsed by, the National Park Service.

FOR MORE INFORMATION

Distribution requests
distribution@americanparknetwork.com

Oh, Ranger! Wi-Fi™ installation/sponsorship
wifi@americanparknetwork.com

	Welcome	2
	What's New!	6
	At A Glance	8
	Plan Your Visit	11
	Important Numbers	12
	Park Regulations & Safety	18
	Who's Who at the Park	20
	Preservation	21
	Sights To See	22
	History & Culture	29
	Centerfold Map	
	Nature & Wildlife	32
	Things To Do	35
	Lodging & Dining	38
	Walking & Hiking	41
	Camping	45
	Manzanar NHS	47
	Joshua Tree National Park	48
	Mojave National Preserve	50
	Photography	52
	Just for Kids	54
	If You Only Have a Day	56

Cover: The stars shine over Zabriskie Point in Death Valley National Park. Adventure_Photo/iStock.

For answers to all your questions, go to **OhRanger.com**



WHAT'S NEW! WHY PARKS MATTER

“There is nothing so American as
our national parks.”

– Franklin Delano Roosevelt

Access to parks is one of the things that's truly great about life in America. Not just national parks, like FDR stated, but *all* parks. Parks afford everyone, regardless of race, income, social status or age, the opportunity to escape the concrete jungle and step into the wild. It doesn't matter whether it's a small step into a local park or a giant leap into the backcountry. The effect is the same. Time in nature feels good. Other values that parks bring may be less obvious. Since we take care of the things we value, I'd like to highlight a few other benefits we all receive from public lands:

Economic Impact America's federal, state and local parks and public lands generate \$200 billion in annual economic activity and support more than one million jobs! You might help a dozen businesses during a weekend hiking trip. Imagine the impact of a week-long national park adventure. Parks raise property values, too!

Conservation Trees produce the oxygen we need to survive, but did you know that they also help save money? It's estimated that trees in cities save \$400 billion in costs to retain stormwater. A single tree can store 100 gallons or more, which helps keep streets from flooding and reduces the need for artificial storage facilities. A tree can also absorb as much as three tons of carbon gas during its lifetime.



Mark, Joel & Alex – Support parks, stay healthy!

Take a deep breath in a park and you'll immediately know the value of greenspace.

Health & Wellness Studies show a high correlation between time spent in parks and improved health (and, in my view, happiness). You move more when you're outside, which decreases stress, makes you more fit and reduces the risk of many health issues, such as diabetes, high blood pressure and heart disease. Exercise (which parks inspire) also positively impacts your cholesterol levels. A few years ago, I started bicycling to work every day. A year later, my overall cholesterol went down while my HDL—the “good” cholesterol—went up. The results of a small change in your exercise routine can be amazing! Parks invite this change.

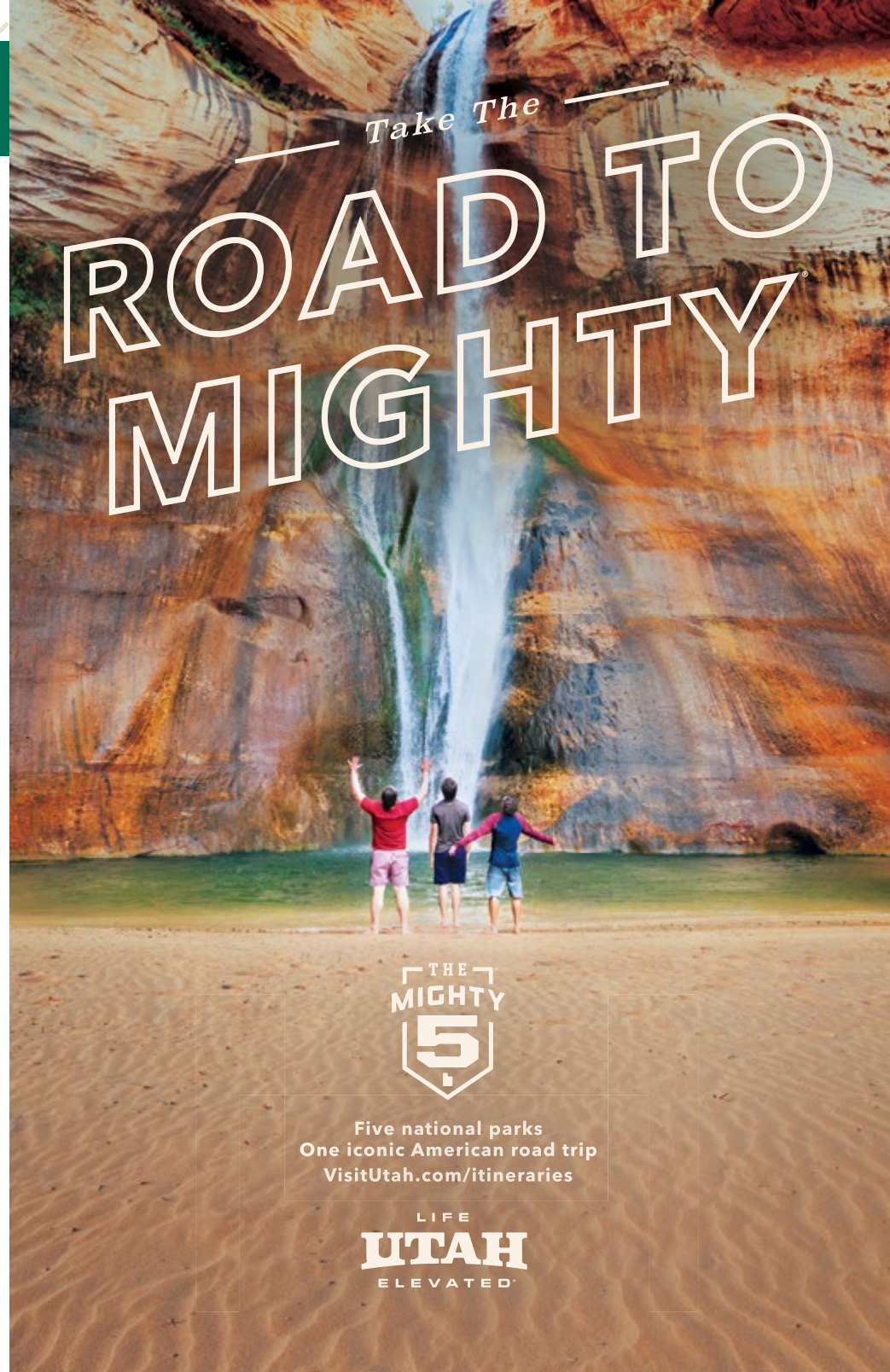
The value of parks is undeniable, so follow FDR's lead and support our public lands. It's the all-American thing to do. (Congress, take note!) You'll save the country money while improving our nation's health—and your own, too. Not a bad combination!

mark@americanparknetwork.com



GET CONNECTED AT YOUR FAVORITE PARKS!

Parks are about enjoying nature, but what if you want to share a great picture or are awaiting an important email? If you're looking to add connectivity to your park, or if you already have Wi-Fi and would like help adding content or generating sponsor revenues, please let us know at wifi@americanparknetwork.com.



Take The
**ROAD TO
MIGHTY**



Five national parks
One iconic American road trip
VisitUtah.com/itineraries

LIFE
UTAH
ELEVATED™



AT A GLANCE

Death Valley is the largest national park in the contiguous United States at nearly 3.4 million acres. The valley is bound on the west by the towering 11,049-foot **Telescope Peak**, and on the east by the 5,475-foot **Dante's View**. This fabled park features spectacular desert scenery, unusual wildlife and a rich human history. Also something for the record books: The Badwater Basin salt pan, at 282 feet below sea level, is the lowest point in North America.

A DIVERSE ECOSYSTEM

Death Valley National Park is open all year, but since summer temperatures frequently soar above 120°F (48.8° C), winter visits, November through April, are strongly en-

couraged. In fact, in 1913, **Furnace Creek** recorded a temperature of 134°F (56.6°C), the hottest temperature ever recorded in the world.

While most visitors come to Death Valley National Park to experience desert desolation and walk on North America's lowest point, the park also boasts a sparse, but thriving ecosystem. Careful examination will reveal that this seemingly barren landscape is home to a variety of remarkable plants and animals, a natural world that has adapted successfully to a land of brutal environmental extremes. In Death Valley, you will find—among other species—drought-resistant **desert holly**, stands of salt-resistant **pickleweed** and tiny **pupfish** that flourish in salt-encrusted streams.



The peak of Dante's View offers a sweeping vista of Death Valley below.

adifferentbrian

MIRAI

FUELED BY HYDROGEN AND INNOVATION.



WHITE CA CARPOOL STICKER ELIGIBLE

EPA-ESTIMATED 312-MILE RANGE¹

CALIFORNIA ZERO EMISSION VEHICLE

UP TO 3 YEARS* WORTH OF COMPLIMENTARY FUEL²



\$349/MO FOR 36 MONTHS³ \$2,499 DUE AT LEASE SIGNING

12,000 mile/year limit. Excludes official fees, taxes and dealer charges. No security deposit required.



THE HYDROGEN-FUELED TOYOTA MIRAI. ITS ONLY EMISSION IS WATER.
AVAILABLE NOW ON TOYOTA.COM/MIRAI

1. Actual mileage will vary. Range measurement pursuant to SAE J2601 standards (ambient temperature: 20°C; hydrogen tank pressure when fueled: 70 MPa). 2. Complimentary fuel for three years or \$15,000 maximum, whichever comes first. 3. Available only on approved credit to qualified applicants through participating Toyota dealers and Toyota Financial Services on new 2017 Mirai. Mirai offer based on MSRP of \$58,385 including handling and 12,000 miles/year limit. Monthly payment may vary depending on final negotiated price of vehicle and other amounts you qualify to finance, and your credit qualifications. See dealer for vehicle and lease program details. Offer only available in CA, while supplies last, for customers residing in CA within close proximity of an operating hydrogen station. Must take delivery by 8/31/17. Terms are subject to change or termination at any time. Toyota Financial Services is a service mark of Toyota Motor Credit Corporation (TMCC). ©2017 Toyota Motor Sales, U.S.A., Inc.

EARLY RESIDENTS

Anthropologists estimate that roaming humans first settled in Death Valley roughly 10,000 years ago. These early residents were hunters, and judging by the size of their tools, they hunted big game. Over 1,000 years ago, the Timbisha Shoshone lived along the edge of a 30-foot-deep lake, hunting smaller game and gathering seeds. In 1849, a group of **gold rush pioneers** entered the valley, thinking it was a shortcut to California. After barely surviving the trek across the area, these pioneers named the spot “Death Valley.”

In the late 1880s, native peoples were increasingly pushed out of the area by mining companies who sought the riches of gold, silver and borax within the valley’s parched hills. Most of Death Valley’s mining operations failed within a few years of opening, leaving eerie ghost towns and crumbling mines in their wake. Despite briefly successful borax mines that used the famed “**20-mule teams**,” low yields and a tumbling economy caused the industry to dwindle. By 1910, most mining operations had ceased.

Today, it is the uncompromising severity and extraordinary geology of the desert that continues to draw visitors to Death Valley. Within the park, you will find some of the most surreal landscapes on the globe, including sinuous sand dunes that ripple into the horizon, shimmering white salt flats, intricately contoured badlands carved by rushing water, striking copper-colored canyon walls, and even a massive hydrovolcanic blast crater. You can enjoy all these sights from the window of your automobile, or if you’re more adventurous, get out of your car and explore the park on foot.

NPS HISTORY

Death Valley’s outstanding natural beauty and scientific importance were first brought to the attention of the National Park Service in the 1920s. With the support of **Horace Albright**, Director of the National Park Service, the spot’s national significance was recognized and the area was proclaimed a national monument on February 11, 1933, by President Herbert Hoover. With the passage of the California Desert Protection Act on October 31, 1994, Congress added 1.3 million acres and designated it a national park. Today, Death Valley National Park is made up of nearly 3.4 million acres, 91 percent of which is Congressionally-designated wilderness for visitors to explore.

Park rangers at Death Valley lead a variety of **tour**s that explain the area’s unusual landscape, as well as its colorful history. The park concessioner offers a variety of first-rate services in the valley that include gift shops, a pool, fine dining and more. And, when the rains cooperate, this seemingly barren landscape is transformed into an extraordinary knee-high carpet of **wildflowers**. Death Valley National Park—home to North America’s highest temperatures and lowest point below sea level—offers plenty of adventure and a wealth of diversity.

PHOTO OP!



Send us your stories and photos and you could be a part of our guide! Be a part of the OhRanger! world!





OhRanger



PLAN YOUR VISIT

Here’s a quick rundown of the basics you need to know when planning a visit to Death Valley National Park.

SIZE AND VISITATION

Death Valley National Park is comprised of 3.4 million acres. Visitation is highest from February through mid-April and during the Thanksgiving and Christmas holidays. Visitation is generally lowest in October and January. The park regularly receives over 1 million visitors per year.

ENTRANCE FEES

Death Valley National Park is open every day of the year. Entrance fees vary. For \$25, passengers in noncommercial vehicles (cars, trucks and vans) can leave and re-enter the park as many times as they wish for a seven-day period. The cost for the same seven-day pass per

motorcycle is \$20, and \$12 for those traveling on bicycle or foot. Permanent U.S. residents over 62 may purchase a lifetime Senior Pass for \$10 (admits only one motorcycle). For \$50, frequent visitors may purchase the Death Valley Annual Pass and get unlimited entry of a noncommercial vehicle to the park for one year.

Check nps.gov/deva for up-to-date information. A popular attraction, Scotty’s Castle, was severely damaged in a flood in October of 2015 and has closed as a result. The entire Grapevine Canyon area remains closed to the public, and reopening of the castle is not expected until 2019.

EVERY KID IN A PARK

To help engage and create our next generation of park visitors, supporters and advocates, the Obama Administration, in partnership with the Federal Land Management agencies, launched the Every Kid in



FEDERAL RECREATIONAL LANDS PASSES

A federal recreation pass is helpful if you plan to visit many national parks, forests or other federal lands. For information, call (888) 275-8747 or visit store.usgs.gov/pass.

Type	Cost	Availability	Details
Annual Pass	\$80	General Public	This one-year pass is available on site, by phone or online (see above)
Senior Pass	\$10	U.S. residents age 62+	This lifetime pass is available on site or via mail order. ID required.
Military Pass	Free	U.S. military members and their dependents	This one-year pass is available on site. ID (CAC Card or DoD Form 1173) required.
Access Pass	Free	U.S. residents with permanent disabilities	This lifetime pass is available on site or via mail order. ID and documentation required.
Volunteer Pass	Free	250 cumulative volunteer service hours	Inquire locally to obtain information about this one-year pass.

a Park initiative. The immediate goal is to provide an opportunity for each and every 4th grade student across the country to experience their federal public lands and waters in person.

All kids in the fourth grade have access to their own Every Kid in a Park pass at **Everykidinapark.gov**. This pass admits the pass owner and any accompanying passengers in a private non-commercial vehicle to the park. You can obtain the pass by visiting **everykidinapark.gov** and you must print it and present it at the park. The Every Kid in a Park pass is valid until August 31, 2017.

PERMITS

Permits for commercial filming and other special uses are available at Death Valley National Park. There is a one-time application fee of \$210 and other fees may apply. For further information contact the visitor center at (760) 786-3241.

GETTING TO DEATH VALLEY

Car: Death Valley National Park is transected from east to west by California Highway 190.

On the east in Nevada, U.S. Route 95 parallels the park from north to south with connecting highways at Scotty's Junction

(Nevada State Route 267), Beatty (Nevada State Route 374) and Lathrop Wells (State Route 373). At Lathrop Wells turn on to Nevada State Route 373 and then take California State Highway 190 at Death Valley Junction.

To the south of the park, Interstate 15 passes through Baker, California, on its way from Los Angeles to Las Vegas. State Route 127 travels north from Baker to Shoshone and Death Valley Junction with connections to the park on State Route 178 at Shoshone and California Highway 190 at Death Valley Junction.

Air: The closest major airport is Las Vegas McCarran International Airport, which is 120 miles southeast of the park. Call (702) 261-5211 for flight and rental car information. There is a small airport at Furnace Creek (personal planes only), but it does not have a direct line so please call the park service at (760) 786-2441 or (760) 786-2345 for more information.

Public Transportation: Although there is no public transportation in the park, commercial airlines and interstate buses serve Las Vegas, Nevada. Amtrak and Greyhound service Barstow, California, as well. Cars may be rented in both cities,

but advance reservations are advised, especially in the summer. Guided bus tour trips also depart from Las Vegas. Search online for bus tours.

TRANSPORTATION INSIDE THE PARK

The massive size of Death Valley National Park (about twice the size of the state of Delaware) and the vast distances between its major features make the use of a motor vehicle essential. Be sure your car is in good mechanical condition and that the fuel tank is full before each day's tour. More than 800 miles of roads provide access to wilderness hiking, camping and historical sites, but some are unpaved or four-wheel-drive only.

Within the park, gasoline is sold only at Furnace Creek, Panamint Springs Resort and Stovepipe Wells Village, so plan accordingly. Diesel is available

only at Furnace Creek and Panamint Springs Resort. Carry extra drinking water, especially when hiking. Though not required, when going off-road on approved trails you can register with the Park Service for safety reasons. Note: There are few designated trails in the park, but unlimited hiking.

FURNACE CREEK VISITOR CENTER

The Furnace Creek Visitor Center is the main visitor information source for Death Valley. It provides general information and backcountry camping and hiking information and permits. Park entrance fees are collected here. The Death Valley Natural History Association updates a well-stocked bookstore curated toward the natural and cultural history of the locale. The park features displays about its geology, climate, wildlife and

IMPORTANT NUMBERS	
General Park Information	(760) 786-3200 or nps.gov/deva
Commercial Permits	(760) 786-3241
Lodging within the Park	
Furnace Creek	(760) 786-2345
Stovepipe Wells	(760) 786-2387
Panamint Springs	(775) 482-7680
Camping	(800) 444-6777 or recreation.gov
Emergencies	911

Hello rewards

REWARDS ABOUND

Our best rates, free nights, perks and partner offers at over 1,000 hotels

Canadas Best Value Inn | Americas Best Value Inn | Value Inn Worldwide

rlhco.com/hello rewards

HELLO REWARDS | RLH | RL | RED | RED | WITH INN | BEST VALUE INN | BEST VALUE INN | BEST VALUE INN

©2017 RLH Corporation. All Rights Reserved

CLIMATE



Spondylolithesis/Stock

Death Valley is the hottest and driest place in the United States. A temperature of 134°F, the highest ever recorded in the world, occurred here. The valley receives less than two inches of rain per year.

WHY IS DEATH VALLEY SO DRY?

Winter storms moving inland from the Pacific Ocean must pass over a number of mountain ranges as they travel east. As the clouds rise with the mountains, they cool and the moisture falls as rain or snow on the western side of the mountains.

By the time the clouds reach the mountains' east side, most of the moisture has already been precipitated, leaving a dry "rainshadow." Four major mountain ranges lie between Death Valley and the ocean, each one adding to the intensity of the rainshadow effect. In total, rainfall averages less than two inches per year. During some years, there is no rain at all in the park.

WHY IS DEATH VALLEY SO HOT?

The depth and shape of Death Valley contribute to the hot summer temperatures. The valley is a long, narrow basin 282 feet below sea level, yet walled by high, steep mountain ranges. The clear, dry air and sparse plant life cover allow sunlight to continuously heat the desert

surface. Heat radiates back from the rocks and soil and becomes trapped in the valley's depths. Summer nights provide little relief. Often, overnight lows may only dip to 90°F. Now that's tasty!

Heated air rises, but it is trapped by the high valley walls and is cooled and recycled back down to the valley floor. Those pockets of descending air are only slightly cooler than the surrounding hot air. As they descend, they are compressed and heated even more by low elevation air pressure. These moving masses of super-heated air blow through the valley—creating the extremely high temperatures, and contributing to areas of high wind.

WEATHER FACTS

- The ground temperature can be 80°F hotter than the air temperature. A ground temperature of **201°F** was once measured in Death Valley. Ground temperature on the valley floor is about 40 percent higher than the surrounding air temperature.
- The **lowest temperature** ever recorded on the valley floor was 15°F in 1913.
- Higher elevations are cooler than the low valley. Temperatures drop 3° to 5°F with every 1,000 vertical feet.
- Comfortable clothing that provides ample sun protection—along with a broad-rimmed hat to shield the face—are recommended in the summer months. Make sure to wear a sturdy pair of walking shoes year-round!
- On average, Death Valley is the hottest place in the world. July is characteristically the hottest month with an average temperature of 116°F.

natural history, as well as orientation film *Seeing Death Valley*, narrated by Donald Sutherland; the film is shown every half hour.

The visitor center is located in the Furnace Creek area on California Highway 190—30 miles from Death Valley Junction to the east, and 24 miles from Stovepipe Wells Village to the north and west.

During the winter season (November to March), rangers present a wide variety of walks, talks and evening programs about Death Valley's cultural and natural history. This visitor center is open from 8 a.m to 5 p.m. For more information, call **(760) 786-3200**. Ranger programs are listed at nps.gov/deva.

SCOTTY'S CASTLE VISITOR CENTER

Scotty's Castle, a Spanish-style mansion built in the 1920s that was a favorite among tourists, is currently closed due to severe damage caused by floodwaters in October 2015. A series of powerful storms hit the area throughout October, washing out roads and damaging parts of the castle—worst of all the garage/longshed, which served as a visitor center. The powerful floodwaters moved part of a wall off the foundation and left the Grapevine Canyon area clogged with mud and debris up to 15 feet high in some places. *The castle is not expected to reopen before 2019.*

RANGER STATIONS

Stovepipe Wells Ranger Station: Stovepipe Wells Ranger Station provides general information and backcountry camping and hiking information and permits. Park entrance fees are collected here; there is also a branch outlet of the Death Valley Natural History Association

that provides useful informational books and maps.

Stovepipe Wells is located in the center of Death Valley, 24 miles from the Furnace Creek Resort to the south and 80 miles from Lone Pine, California, on Highway 395. For more information, call (760) 786-2342.

PARK NEWSPAPER

The park newspaper, *Death Valley National Park Visitor Guide*, offers information on camping, hiking, backpacking, events, safety and other park news. Get your free copy at the visitor center to help plan your day at the park.

KIDS

There is plenty for kids to do, including the Junior Ranger program. For more information, please see the "Just for Kids" chapter.

VISITOR SERVICES

Despite Death Valley's fearsome reputation and famously barren landscape, the National Park Service, hotel operators and a number of recreation companies have taken steps to ensure that your trip is as smooth as it is inspiring. The Death Valley infrastructure includes gift shops, outfitters, postal services and all the other necessities that make planning a trip easy.

AUTOMOTIVE SERVICES

There are filling stations at Stovepipe Wells Village (760) 786-2387, The Ranch at Furnace Creek (760) 786-2345, Shoshone Village (760) 852-4335 and Panamint Springs Resort (775) 482-7680, with the latter three stations selling diesel fuel.

BANKING SERVICES

ATMs are located in the general stores of The Ranch at Furnace Creek Resort **(760) 786-2345**, Stovepipe Wells Village **(760) 786-2387**, Shoshone Village **(760) 852-4335** and the Panamint Springs Resort **(775) 482-7680**. For more information, call **(760) 786-2345**.

EMERGENCIES

Call **911** in case of emergency.

FOOD AND SUPPLIES

The Ranch at Furnace Creek **(760) 786-2345**, 7 a.m.–10 p.m.; Shoshone Village **(760) 852-4335**; Panamint Springs Resort **(775) 482-7680**, 7 a.m.–9:30 p.m.; and Stovepipe

Wells Village **(760) 786-2387**, 7 a.m.–10 p.m.; all have general stores with varying degrees of camping supplies and food. Call ahead.

FIRST AID

Call **911** or **(760) 786-2330** for 24-hour ranger dispatch.

GIFT SHOPS

The Inn at Furnace Creek **(760) 786-2345**, Shoshone Village **(760) 852-4335**, Panamint Springs Resort **(775) 482-7680**, Stovepipe Wells Village **(760) 786-2387**, all have gift shops; the Furnace Creek Visitor Center and Museum **(760) 786-3244** does as well.

LAUNDROMAT

There is a 24-hour laundromat on Roadrunner Drive at The Ranch at Furnace Creek.

MEDICAL SERVICES

- Beatty Clinic: Beatty, NV **(775) 553-2208**
- Pahrump Medical Center: Pahrump, NV **(775) 727-6060**
- Death Valley Health Center: Shoshone, CA **(760) 852-4383**
- Southern Inyo Co. Hospital: Lone Pine, CA **(760) 876-5501**

PAY PHONES

Telephones are located at almost all of the park communities, resorts, contact stations, and museums. There are no pay phones at Furnace Creek Resort.

POSTAL SERVICES

The Ranch at Furnace Creek has a post office open Monday through Friday from 8 a.m. to 4 p.m. (closed for lunch from 1–1:30 p.m.). Visitors can also drop off their letters for post at Stovepipe Wells Village. For more information, call **(760) 786-2223**.

RECYCLING

Join the National Park Service, Death Valley Lodging Company, Xanterra Parks & Resorts®, U.S. Postal Service and the Timbisha Shoshone Tribe’s efforts to preserve the environment by recycling.

Be sure to look for bins at the campgrounds, visitor centers, ranger stations and hotel facilities. Recycling, including small propane canisters, helps take tons of items that would otherwise go to the landfill back to the factory for reuse. Help keep the park clean for future generations!

SERVICE STATIONS

Stovepipe Wells Village, Furnace Creek and Panamint Springs Resort sell gas within the park. Always be sure to fuel up before setting out on a trip. Running out of fuel in a remote location where communication is limited can have dire consequences. Opportunities for gas are few and far between in the valley, so be sure to take the opportunity.

SHOWERS

Showers are available for a fee at Stovepipe Wells Village, The Ranch at Furnace Creek and at Shoshone Village (for campers only). Go to the front desk for assistance.

ACCESSIBILITY

Park visitor centers, contact stations and museums are accessible to all visitors. The campgrounds, with the exceptions of Texas Spring and the outlying campgrounds at Wildrose, Thorndike and Mahogany Flat, all have accessible sites and facilities. The grounds at Scotty’s Castle are accesible to all visitors, however, the wheelchair-lift to the upper floor of the main house can only accommodate narrow wheelchairs.



The salt flats of Badwater Basin, at 282 feet below sea level, stretch for nearly 200 square miles.

brewbooks



In the spring, Death Valley explodes with colorful wildflowers.

Remnett Stowe



PARK REGULATIONS & SAFETY

SAFETY TIPS

Water: Death Valley is extremely hot and dry. During the heat of summer, drink at least a gallon of water per day to replace loss from perspiration. Carry extra drinking water in your car and while hiking.

Heat and Dehydration: If you feel dizzy or nauseous or get a headache, get out of the sun immediately and drink plenty of water. Dampen clothing to lower your body temperature. Heat and dehydration can kill.

Hiking: Do not hike in the low elevations when temperatures are hot. The mountains are cooler in summer, but can have snow and ice in winter.

Desert Driving: Stay on paved roads in summer. If your car breaks down, stay with it until help arrives. Be prepared and carry plenty of extra water. Do not depend on GPS devices, as they can show roads that are not open. Always carry up-to-date road

maps and get information from park staff before embarking for the day.

Flash Floods: Avoid canyons during rainstorms and be prepared to move to higher ground if necessary. While driving, be alert for water running in washes and across road dips.

Mine Hazards: STAY OUT—STAY ALIVE! Do not enter mine tunnels or shafts. Mines may be unstable, have hidden shafts, pockets of bad air and poisonous gas.

In Case of Emergency: Dial 911 from any telephone or cell phone.

Note: Cell phones may not work in many parts of the park, so do not depend on them.

Dangerous Animals: Never place your hands or feet where you cannot see first. **Rattlesnakes, scorpions or black widow spiders** may be sheltered in hidden spots. See the "Nature & Wildlife" chapter for more information.

PARK RULES AND REGULATIONS

Overnight Camping: Camping is permitted in developed campgrounds and some backcountry areas. To obtain a permit, visit the Furnace Creek Visitor Center or any ranger station.

Driving off roads: Off-road driving is strictly forbidden to protect the extremely fragile desert ecosystems. Please help keep the park's wilderness free of vehicle tracks.

Fires: Campfires are allowed in fire pits in developed campgrounds. Backcountry fires are prohibited. Gathering wood is against the law. Anything you pack in you must pack out.

Weapons: Firearms regulations vary

by state. Check with the National Park Service or the park you plan to visit before your trip for the most current information.

Pets: Pets are only permitted along roads and in developed areas. Because they may not be safe from predators and can spread disease to wildlife, pets must be leashed and restrained at all times, and pet waste must be removed.

Horses: Horses are not permitted in developed campgrounds or on many of the trails. Travel by horseback is not recommended in mountainous areas where steep terrain does not provide good footing.

Travelers must carry certified weed-free feed.

Metal Detectors: Metal detectors may not be used in the park. The collection of historic objects is prohibited.

Private Property: Please respect all private property in the park.

Wildlife: Do not feed or disturb any of the park's wildlife. When wild animals are fed by humans, they tend to depend on this unnatural food source, rather than forage for their natural diet. Feeding animals also creates nuisance animals and can become a danger to drivers on the highway.



DESERT DRIVING TIPS

We recommend that you remain on paved roads, especially during the summer. If you do venture into the backcountry, heed these important tips:

- **Make sure your car is in good working order.** Service stations are few and far between. Carry a spare tire, a jack, flares and boards to place under the tires in case you hit a sandy trap.
- **Carry plenty of extra water.** Bring at least one gallon per person for each day. It is a good idea to have a two- or three-day stock of water in case of car trouble.
- **Bring a map so you'll always know where you are in the backcountry.** It's smart to carry a topographic map, compass and cell phone as well (although it is unlikely to work outside the Furnace Creek area). Always let someone know where you are going and when you plan to return.
- **Dress for desert success.** Shield yourself from the sun's glare by wearing a hat with a brim and light-colored, lightweight clothes. Make

YaskoCreative/Stock



Bring a map and stay on improved roads. Check weather conditions to avoid washouts.

sure to pack a blanket, sunglasses, sunscreen and wind-proof clothes just in case you need to leave your car to seek help.

- **Wear a seatbelt** at all times and make sure it is properly adjusted.
- **Be on the lookout for washouts.** Unpaved roads are subject to washouts. Check for conditions before traveling on these roads.
- **Drive the posted speed limits.** The number one killer of visitors is single car rollover accidents. Narrow shoulders and speed are the primary causes.



PACKING ESSENTIALS

Don't hit the trail without:

- Topographic Map and Compass + GPS
- Whistle
- Flashlight or Headlamp
- Sunglasses, Sunscreen and Hat
- High-energy Food and Plenty of Water
- Appropriate Clothing and Extra Layers
- Waterproof Matches
- Insect Repellent
- First-Aid Kit
- Sturdy Footwear



WHO'S WHO AT THE PARK

The following organizations support the park in various capacities.

THE NATIONAL PARK SERVICE

The **National Park Service (NPS)** is the federal custodian of Death Valley National Park. The NPS is responsible for preserving and protecting the natural and cultural assets of the park, protecting the wildlife and providing the park for public use. For information, call **(760) 786-3200** or visit nps.gov/deva.

DEATH VALLEY LODGING COMPANY

Death Valley Lodging Company holds the concession contract to Stovepipe Wells Village. The resort offers lodging, dining, RV sites and shopping. The company is environmentally conscious and strives to be the template for the future. For information, call **(760) 786-2387** or visit deathvalleyhotels.com.

XANTERRA PARKS & RESORTS®

Xanterra Parks & Resorts®, the nation's largest park management company, owns and operates the Furnace Creek Resort. For information, call **(303) 600-3400** or visit xanterra.com.

DEATH VALLEY NATURAL HISTORY ASSOCIATION

The **Death Valley NHA** is a nonprofit organization that provides visitors with a quality educational experience. DVNHA operates a bookstore at the Furnace Creek Visitor Center and Stovepipe Wells. Proceeds are used to aid NPS programs and projects. For information, call **(800) 478-8564** or visit dvnha.org.

DEATH VALLEY CONSERVANCY

The **Death Valley Conservancy** is a nonprofit organization whose mission is to provide support and private funding for projects that preserve, protect or enhance Death Valley National Park and its surrounding communities. Death Valley Conservancy created the Death Valley Fund, which helps fund park projects focusing on education and conservation. For information, call **(760) 462-5990** or dvconservancy.org.

DEATH VALLEY '49ERS

The **Death Valley '49ers** is an all-volunteer, nonprofit organization that seeks to heighten public awareness and interest in Death Valley. In the second week of November, the '49ers host an annual event that celebrates Death Valley's history. The event includes a nightly western musical, a vendor show, a wagon train and horseback riders. The event is open to all with a membership of \$40 per couple and \$25 for individuals. For information, visit deathvalley49ers.org.

CASSELL ENTERPRISES LLC

Cassell Enterprises LLC purchased Panamint Springs Resort in 2006. The Cassell family owns and operates this rustic resort comprised of a restaurant, motel, campground, gas station and general store. Call **(775) 482-7680** or visit deathvalley.com/psr.

Oh, Ranger!
GET THE APP!
IT'S FREE! DOWNLOAD NOW



PRESERVATION

Although the California Desert Protection Act of 1994 formally protected millions of acres in Death Valley National Park, its unique biologic and geologic assets continue to face degradation from numerous sources.

INVASIVE PLANTS

Plants imported from elsewhere in the world now flourish in Death Valley. The salt cedar tree, for example, is replacing the native cottonwood and willow trees and disrupting ecosystems. Tumbleweed has also traveled into the park to displace native vegetation. In Eureka Dunes and other places in the park, biologists are developing plans to control invasive species, while restoring native populations of plants.

AIR AND LIGHT POLLUTION

You might think that the remote location of Death Valley National Park would help keep its air pure and pristine, but winds still carry pollutants from metropolitan centers and industrial areas that lead to acid rain. The park has an air quality monitoring station near Furnace Creek that measures ozone, and a system for forecasting high ozone days is in development.

Death Valley is a huge expanse of undeveloped land, but it is still affected by noticeable glows from Las Vegas and central California. The National Park Service is trying to reduce local light pollution from within the park by changing current lighting techniques and studying night sky conditions. For their efforts, in 2013 Death Valley National Park was

named an International Dark Sky Park and is only one of a few U.S. parks with this designation.

WATER MINING

Many of the larger cities within the boundary of Death Valley's regional ground water flow system are experiencing some of the fastest population growth in the United States. Today's climate is hotter and drier than it was thousands of years ago, and it does not provide enough precipitation to recharge the aquifer at the rate the water is being withdrawn.

DEVILS HOLE PUPFISH

These tiny inch-long fish have managed to survive in the high heat and warm, mineral-rich water with limited food sources for more than 20,000 years. Human interference has at times reduced their numbers to less than 50, but the pupfish has much to teach scientists about adaptation to adverse conditions. They continue to swim and breed within the turquoise aquifer that rises to the surface at Devils Hole.

OVERGRAZING BURROS

Beginning in the late 1800s, a small number of burros escaped or were turned loose by prospectors. The burros quickly adapted to the desert conditions and flourished, reaching a population of nearly 10,000. They gather in large herds and overgraze the scant plant resources, pushing out the native bighorn population. The National Park Service has embarked on a program to reduce burro populations, which now number more than 500.



SIGHTS TO SEE

There is a lot to do and see in Death Valley—just make sure you have access to a car because you will want to cover a lot of ground! The park’s long list of attractions includes mysterious **sliding rocks**, a massive **blast crater**, **ghost towns**, remnants of gold and **borax mines** and other natural and historical points of interest. Nature lovers can savor stunning **wildflowers**, see fascinating wildlife and observe unusual desert ecosystems. Geology buffs can tromp through glistening **sand dunes**, brightly-colored badlands and eerie **salt deposits**. For history lovers, there are old charcoal **kilns** and interpretive exhibits about Death Valley’s rough-and-tumble past. In the largest park in the contiguous United States, there is something for everybody.

FURNACE CREEK AREA

View aprons of pink, green, purple, brown and black rock at **Artist’s Drive**, a

visual feast and a geologic tour of one of Death Valley’s most explosive volcanic periods. Artist’s Drive is a dipping, diving, curving, one-way road that weaves through striking ravines and colorful rock formations. The highlight of the nine-mile loop occurs at the **Artist’s Palette** where sea green, lemon yellow, periwinkle blue and salmon pink mineral deposits are splashed across the barren background like brilliant dabs of paint from a giant’s brush. The effect is most intense during the evening as the colors change rapidly with the setting sun. Artist’s Drive is off of the Badwater Road, 10 miles south of the Furnace Creek Visitor Center.

BADWATER BASIN

With the Black Mountains in the background, visitors can stroll through a shimmering expanse of nearly pure white table salt in **Badwater Basin**; at 282 feet below sea level, it is the **lowest point**

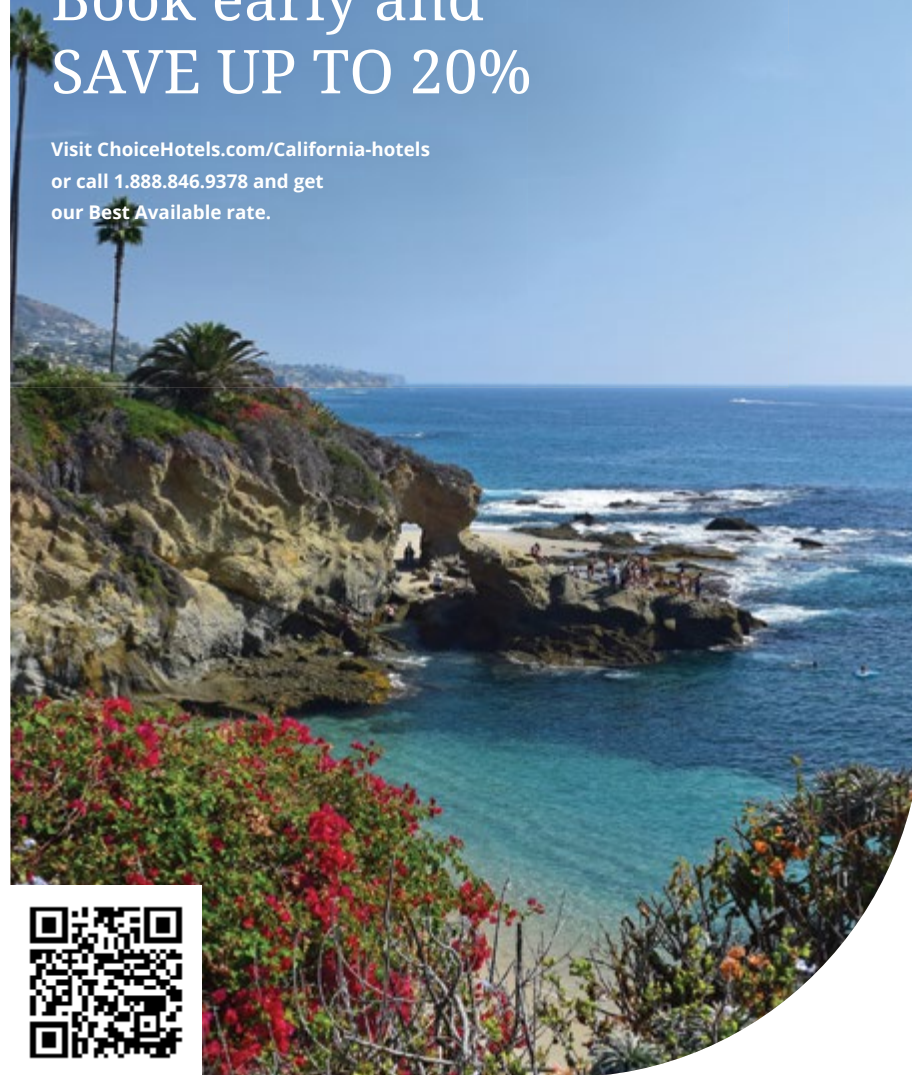


Visitors leave teakettles on the sign marking Teakettle Junction.

NPS

Connect With Your People In California Book early and SAVE UP TO 20%

Visit ChoiceHotels.com/California-hotels
or call 1.888.846.9378 and get
our **Best Available** rate.



You always have a choice.

Advance reservations required. Advance Purchase rate offer only available online and cannot be combined with any other discount or offer. Subject to availability at participating hotels throughout California. ©2017 Choice Hotels International. All rights reserved.

in North America. Two to four thousand years ago the basin was the site of a 30-foot-deep lake that evaporated and left a one- to five-foot layer of salt in its wake. A briny pond, four times saltier than the ocean, still remains in the basin during the winter, but during the hot summer months, it shrinks to little more than a puddle. Visitors are asked to stay on the boardwalk to avoid crushing the tiny Badwater snails, a species that lives under the salt crust and feeds on algae. Badwater basin is located 18 miles south of the Furnace Creek Visitor Center.

DANTE'S VIEW

Dante's View, a popular unworldly lookout point, offers a striking example of the distinctive basin and range topography that extends from Eastern California to central Utah. The steep, elongated mountain ranges alternate with flat, dry, desert valleys—the result of an intense stretching of the crust that has resulted in a series of north-south faults. These faults separate the basins from the ranges. Dante's View is more than **5,000 feet above the valley floor**; at this high altitude in the dry desert air you can see across most of 110-mile-long Death Valley. At Dante's Peak, a short hike north, the views up and down offer an unparalleled vantage point. The white salt flats far below make up Badwater Basin, at 282 feet below sea level. Dante's View is certainly one of the most extraordinary sights anywhere in California. It is located on Dante's View Road off Route 190, 26 miles southeast of Furnace Creek.

DEVIL'S GOLF COURSE

The floor of Death Valley is a vast evaporating dish covering more than 200 square miles. It is crusted over with a variety of salts, and nowhere is this more apparent

than at **Devil's Golf Course**. Here, gnarled crystalline salt spires dot the landscape and look like a coral reef run amok. The lumpy salt pinnacles are the residue of Death Valley's last significant lake, which evaporated 2,000 years ago. Though there is no official hiking trail, visitors can tromp through this strange and rugged terrain for a closer look at the spectacular formations. As you do, however, be careful not to hurt yourself on the jagged structures and make sure not to damage the crystals. During the summer, listen for tiny pops and pings as billions of the salt crystals contract and expand due to fluctuations in temperature. Devil's Golf Course is located 15 miles south of the Furnace Creek Visitor Center. Note: The road leading to Devil's Golf Course is often closed after rain.

HARMONY BORAX WORKS

Wander between the rusting remains of buildings, machinery, tanks and piping at Harmony Borax Works, a mining operation that dates back more than 120 years. After prospectors found borax in 1881, **William Tell Coleman** built the Harmony plant and began to process ore in late 1883 or early 1884. Operating at capacity, the Harmony Borax Works employed 40 men who produced three tons of borax daily. Learn how early miners used those famed **20-mule teams** to haul borax 165 miles to the railroad town of Mojave. The teams averaged two miles an hour and required about 30 days to complete a round-trip. The Harmony plant went out of operation in 1888 after only five years of production when Coleman's financial empire collapsed. The Harmony Borax Works is located just off Highway 190, one mile north of the visitor center. The Borax Museum is located at the Furnace Creek Ranch, two miles south of Harmony Borax Works.



60 miles west of Las Vegas. 180 degrees different.



Every day is an opportunity for another adventure in Pahrump, with beautiful sights, epic hikes, and plenty of fast-paced fun. Plus, we're just a short road trip away from Death Valley National Park. Start planning your next adventure today.

ZABRISKIE POINT

Peer from one of the park's most popular lookouts at **Zabriskie Point** for an unforgettable view of Death Valley's wildly eroded and vibrantly colored badlands. A short uphill hike from the parking area is all that's required to enjoy a panoramic view of golden-brown mudstone hills riddled with rills and gullies from the occasional, but intense, times when water rushes down these bone-dry slopes. The desolate, unearthly landscape surrounding Zabriskie Point is ideal for viewing sunrises and sunsets, so bring your camera! Zabriskie Point is located five miles south of Furnace Creek on Highway 190.



Marianne Muegenburg Cothorn

The uniquely shaped Wildrose Charcoal Kilns have stood in Death Valley since 1877.

STOVEPIPE WELLS AREA

Don't leave Death Valley until you have played on and explored the **Mesquite Flat Dunes**! Located near Stovepipe Wells Village, these 150-foot dunes are nearly surrounded by mountains on all sides. The primary source of the sands is the **Cottonwood Mountains**, which lie to the north and northwest. The tiny grains of quartz and feldspar that make up the dune field began as much larger pieces of solid rock, but through erosion, became sand-sized. The dunes can be explored on foot. Like many of Death Valley's geologic highlights, the colors and contours of the Mesquite Flat Dunes are especially spectacular at sunset. The most popular place to access the sand dunes is about two miles east of Stovepipe Wells Village—23 miles northwest of Furnace Creek—on Highway 190. Mosaic Canyon, which is located just west of Stovepipe Wells, is considered to be a geologic wonder and is a moderate one- to four-mile hike.

PANAMINT SPRINGS AREA

Marvel at beehive-shaped kilns at the **Wildrose Charcoal Kilns**, erected by the Modock Consolidated Mining Company

in 1877. The well-preserved kilns—each standing about 25 feet high with a diameter of approximately 30 feet across—were used to convert **pinyon** and **juniper logs** to charcoal for two silver mines located 25 miles away in the Argus Range. Each kiln held 42 cords of pinyon pine logs and, after burning for a week, would produce 2,000 bushels of charcoal. The Wildrose kilns are considered to be the best surviving examples of charcoal kilns found in the western states. They owe their longevity both to fine workmanship and to the fact that they were used for such a short time. The kilns can be reached via Wildrose Canyon Road and are four miles east of the intersection with Emigrant Canyon Road.

RACETRACK PLAYA

The mysterious sliding rocks of the famed **Racetrack Playa** are an amazing sight. This dried lakebed, which is nestled between the Cottonwood Mountains to the east and the Last Chance Range to the west, contains boulders that have puzzled geologists for decades. Furrows in the mud indicate that

CASIO®

WSD-F20

Smart Outdoor Watch PRO TREK Smart androidwear

Dual-layer LCD

The display uses a two-layer structure consisting of monochrome liquid-crystal overlaid with color liquid-crystal. The monochrome liquid-crystal permanently shows the time, while the color liquid-crystal displays maps, measurements and apps.

MIL STANDARD-compliant

The watch's resistance to environmental conditions complies with the MIL-STD-810G environmental test standard stipulated by the US Department of Defense. This testing checks that the watch operates normally under a wide range of environmental stresses, including being dropped and subjected to vibration, and that it can handle the tough demands of outdoor use.

Location Memory

Links with the GPS function to accurately display local places and track your movements, as well as allowing you to record specific locations.



Knowing Where you Are
The color map display means you can always see where you are.

Downloading the maps beforehand allows you to check your location on the map even when your smartphone is out of signal range.



Recording Memory on Maps
You can use the "TOOL" and "APP" buttons to zoom the map in or out. You can also use the tracking marks and voice input to leave text memos on the map.



TOOL button

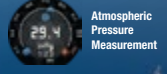
Calls up tools such as the compass or altimeter and can be assigned to any app.



Direction Measurement



Altitude Measurement



Atmospheric Pressure Measurement

APP button

Can be assigned to any app.

androidwear

Android Wear™ APP

As well as notifications and responses to incoming email and calls, the phone supports a range of apps and services provided by Google™.

GPS Bluetooth®

Water Resistant to 50 Meters

Size: 61.7 x 57.7 mm (H x W) Thickness: 15.3 mm Weight: 92 g

* Android Wear, Google and other product names are trademarks of Google Inc.
* Some functions are not available when the phone is connected to an iOS device.

these boulders have wiggled, jiggled, slipped and slid their way across the perfectly flat bed in what is truly one of the strangest rock dances of all time. Long-term studies of the “**sailing stones**” show that most move in a northeast direction. However, scientists have found some treading south and west, carving zigzag paths along the playa. Recent observations using GPS and time-lapse photography suggest that rocks move when razor-thin ice sheets start to melt during periods of light wind. These ice panels can move the rocks at up to five meters per minute. The Racetrack Playa is located 27 miles southwest of Ubehebe Crater on an unpaved road. High-clearance vehicles with heavy-duty tires are recommended. Ask about road conditions before visiting.

UBEHEBE CRATER

Hike to the heart of **Ubehebe Crater**, a 770-foot-deep steam-explosion crater and imagine the instant when water suddenly flashed to steam—shattering the rock above and ejecting a cloud of debris at speeds of up to 100 miles per hour! Remember to bring plenty of water along with you: The climb out is grueling. Ubehebe Crater is located eight miles west of Scotty’s Castle.

GHOST TOWNS

No trip to Death Valley is complete without visiting one of the many ghost towns. The conditions of the towns themselves vary, but all are reminders of Death Valley’s history. Every piece of rusting machinery and bit of wood represents a part of the past. Do not remove, burn or disturb any of the remains.

BALLARAT

A gold mine camp and home to 400 people in 1898, Ballarat is now the site

of several adobe dwellings located off the Panamint Valley Road, west of Death Valley.

LEADFIELD

All that remains of Leadfield are the skeletons of wood and tin buildings, a dugout and cement foundations of the mill. Despite a brief influx of people in 1926, the town failed in 1927. This former lead mine is located on Titus Canyon Road (high-clearance vehicles recommended).

PANAMINT CITY

Called the “toughest, rawest, most hard-boiled little hellhole that ever passed for civilized,” Panamint City boomed in 1874 with a population of 2,000 people. In 1876, a flash flood destroyed much of the town, leaving little more than the chimney from the mine’s smelter. The town is accessible via a five-mile hike from **Chris Wicht’s Camp**, located six miles northeast of the ghost town of Ballarat.

RHYOLITE

The largest ghost town near Death Valley, Rhyolite boasted a population of nearly 10,000 people during its peak between 1905–1911. At its height, the town contained two churches, 50 saloons, 18 stores, two undertakers, 19 lodging houses, eight doctors, two dentists, a stock exchange and an opera.

Many ruins of the town remain today, including the Bottle House, the train depot, the remains of a three-story bank building and the jail. Rhyolite is a great trip and located just four miles west of Beatty on Bureau of Land Management (BLM) property. The location is approximately 35 miles from the Furnace Creek Visitor Center and a nice place to visit outside the park.



HISTORY & CULTURE

Along with its stunning natural splendor, Death Valley can lay claim to a rich and colorful human tale that begins at least 10,000 years ago.

ARCHEOLOGY

The archeological record indicates that American Indians have lived in Death Valley for the last 10,000 years, a period known as the **Holocene**. Four distinct American Indian cultural stages emerged during this time frame.

Archeologists estimate the first stage occurred approximately 9,000 years ago. The **Nevares Spring** people hunted game and used scrapers and knives made of **chert**,

a unique rock that flakes easily and could readily be fashioned into projectile points.

The next stage was a hot and dry period that lasted roughly 4,000 years; sometime during that era the **Mesquite Flat** people replaced the original inhabitants. The presence of grinding tools in their toolbox, however, suggests that human subsistence was shifting from hunting animals to the gathering of seeds, nuts and berries.

In the third stage, commencing about 2,000 years ago, the **Saratoga Spring** people evolved in what had become a dry, hot desert. These were more advanced hunters and gatherers who brought the



See replicas of the wagons used to ship Borax from Death Valley at the Harmony Borax Works Interpretive Trail.



TIMBISHA SHOSHONE

Few people realize that an American Indian tribe currently lives and thrives in Death Valley National Park. For thousands of years, the Timbisha Shoshone have resided in Southeast California and Southwest Nevada. In 1936, the tribe established a tribal center on a 40-acre tract at Furnace Creek. The tribe achieved federal recognition in 1983 as the Death Valley Timbisha Shoshone Band of California, but did not have a land base until the passage of the Timbisha Shoshone Homeland Act on November 1, 2000. This act transferred over 7,000 acres of trust lands to the tribe both in the park and adjacent to its acreage.

The traditional ancestral homeland of the Timbisha covers approximately 11 million acres within the Mojave Desert. The Timbisha began to be displaced in the

mid-19th century when miners, ranchers and homesteaders moved into the region. Between the mid-1920s and 1936, they were forced to move four times.

The Timbisha Shoshone Homeland Act also provides for the purchase of two areas currently held by private interests. At their Furnace Creek site, the tribe is developing new homes, some limited commercial activity and building single family residences, a tribal community center, an inn, a tribal museum and a cultural center with a gift shop. Although the legislation bans hunting and gaming, the Act does allow tribal access to traditional use resources and sacred sites. It also mandates park lands used for traditional practices be cooperatively managed under a plan mutually agreed upon by the tribe and the National Park Service.

bow and arrow and left mysterious, meticulously crafted stone patterns in the valley. The people of the fourth stage, which began around A.D. 500, were directly related to some of the Shoshone-speaking tribes who still inhabit the valley and introduced pottery to the region.

THE DEATH VALLEY WAGON TRAIL OF 1849

The first white men to enter Death Valley were a group of pioneers associated with the **Death Valley Wagon Train**. Many gold seeking pioneers arrived at Salt Lake City and were told not to continue on like the Donner Party as it was too late in the year and suggested they wait till spring. The pioneers became restless and organized a wagon train of over 125 wagons with **Capt. Jefferson**

Hunt as their guide. The first two weeks of travel were slow and many impatient pioneers decided to take a shortcut toward **Walker Pass**, hoping to cut some 500 miles off the journey.

The point where these wagons left the trail is near the present-day town of **Enterprise, Utah**, where a monument commemorates the historic departure. Within a few days, the wagon train came upon a major cliff extending several miles in both directions. After about a month of slow progress through central Nevada, the pioneers reached the borders of Death Valley in December. They traveled along the same route followed by Highway 190 and in December 1849, arrived at Travertine Springs, located near Furnace Creek. The lost pioneers had now been

traveling across the desert for about two months since leaving the trail. They sent two young men to look for help, and ended up waiting 26 days for them to return empty handed. Once reunited, the group headed north near present-day Stovepipe Wells, but discovered it, too, was impassible. They decided to leave their belongings behind and walk to civilization, and used wood from their wagons to cook the meat of several slaughtered oxen. The place today is referred to as "**Burned Wagons Camp**" and is located near the Mesquite Flat sand dunes of Death Valley.

After crossing the mountains and down into Panamint Valley, they turned south and climbed a small pass into Searles Lake Valley before making their way into Indian Wells Valley near the present-day city of Ridgecrest. It was here that they got their first look at the Sierra Mountains, and turning south, followed a trail that brought them to Walker Pass, which would finally lead them back to civilization.

MINING

The most profitable and longest-sustained mining activities in the region centered on talc and borate. Borax deposits, discovered in 1873, were first successfully promoted by W.T. Coleman. He built the Harmony Borax Works and developed the famous system of 20-mule team wagons that hauled the mineral 165 miles across the desert to the railroad at Mojave. The Harmony plant went out of operation in 1888 when Coleman's financial empire collapsed, after only five years of production. By the early 20th century, most of the other mining operations followed suit.

Library of Congress



This Shoshone man posed for a portrait in 1899.

TOURISM

The first tourist facilities in Death Valley were tent houses built in the 1920s at the site of today's Stovepipe Wells. **Herman (Bob) Eichbaum** began building a toll road in the 1920s and opened the Stovepipe Wells Hotel in 1926. In 1927, the Pacific Coast Borax Company opened the Inn at Furnace Creek to visitors. In the early 1930s, they converted the working ranch into what is now the Furnace Creek Ranch.



SHARE YOUR FAVORITE
PHOTOS WITH US!
FOLLOW US! @OhRanger



Death Valley—the hottest and driest place in North America—is surprisingly home to an abundance of uniquely adapted life forms. A total of 1,042 plant species, 51 species of native mammals, 346 types of birds, 36 classifications of reptiles, six types of fish and five species of amphibians live here.

DESERT ECOSYSTEM

If you were to travel from briny Badwater Basin to the tip of **Telescope Peak**, you would cross four distinct ecological zones, each determined by climate and elevation. At Furnace Creek on the valley floor, precipitation averages a mere 1.9 inches per year, while the highest peaks receive about 15 inches annually.

The **Lower Sonoran**, which covers the lowest 4,000 feet, is dominated by desert holly and creosote bush that grow in gravelly alluvial fans. The **Upper Sonoran** extends to an elevation of 8,500 feet and consists of sagebrush, other desert shrubs, and culminates with **pinyon pine** and **juniper**. Pinyon pine and juniper give way to sierra juniper and mountain mahogany in the transition zone. The **sub-alpine zone** begins at an elevation of 9,000 feet where limber and bristlecone dominate. Differences in vegetation are primarily due to the precipitation gradient.

Death Valley's plants supply themselves with water in one of two ways. **Xerophytes** generally have short roots and depend on ephemeral water that is above the water table; as a result, these plants are able to survive periods of protracted drought. **Phreatophytes** have longer roots and tap a perennial water source from the

top of the underground saturated zone. Desert holly is a xerophyte and the most drought-resistant plant in Death Valley. It grows on the hottest, driest and saltiest parts of the gravel fans where the ground is too dry and salty even for **creosote bush**—another xerophyte and the most common plant in the lower Sonoran zone. **Desert holly** is more abundant on the east side of the park due to the dry, saline fans that are found there. **Pickleweed**, a curious sprawling succulent shrub, is a phreatophyte that is extremely salt-tolerant and grows near the edge of the salt flats. Other phreatophytes common in Death Valley include **salt grass**, **arrowweed** and **honey mesquite**.

WILDFLOWERS

Spring wildflowers are one of Death Valley's top attractions. To see this land awash in color is an unforgettable experience! Some years the flowering season is spectacular, other times it is nearly nonexistent. If you are lucky enough to see wildflowers, remember that you are in a national park and must heed its rules and regulations. Picking flowers is strictly prohibited.

PEAK BLOOMING PERIODS

Rainfall: The best time to see a spring floral display is in years of high rainfall, when precipitation has exceeded the Death Valley annual average of only about 1.9 inches. Flowers usually begin blooming at the end of February and continue to impress through April. Be sure to call the park before visiting. In general, years that see heavy rains in late October with little

rain through the winter months will not bring out the flowers as well as years that witness evenly-spaced precipitation throughout the winter and into the spring.

Valley Floor and Alluvial Fans: Best in mid-February to mid-April. Look for desert star, blazing star, desert gold, mimulus, encelia, poppies, verbena, evening primrose, phacelia and various species of cacti.


2,000 to 4,000 feet: Best in early April to early May. The prime spot for viewing

is the Panamint Mountains. Look for desert paintbrush, Mojave Desert rue, lupine, Joshua tree, bear poppy, cacti and Panamint daisies.

Above 4,000 feet: Best in late April to early June; as with lower elevations, the ideal viewing area continues to be the Panamint Mountains. Look for **Mojave wildrose**, rabbitbrush, Panamint daisies, mariposa lilies and lupine. No matter what season you come to view the flowers, be sure to bring a camera!

SNAKE BITE PREVENTION TIPS

NPS



Take caution while hiking and be aware that you are in snake country.

IF YOU ENCOUNTER A RATTLESNAKE:

- Stay calm and try to locate the snake's position before moving away quickly.
- Back away slowly, giving the snake plenty of room. They only can strike a distance equal to half their own length.
- Do not try to kill or move the snake; 75 percent of snakebites occur when people try to capture or kill snakes.

IF YOU ARE BITTEN BY A RATTLESNAKE:

- Stay calm. According to the FDA, of 8,000 people who suffer venomous bites in the U.S., only nine to 15 die. Furthermore, 25 percent of adult rattlesnake bites are dry (no venom is injected).
- Wash the bite with clean water and soap.
- Immobilize the bitten area and keep it lower than the heart.
- If the bite is on the hand or arm, remove any rings, watches or tight clothing.
- Seek immediate medical attention.



WATCHABLE WILDLIFE



1 BOBCAT (*LYNX RUFUS*)

Perhaps the bobcat's most recognizable feature is its ears, which are pointed with black hair tufts spiking upward. Named for its stubby, bobbed tail, the bobcat is most active at twilight and dawn. It keeps a diurnal schedule in the winter to sync with the activity of its prey. • **Weight** 20 pounds • **Length** 2-3.5 feet • **Tail** 4-7 inches • **Active** year-round. Photo: NPS

2 DESERT BIGHORN SHEEP (*OVIS CANADENSIS NELSONI*)

These bighorns reside throughout the south-western region of the country and have adapted to extended periods of time without water. They have unusual padded hooves, allowing them to climb steep, rocky terrain. Soon after birth, they develop horns that grow for life. • **Height** 3 feet (at shoulder) • **Weight** 150-200 pounds • **Active** year-round. Photo: U.S. Fish & Wildlife.

3 DESERT IGUANA (*DIPSOSAURUS DORSALIS*)

More heat tolerant than any other reptile in North America, this species is widely distributed throughout the Mojave, Sonoran and Colorado deserts. It's primarily an herbivore and eats flowers, buds, fruits and leaves (especially creosote!). It's found mostly on sandy flats and in rocky, hilly areas. • **Length** 16 inches • **Hibernates** in winter. Photo: Marshal Hedin.

4 KANGAROO RAT (*DIPSOSAURUS DORSALIS*)

At first, the kangaroo rat appears to be like any number of small rodents with golden-brown fur, shiny bulbous black eyes and whiskers atop a tiny nose. With the right diet, it can go without water completely, due to kidney and metabolic processes structured to efficiently retain water. • **Weight** 2-5 oz. • **Length** 12-14 inches • **Active** year-round. Photo: Wikimedia

5 KIT FOX (*VULPES MACROTIS*)

The kit fox is adapted to the desert and semi-arid regions of the western U.S. They're nocturnal hunters, moving in irregular patterns through vegetated desert areas. They're primarily carnivores, but when food is scarce, kit foxes can be omnivores. They do not need to drink water, as their prey provides them with adequate hydration. • **Length** 2-2.8 feet, including tail • **Height** 1 foot at shoulders • **Weight** 3-4 pounds • **Active** year-round. Photo: Robert Bieber

6 MULE DEER (*ODOCOILEUS HEMIONUS*)

The naturally timid mule deer can be found in the pinyon/juniper associations of the Grapevine, Cottonwood and Panamint Mountains. Mule deer may appear tame and even approach you, but they're wild animals and may charge if they feel threatened. Always keep a safe distance. • **Weight** 70-250 pounds • **Length** 4-7.5 feet • **Active** year-round. Photo: NPS



THINGS TO DO

Regardless of the season, there's always a lot to do in Death Valley—not surprising when you consider the park includes a 156-mile stretch between two mountain ranges, numerous archeological and historical treasures, and the single lowest point in North America. Here are just some of the most popular activity options:

AUTO TOURING

If you like to drive—and if you enjoy desert landscapes and unusual geology—then pack up the car! Before venturing out into the park, stop at the visitor center or a ranger station to inquire about current road conditions, as well as any necessary

directions. Always remember to bring lots of water in case your car breaks down.

SUNRISE AND SUNSET

For many, the most extraordinary time to experience the desert landscape is when the sun is close to the horizon. Bring a camera, tripod and arrive approximately one hour before sunset or sunrise. Enjoy the sunrise at Dante's View, Zabriskie Point and Badwater. Prime spots to see the sunset are Artist's Drive, Mesquite Flat Dunes and Ubehebe Crater.

HORSEBACK RIDING

Many visitors enjoy the beauty of Death Valley from a saddle. Both one-

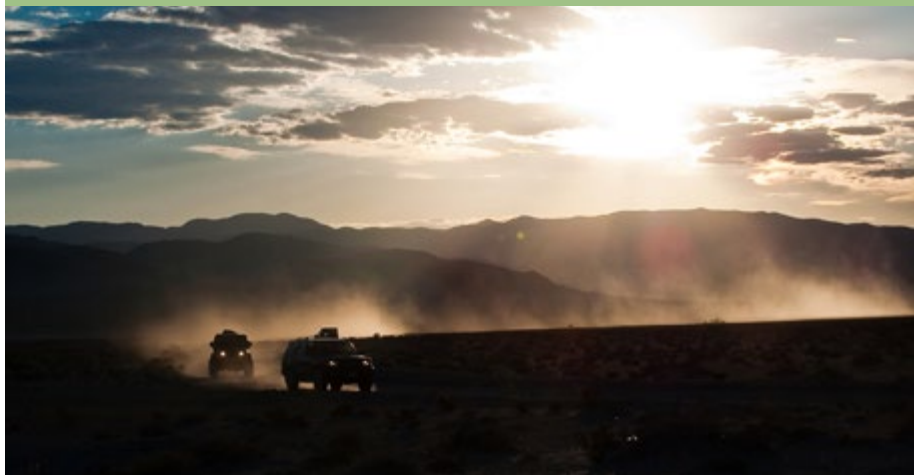
excentric_01/Stock



Horseback rides offer visitors a new perspective on Death Valley from a saddle.



BEYOND THE MAIN ROAD



Peretz Partensky

See the backcountry in a rented Jeep, but be sure to bring a detailed backcountry map.

Much of Death Valley’s beautiful scenery is located beyond the park’s main roads. More than 800 miles of unpaved, **backcountry roads** provide access to wilderness hiking, camping and historical sites. You’ll need a licensed, street-legal vehicle with high clearance for all backcountry roads, some of which may also require four-wheel drive to traverse.

Be aware that **most vehicle rental agreements restrict vehicles to paved roads**. Check your contract and be aware that the rental company can charge you for damage to the vehicle outside of the contract agreement specifications. Be sure that your rental vehicle has a good spare tire, that the tire is accessible and not “locked” into a keyed holder, and that the tools to change the tire, including jacks and wrenches, are in the vehicle and accessible.

Farabee’s Jeep Rentals, located across from the Inn at Furnace Creek, offers daily rentals of Jeeps outfitted for rugged backcountry road use. Visitors can take vehicles out and explore more remote areas of the

park. For more information or to make reservations, please call (877) 970-5337 or (760) 786-9872, or visit farabeeesjeeperentals.com.

If you decide to travel into the backcountry on your own, make sure you have a detailed backcountry road map, as many remote roads do not appear on the official park map. Inquire at the visitor center about availability of maps. Backcountry roads are susceptible to washouts after storms and may close or require chains in the winter. Always check for current road conditions at the Furnace Creek Visitor Center or other ranger stations, or on the daily Death Valley National Park Morning Report. Backcountry camping is restricted to certain areas, so please check in at a visitor center before planning an overnight trip and fill out a backcountry camping permit. Remember to carry plenty of water and never rely on backcountry water sources.

Do not depend on GPS devices, as they may show roads that have been closed in recent years.

and two-hour or moonlight horseback rides are available. For those who savor a truly romantic treat, you can even ride in a horse-drawn carriage while sipping champagne! For more information, call **(760) 614-1018**.

BIKING

Biking is permitted at Death Valley, and many seasoned riders enjoy the challenge of the park’s rugged terrain and sizzling temperatures. When cycling, remember to always keep bikes on roads used by autos—never take them onto hiking trails or cross-country. During the warm-weather months from May through October, avoid biking in the lower levels of Death Valley during any hours other than early morning; the heat can be dangerously oppressive. If you do not bring your own bike, the Ranch

at Furnace Creek offers rentals. Avoid biking in canyons if there is a storm approaching. Sunglasses, a first aid kit, proper clothing and extra food and water are recommended for a safe trip.

RANGER PROGRAMS

Throughout the year, park rangers offer a number of programs. Visitors can go stargazing, experience the desert environment or discover geology. Programs are presented at the Furnace Creek Visitor Center or in various locations throughout the park. For more information, visit nps.gov/deva.

WHAT WAS YOUR FAVORITE ACTIVITY AT DEATH VALLEY? LET US KNOW! @OhRanger

RIDE ON
DESIGNATED ROADS • TRAILS • AREAS

RESPECTED ACCESS IS OPEN

Please tread lightly and travel only on routes and in areas designated open for motor vehicle use. Remember, Respected Access is Open Access.

treadlightly! www.treadlightly.org

U.S. FOREST SERVICE



LODGING & DINING

There are a variety of dining and lodging options in Death Valley and beyond. Within the park, the Death Valley Lodging Company manages the park concession at Stovepipe Wells. Xanterra Parks & Resorts®, the nation's largest park management company, operates the historic Inn at Furnace Creek, built in 1927, as well as the Ranch at Furnace Creek. Panamint Springs Resort is a private entity offering reasonably-priced services on the west side of the park.

1. ☼ Inn at Furnace Creek Built in 1927, this AAA four-diamond resort is surrounded by the Panamint and Funeral Mountains and Death Valley National Park. The Inn at Furnace Creek features a natural spring-fed swimming pool, cascading palm gardens, tennis, massages, hiking, touring and fine dining. As the resort is undergoing renovations, the Inn will not open until December 2017 (the usual opening date is October). Additionally, the site may stay open year-round once it reopens. For more information or to make a reservation, call (800) 236-7916 or visit furnacecreekresort.com. The **Inn Dining Room** features fireplaces, beamed ceilings and spectacular views which provide a visual feast to match the Inn's ambitious menu. Lunch entrées range from \$13 to over \$18. Dinner entrées range from \$27 to over \$50. Dress code for dinner. Shorts and T-shirts are not permitted. Reservations are strongly recommended. The Inn Dining Room is open mid-October to mid-May. Photo: Xanterra Parks & Resorts ©L©D ☒

2. ☼ Ranch at Furnace Creek 224-guest units are complemented by three restaurants, a saloon, a general store, the

Borax Museum and airstrip. Recreational opportunities include a spring-fed swimming pool, golf course, putting green, shuffleboard, bocce ball, tennis, hiking, seasonal horseback riding, horse-drawn carriage rides and a 3,040-foot airstrip. Call (800) 236-7916 or visit furnacecreekresort.com. The **Wrangler Buffet/Steakhouse** serves all-you-can-eat breakfast, lunch and dinner buffets with a rotating menu of hot and cold entrees. ©L©D The **Corkscrew Saloon**, a full bar featuring a jukebox and televised sporting events, also offers snacks such as pizza, hot dogs and buffalo wings. © The **19th Hole** bar and grill offers old-time burgers, Mulligan burgers, entree salads and hot dogs. The bar offers drive-through cart service for golfers. (seasonal mid-Oct. to mid-May)© **Forty-Niner Cafe** Offers family dining with full cocktail service, including a variety of wines, available for breakfast, lunch and dinner. Dress is casual. Photo: Xanterra Parks & Resorts ©L©D **Note:** The Ranch At Furnace Creek will be undergoing extensive renovations around June/July 2017 through summer 2018. Call **(760) 786-2345** for information about closures/temporary sites.

3. ☼ Stovepipe Wells Village Located in the heart of Death Valley National Park, Stovepipe Wells Village offers a relaxing and refreshing atmosphere. Accommodations can be somewhat pricey. The village boasts a pool, limited WiFi, a gift shop, general store, restaurant and saloon. It is a 30-minute walk or short drive to the sand dunes and within easy driving distance to Furnace Creek, Mosaic Canyon, Rhyolite ghost town, Aguerberry Point, the Charcoal Kilns, Dante's View and Badwater. Open



Energizing adventure in partnership with the National Parks Conservation Association.



GO AND CONQUER
SAVE 20%
PLUS EARN 1,000 WYNDHAM REWARDS
BONUS POINTS WHEN YOU BOOK 2 NIGHTS*
AT TRAVELODGE.COM/GO

Travelodge®

The difference between a trip and an adventure?
The can-do, can-conquer attitude that can only come from a good night's sleep.

Stay Close to Adventure.® **Travelodge** and Go.

*Subject to availability at participating hotels. Wyndham Rewards members only. Book online by September 4, 2017 & complete the 2 night minimum stay by September 10, 2017. Sunday - Thursday arrivals only. Offer subject to change/cancellation at any time, as well as full terms at www.travelodge.com/go. Void where prohibited.



year-round. Call (760) 786-2387 or visit deathvalleyhotels.com to make a reservation. The **Toll Road Restaurant** and **Badwater Saloon** were built with timbers from an old Death Valley mining operation. Today, Stovepipe Wells serves a buffet breakfast and dinner. The restaurant offers a full-service menu featuring incomparable regional fare. The saloon offers a great selection of draft beer, cocktails and delicious appetizers in a unique western atmosphere. Entrees range from \$11 to \$30. Call (760) 786-2387 for more information. Photo: Mariusz S. Jurgielewicz 

4.  Panamint Springs Resort (PSR) is a rustic western-style resort located in Panamint Valley inside the western edge of Death Valley National Park. Outstanding views of distant sand dunes and the Panamint Mountains complete the setting for leisure, dining and relaxation. Panamint Springs offers a campground, motel, restaurant, gas station and small store (all open year-round). For more information, panamintsprings.com or call (775) 482-7680. Breakfast, lunch and dinner are served year-round. PSR features delicious 100 percent angus burgers and scrumptious gourmet pizzas. Catering is available for special groups upon request. Entrees cost about \$15-\$20; steak \$30. For






more information call (775) 482-7680 or visit panamintsprings.com. Photo: Panamint Springs Resort 

5. Amargosa Opera House and Hotel Located in Death Valley Junction, a few miles west of the California-Nevada border near Death Valley National Park, the Amargosa boasts a unique old-western/Spanish atmosphere with weekly shows at the on-site opera house from October–May. Many of the rooms are painted by Marta Beckett, the hotel’s proprietor. For more information, call (760) 852-4441 or visit amargosa-opera-house.com. Photo: Amargosa Opera House

6. Stagecoach Hotel and Casino Located in nearby Beatty, Nevada, the Stagecoach has 80 rooms, all equipped with a refrigerator, satellite television and air-conditioning. The newly renovated on-site restaurant offers 24 hour food service. For more information, call (800) 424-4946, (702) 553-2419 or visit bestdeathvalleyhotels.com.

7. Lodging Beyond the Park To the west of Death Valley National Park, lodging is available in the towns of Bishop, Big Pine, Independence, Lone Pine, Olancho, Ridgecrest and Inyokern. To the east, there are accommodations in Tonopah, Goldfield, Beatty, Amargosa Valley, Death Valley Junction, Pahrump, Shoshone and Tecopa.

KEY

	Breakfast		Lunch		Dinner
	Reservations required		Open in winter		

RESERVATIONS REQUIRED



WALKING & HIKING

Hiking in Death Valley is uniquely rewarding, but harsh terrain and extreme temperatures demand careful preparation. Before venturing out on a hike, it is vital to pack sunscreen, food, foot protection and plentiful amounts of water. Be prepared for significantly cooler weather at higher elevations. Avoid hiking alone and always let someone else know your planned route.

THINGS TO KNOW BEFORE YOU GO

Water is a necessity. Bring at least two liters for a winter-day hike and four liters or more if you plan to venture out in summer. Always bring extra supplies.

Constructed trails are rare in the park. Trails are provided in places that are heavily used and sensitive to damage. If a trail is there, please use it. Most hiking routes in the park are cross-country, up canyons or along ridges. Footing will likely be rough and rocky.

Hiking the low elevations can be dangerous when it’s hot. The best time to

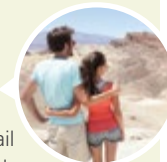
Rick McCharlies



Plenty of water is required to beat the desert heat on hikes like the trek to Telescope Peak.

Oh, Ranger! FUN FACTS

Q. WHAT IS A GOOD HIKE FOR WILDLIFE VIEWING?



Salt Creek Interpretive Trail is an easy one-mile hike along a boardwalk that overlooks a small stream. The trail is a good place to view rare pupfish and other wildlife and is best in late winter and early spring.

For answers to all your questions, go to OhRanger.com

hike in Death Valley is October through April. Avoid the salt flats in hot weather. When temperatures are above 100°F, visitors are advised not to walk away from their vehicles onto the salt flats (or anywhere below sea level). There is no shade to protect hikers from blazing reflected sunlight, and summer ground temperatures can exceed 200°F.

Flash floods are a possibility at all times. In Death Valley, storms can form suddenly. Even if it’s not raining where you happen to be hiking, torrential rain on higher ground can fill washes and canyons quickly. Be aware of weather conditions; if it begins to rain, get out of a wash or streambed and onto higher ground. Also be aware of flash flood channels when you park for a day hike to ensure that your car will remain where you left it.

Keep in mind that dogs and bicycles are not allowed on any of the trails or in the wilderness.



HIKING TRAILS

Trail <i>Destination</i>	Description	Round Trip Distance <i>Time</i>	Difficulty <i>Elevation Gain</i>
BADWATER SALT FLAT			
<i>Badwater parking area, 17 miles south of Hwy 190 on Badwater Road</i>	Level walk across lowest place in North America. Temporary lake may cover salt crystal crust after rain. Don't hike here in hot months. No trail. Hiking the full length is strongly discouraged.	½ mile to edge. 5 miles across	easy level
DANTE'S RIDGE			
<i>Dante's View parking area</i>	Follow ridge north of Dante's View for spectacular vistas. First summit at ½ mile. No trail for last 4 miles, one way.	4 miles to Mt. Perry 2-3 hours	moderate 320 feet
DESOLATION CANYON			
<i>Parking area at end of ½ mile dirt road off Badwater Road, 3.7 miles south of Hwy 190</i>	Narrow canyon through colorful badlands. Follow old road and then main wash east continuing toward cliffs, then follow the wash draining from the south. Hike up canyon, keeping to the right at the forks.	3 miles 2 hours	moderate 165 feet
GOWER GULCH LOOP			
<i>Golden Canyon parking area, 2 miles south of Hwy 190 on Badwater Road</i>	Colorful badlands, canyon narrows, old borax mines. Hike up Golden Canyon to marker #10, then follow trail over badlands to Zabriskie Point or down Gower Gulch (no trail).	5 miles half day	moderate 700 feet
LITTLE HEBE CRATER TRAIL			
<i>Ubehebe Crater parking area, 8 miles west of Scotty's Castle</i>	Volcanic craters and elaborate erosion. Hike along west rim of Ubehebe Crater to Little Hebe. Continue around Ubehebe's rim for 1.5-mile loop hike	1 mile 1-2 hours	moderate 300 feet
MESQUITE FLAT AND DUNES			
<i>2.2 miles east of Stovepipe Wells on Hwy 190</i>	Graceful desert dunes, numerous animal tracks. Walk cross-country to 100 ft. high dunes. Good for full moon hikes. No trail.	2 miles to highest dune 2.5 hours	easy to moderate varies
MOSAIC CANYON			
<i>Mosaic Canyon parking area, 2 miles from Stovepipe Wells Village</i>	Popular walk up a narrow, polished marble-walled canyon, requires scaling some dry falls at the upper end.	1 to 4 miles 1 hour-half day	moderate 750 feet
TELESCOPE PEAK TRAIL			
<i>Mahogany Flat Campground, 9 miles east of Wildrose Campground off Route 178, often impassable to passenger cars.</i>	Steep trail winds through pinyon and juniper to the highest point in the park, Telescope Peak, which offers breathtaking views of Death Valley to the east and Panamint Valley to the west.	14-mile all day	strenuous 3,000 feet
NATURAL BRIDGE CANYON			
<i>Natural Bridge parking area, 1.5 miles off Badwater Road</i>	Gradual uphill walk past unique geological features and a bridge.	½ mile 1 hour	moderate 185 feet
TITUS CANYON NARROWS			
<i>Titus Canyon Mouth parking area, 3 miles off Scotty's Castle Road</i>	Easy access to lower Titus Canyon. Follow gravel road up wash 1.5 miles through narrows or continue to Klare Springs petroglyphs at 6.5 miles.	2-11 miles 2 hours-all day	easy to difficult 750 feet
WILDROSE CHARCOAL KILNS			
<i>7 miles east of Wildrose Campground</i>	Features beehive-shaped kilns formerly used to produce charcoal for ore smelters in the Argus Range.	1/8 mile 15 mins	easy level
WILDROSE PEAK TRAIL			
<i>Charcoal Kilns, 7 miles east of Wildrose Campground</i>	Moderately steep trail winds through pinyon and juniper to sweeping views of Death Valley. Best in the afternoon.	8.2 miles 4-6 hours	moderate 2,200 feet



ADJUST YOUR ALTITUDE

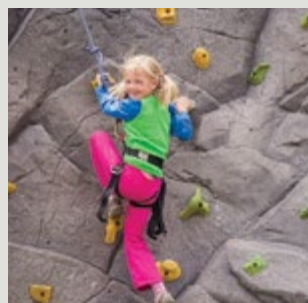
Your perfect basecamp lies at 8,000 ft in Mammoth Lakes. From here, Death Valley and tons of Eastern Sierra adventures are an easy daytrip away. Enjoy the 360° views from 11,053 ft. when you book the Stay & Gondola Package – available at all Mammoth Lodging Collection properties.

FREE GONDOLA TICKET WITH EVERY NIGHT YOU STAY

800.MAMMOTH

MAMMOTHMOUNTAIN.COM

FACILITIES OPERATED IN PARTNERSHIP WITH INYO NATIONAL FOREST



SELF-GUIDED WALKS AND HIKES

Trail Destination	Description	Round Trip Distance Time	Difficulty Elevation Gain
GOLDEN CANYON TRAIL			
Golden Canyon parking area, 2 miles south of Hwy 190 on Badwater Road	Easy trail through colorful canyon. Red Cathedral located quarter mile up canyon from last numbered marker.	2 miles 2 hours	easy 300 feet
HARMONY BORAX			
Highway 190, two miles north of the visitor center.	Hard-surfaced trail circles adobe dwellings, equipment and a 20-mule-team wagon from the 1880s.	¼ mile 20 mins	easy level
SALT CREEK INTERPRETIVE TRAIL			
1 mile off Hwy 190, 13.5 miles north of Furnace Creek	Boardwalk along small stream. Good for viewing rare pupfish and other wildlife. Best in late winter/early spring.	½ mile 1 hour	easy level
WINDY POINT TRAIL			
Scotty's Castle, 53 miles north of the visitor center on Scotty's Castle Road. Closed until 2019.	This trail climbs 160 feet to Scotty's grave overlooking his Death Valley ranch.	0.75 mile 30 mins	moderate 160 feet

education
programs
research
preservation

The hottest, driest and lowest non-profit in the U.S.

BOOKSTORE LOCATIONS:
Furnace Creek Visitors Center
Stovepipe Wells Ranger Station
Scotty's Castle Museum
Ash Meadows NWR
and Online at dvnha.org
All proceeds go to the Death Valley National Park region.

**DEATH VALLEY
NATURAL HISTORY
ASSOCIATION**
est. 1954

dvnha.org
(800)478-8564

CAMPING

Visitors can experience desert grandeur up close in one of Death Valley National Park's public campgrounds. The park has nine public campgrounds that vary in size, specific amenities and price. Only one campground takes reservations, but the rest operate on a first-come, first-served basis. For more adventurous visitors, Death Valley offers more than 3 million acres of pristine desert wilderness for backcountry camping. If you do stray from the public campgrounds, however, be sure to do so prudently. Plan ahead and consult with a ranger because desert conditions can be harsh.

BACKCOUNTRY CAMPING

At Death Valley National Park, there are more than **3 million acres** of wilderness and over 800 miles of backcountry dirt roads open to camping.

The park has implemented an optional permit system for all overnight camping. Permits for backcountry camping may be picked up at the visitor center or any ranger station. Backcountry camping is not permitted within one mile of any developed area, paved road or "day use only" area. Use preexisting campsites whenever possible to minimize impact. Due to rough dirt roads at Death Valley, backcountry roadside camping is generally only accessible to visitors with with four-wheel-drive vehicles or vehicles that have a high clearance.

BACKCOUNTRY CAMPING TIPS & REGULATIONS

- Backcountry campsites must be more than 200 yards from any water source to

- protect these fragile areas for wildlife.
- Campfires are prohibited, except in designated fire pits in developed campgrounds. Gathering wood is unlawful and the burning of wood is not allowed in the backcountry. The use of a low-impact backpacking stove is encouraged.
- Since many springs may be dry or contaminated, don't count on collecting water. Plan to carry water or stash it ahead of time. Those who visit during the hot spring, summer and fall months should carry at least one gallon of water per person, per day. Be advised that very low humidity creates extreme dehydration potential during the summer. Do not hike in the low elevations of Death Valley National Park between May and October.
- Camping is not allowed on the following "day use only" dirt roads: West Side Road, Wildrose Road, Skidoo Road, Aguerberry Point Road, Cottonwood Canyon Road (first eight miles only), Racetrack Road (from Teakettle Junction to Homestake Dry Camp) and Titus Canyon Road.
- Camping is not allowed at the following historic mining areas: Keane Wonder Mine, Lost Burro Mine and Ubehebe Lead Mine.
- Overnight group size is limited to 15 people and no more than six vehicles. Groups should plan to split into smaller units and camp at least one mile apart. For any groups larger than 15 people or for commercial groups, call the permit office for a special use permit at **(760) 786-3241**.

CAMPING CAMPGROUNDS

Campground	Months of Operation	Elevation (ft)	# of Sites	Water	Tables	Fireplaces	Flush Toilets	Pit Toilets	Dump Station	Fee Per Night
Emigrant	All Year	2,100	10	•	•		•			None
Furnace Creek*	All Year	-196	136	•	•	•	•		•	\$22
Mahogany Flat	Nov.-Mar.	8,200	10		•	•		•		None
Mesquite Spring	All Year	1,800	30	•	•	•	•		•	\$14
Stovepipe Wells	Oct.-May 10	Sea Level	190	•	•	•	•	•	•	\$14
Sunset	Oct.15-May 10	-196	270	•			•	•	•	\$14
Texas Spring	Oct.15-May 10	Sea Level	92	•	•	•	•	•	•	\$16
Thorndike	Nov.-Mar.	7,400	6		•	•		•		None
Wildrose	All Year	4,100	23	•	•	•		•		None

*To make reservations during the winter months, call (877) 444-6777. Is first-come, first-served and the fee changes to \$12 per night from April 16 to Oct. 14. RV hook-up sites are \$36 per night, but lifetime pass-holders get a \$10 discount.



Best Selection of Western Mountaineering

•Down Sleeping Bags •Jackets •Booties



For the warmest, lightest & best warmth-to-weight ratio, Western Mountaineering is the brand to choose.

A16 has the largest assortment of Western Mountaineering down sleeping bags and jackets in the known universe.

Visit one of our four mountain shops in Southern California!
 A16 San Diego A16 West L.A. A16 Solana Beach A16 Tarzana

New online store! www.adventure16.com



Serious Outdoor Gear for Fun Lovin' Humans!



MANZANAR NHS

Japan's attack on Pearl Harbor on December 7, 1941, led the United States into World War II and radically changed the lives of more than 110,000 men, women and children of Japanese ancestry living in the United States. The attack intensified racial prejudices and led to fear of potential sabotage and espionage by Japanese Americans among some in the government, military, news media and public.

On February 19, 1942, President Franklin D. Roosevelt signed Executive Order 9066 authorizing the secretary of war to establish military areas and to remove from those areas anyone who might threaten the war effort.

Without due process, the government gave everyone of Japanese ancestry living on the West Coast one week's notice to decide what to do with their houses, farms, businesses and other possessions. They did not know where they were going or for how long. Each family was assigned an identification number and loaded into cars, buses,

trucks and trains, taking only what they could carry with them. Located at the foot of the Sierra Nevada Mountains in eastern California's Owens Valley, Manzanar War Relocation Center was one of 10 camps that confined Japanese Americans from 1942 to 1945.

Congress established Manzanar National Historic Site in 1992 to preserve the site and its stories. Archeological surveys and oral history interviews are ongoing.

THINGS TO DO

The Manzanar Visitor Center offers 8,000 square feet of exhibits with stories, photographs, artifacts, audiovisual presentations and opportunities for reflection.

Visit the reconstructed barracks, with newly installed exhibits that feature personal voices, diaries, photos and video clips from former inmates.

Take the 3.2-mile self-guided auto tour around the site to see rock gardens, foundations, historic orchards and the camp cemetery.

Although cars and bicycles are restricted to the tour road, you are free to explore the entire square-mile site on foot. Walking is one of the best ways to see everything. Remember, be careful while walking and do not disturb or collect anything.



Naotake Murayama

A memorial for the fallen stands at Manzanar National Historic Site.

VISITOR INFORMATION

The 814-acre Manzanar National Historic Site is open every day from dawn to dusk. The Visitor Center is open daily, from 9 a.m.–4:30 p.m. (closed December 25). For more information, call (760) 878-2194 ext. 3310 or visit the park's website at nps.gov/manz.



JOSHUA TREE NATIONAL PARK

The twisted trees and intriguing rocky landscape give the impression that Joshua Tree National Park was ripped from the pages of a Dr. Seuss book. Though secluded, the park sits within a three-hour drive of more than 18 million people, including those living in Southern California.

HISTORY

Minerva Hamilton Hoyt, a Pasadena socialite who was extremely fond of cacti and desert plants, became concerned about the wanton removal and destruction of desert flora. Her tireless efforts to protect this area culminated in the preservation of 825,000 acres as Joshua Tree National Monument in 1936. The monument protected the unique assembly of natural resources convened by the junction of two of California's ecosystems: the Colorado Desert, a western extension of the vast Sonoran Desert, and the southern boundary of the Mojave Desert, which features critical habitat for the park's namesake, the Joshua tree, as well as the Little San Bernardino Mountains, which reach above 4,000 feet and provide habitat for California juniper and pinyon pine. The most extensive stands of Joshua trees—which may have been dubbed by pioneers who thought the tree's outstretched limbs resembled Joshua, the biblical figure, in supplication—are primarily found in the western half of the park.

The park's diverse flora is matched by its fauna, including herds of desert bighorn and seven species of rattlesnakes. Migratory birds fly along the Pacific flyway, which also transects the park. It was in

part for this unusual diversity of plants and animals that Joshua Tree National Monument was created.

In 1976, Congress designated 420,000 acres within the monument as wilderness. Today, of the park's current 794,000 acres, 595,000 has this designation, allowing visitors to explore areas in relative solitude. Joshua Tree received national park status as part of the Desert Protection Bill on October 31, 1994.

The park encompasses some of the most interesting geologic features found in California's desert areas. Exposed granite monoliths attract rock climbers of all skill levels. Monzogranite, a molten liquid that was heated by the continuous movement of the Earth's crust, oozed upward and cooled while still below the surface. These plutonic intrusions then developed rectangular joints that went through a series of erosion forces that created the impressive rock formations present today.

The presence of water, that rarest of desert commodities, allows life to flourish. Five of North America's 158 desert fan palm oases are located in Joshua Tree National Park. The **Oasis of Mara**, a good example of the human history of the park, is a cornerstone of the Joshua Tree National Park story. The oasis was first settled by the Serrano Indians who called it Mara, "the place of little springs and much grass." Legend says they planted the palms to provide food, clothing, cooking implements and housing for themselves and as habitat for a variety of desert creatures. In 1850 the Chemehuevi tribe settled peacefully at the oasis with the Serrano. In the mid-1800s, prospectors

Bryan Pocius



The rock formations and unique fauna of Joshua Tree attract climbers, photographers and explorers.

brought by the gold rush started to siphon water and cut down trees. In 1880, cattleman moved into the area to take advantage of the high desert grasslands of the Pinto and Little San Bernardino Mountains. By 1913, the Serrano and Chemehuevi were gone. Their spirits are still with us in the archaeological sites they left behind. The Oasis Visitor Center and nature trail at the Oasis of Mara give visitors a peek of history.

THINGS TO DO

Joshua Tree offers endless hours of exploration for all skill and interest levels; rock climbing, biking, self-guided nature trails, birding, horseback riding and wildflower viewing (Rock-climbers must have a professional guide. Contact Mojave Guides at mojaveguides.com). Visitors can camp at one of nine developed backcountry campgrounds—you must register at a backcountry registration

board. If planning to camp from October–April, arrive Sunday–Wednesday to assure you get a camping spot. The park's 10 mountains greater than 5,000 feet (1,524 m) in elevation will challenge "peak baggers" of all skill levels. Or make it your goal to hike to all five of the park's fan palm oases. Other trails lead you to remnants of the gold mining era, a part of the park's history.

For more park information, call (760) 367-5522, or stop by one of the visitor centers. For information online, visit nps.gov/jotr.

Oasis Visitor Center is located at park headquarters in Twentynine Palms; Joshua Tree Visitor Center, in the Village of Joshua Tree; Cottonwood Visitor Center is located eight miles north of Interstate 10 at Cottonwood Spring. All visitor centers are open year-round. The Black Rock Nature Center, located in Black Rock Campground, is open October through May.



MOJAVE NATIONAL PRESERVE

At 1.6 million acres, Mojave National Preserve is not only the third-largest National Park Service area outside of Alaska, but it also holds portions of three of the four major North American deserts: the Mojave and transitional elements of the Great Basin and Sonoran.

Established in 1994 by the **California Desert Protection Act**, the preserve is located between Los Angeles and Las Vegas, providing serenity and solitude from the crowds of these major metropolitan areas. Though many areas of Mojave appear barren, signs of life abound. There are hundreds of seeps and springs, cactus gardens, isolated communities of white fir and chaparral and the densest, largest Joshua tree forest in the world. Sand dunes, canyons, mountains, volcanic cinder cones, great mesas, domes and lava flows define the preserve. Rocks 2.5 billion years old have been discovered in the Clark Mountains, which rise to 7,929 feet, reinforcing Mojave's reputation as a land of extremes.

HISTORY

The Mojave American Indian tribe, namesake of the preserve, called this desert home. By the time the Spanish arrived in the territory in the 16th century, the Mojaves were the largest concentration of people per square mile in the Southwest. Additionally, the Chemehuevi lived on the land that is now the preserve. Before contact with new settlers, the Chemehuevi lived on prickly pear, mesquite and roasted agave blooms and hunted deer and bighorn sheep. Living near the Colorado River, these people were able to thrive in the Mojave Desert.

The Mojave were a fierce people willing to protect their land, and willing to venture far from it. They traveled to the Pacific Coast, becoming proficient traders and exchanged crops with coastal tribes for goods such as shells, and made pots, bowls, ladles and dishes decorated with geometric designs from sedimentary clay and crushed sandstone. The material was coiled, dried, painted and fired in either open pits or rudimentary kilns. The women took the crafts further by making unique pottery dolls for the children, dressing and decorating them complete with human hair.

The search for fortune brought the first white man, Fray Francisco Garces, to the land of the Mojave in 1775. His writings portrayed the Mojave as friendly and industrious. Trappers soon followed, but their interactions with the Mojaves were less peaceful and resulted in years of fighting, distrust and death. In 1865, almost a hundred years and a docket full of Indian wars later, the federal government created the Colorado Indian Reservation near Parker, the southern range of the Mojave.

Ranching has played a vital role in the region over the past 150 years. A hearty group raised cattle and lived throughout the land that is the current preserve. Today, few ranchers are left and the area and the places in the preserve are only meant to serve as a vivid reminder of the activities that used to take place. Mojave National Preserve is in the process of creating the largest historical ranching district recorded in the National Register of Historic Places.

In 1872, the General Mining Act permitted individuals to stake a claim on a plot of land where a mineral deposit was

discovered. This resulted in a gold rush in the area, while in later years others tried to profit off of silver (1883) and iron ore (1940s). As western expansion marched forward, so did the railroads. In 1902, the Union Pacific made its presence known on the West Coast with the construction of the Salt Lake Route between Salt Lake and Los Angeles. Construction began at the two endpoints and met in the Mojave Desert. The preserve's visitor center, **Kelso Depot**, was once an essential stop on the line. Kelso Depot received its name when three warehousemen put their names into a hat, and the winner was John Kelso.

ACTIVITIES AT MOJAVE NATIONAL PRESERVE

Up to 650 feet in height, Kelso Dunes in Mojave National Preserve are the third tallest in North America. When conditions are right, as sand grains move over one another, they sometimes create a booming sound. Try running down the slopes to make the dunes boom. The preserve is great for backpacking, horseback riding, hiking, four-wheeling (on designated roads; All vehicles must be street-legal) and wildflower viewing.

- Backpacking is allowed. Since there is no registration system and few established trails, make sure you have a map and **let someone know your itinerary**. Remember to camp at least a quarter mile from any paved road and half a mile from developed areas. Your campsite must also be 200 yards from any water sources.
- Three national park campgrounds are available inside the preserve: Hole-in-the Wall and Mid Hills Campgrounds are first-come, first-served. Black Canyon Equestrian & Group Campground is

NPS



The morning sun makes shadows across the Mojave National Preserve.

reservation only. Call (760) 252-6104 or (760) 928-2572.

- Four-wheel drive routes are popular in the preserve. One of the most recommended is the Mojave Road, which runs across the entire park from east to west. Driving off established roads is prohibited.
- Horseback riding is welcome, but there are no horses for rent.
- Although there are few established hiking trails, abandoned dirt roads, washes and ridgelines offer an abundance of cross-country hiking opportunities. A map can be found at nps.gov/moja/planyourvisit/hiking.htm.

For more information, contact Mojave National Preserve Headquarters at (760) 252-6100, Kelso Depot Visitor Center at (760) 252-6108, or visit nps.gov/moja.



PHOTOGRAPHY

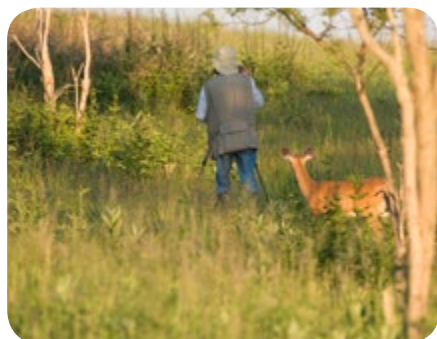
The ecosystems of America's national and state parks and public lands are among the most diverse on the planet—from the wetlands of the Everglades to the temperate rain forests of Olympic National Park and the deserts of Death Valley to the mountains of Yellowstone and Grand Teton. For both aspiring and experienced photographers, the goal of any trip to a national park is to capture its endemic wildlife.

Taking photographs of animals presents a unique set of challenges. Landscapes cooperate; wildlife does not. Not only are animals likely to react to a photographer's presence, but they are also driven by their own instincts and behavior, which can make capturing them difficult. The tips below will help you compose better wildlife images of all creatures great and small—from the bison to the tiniest hummingbird and everything in between.

- **Use a tripod.** If you are using a large telephoto lens, consider investing in a gimbal head, which will make it easier to track your subject.
- **Know your subject.** Before you take out your camera, understand your subject's

behavior so that you can be prepared for what it will do next.

- **The eyes have it.** Capturing your subject's eyes will lead the viewer into the picture and make your image more impactful. Always keep the eyes in focus and try to place them in the power points (the intersection of rule of third guidelines).
 - **Keep a safe distance.** You'll want to keep a minimum of 25 yards between you and your subject and more than 75 yards for larger predators. That means that you'll need a big telephoto lens if you want to get up close and personal.
 - **Shoot in burst mode.** Instead of taking a single frame, increase the probability that you'll capture the behavior, head position or angle by capturing multiple frames.
 - **Be prepared.** Wildlife, and particularly birds, move quickly and without provocation. Practice your panning skills to better catch birds when they alight.
 - **Timing is everything.** The best time to photograph wildlife is during the golden hours—at dusk and dawn—when the light is soft and less likely to cast harsh shadows across your subject's face.
 - **Keep it simple.** The easiest way to draw attention to your subject is to use a simple background. Use a shallow depth of field to blur any distracting backgrounds.
 - **Aim for the action.** Make your image more compelling by capturing your subject exhibiting its natural behavior—flying, hunting, eating or caring for young.
- The best way to take better photographs is to practice, and you don't need to go far. Buy a bird feeder and build a studio in your backyard, where you'll be able to create your own version of *A Star(ling) is Born*.



JPecha/iStock

Don't miss your shot! Be aware of your surroundings.



Arches National Park

Two National Parks... ...One Extraordinary Destination!

Visit the only Utah destination where you can experience two of **The Mighty 5®** National Parks from one convenient location. Visitors from around the world come to the town of Moab to experience sunrise over the towering depths of Canyonlands National Park and then follow it up with sunset in the otherworldly red rock landscape of Arches National Park. Moab's year-round access to thousands of square miles of amazing red rock landscapes, along with the cool waters of the Colorado River, has made it one of the most sought-after outdoor recreation destinations in the American Southwest.



Put yourself in the picture and start planning your visit today!

For a FREE travel planner call 435-259-8825 or visit discovermoab.com

Canyonlands National Park




MOAB
Where Adventure Begins

LIFE
UTAH
ELEVATED



Death Valley National Park has a host of activities to entice visitors of all ages—including programs just for kids. Visiting the park presents a great opportunity to have fun and learn something about the biology, geology and history that’s all around you. If you want to learn all you can about Death Valley National Park, you can...

BECOME A JUNIOR RANGER

Young people are eligible to become junior rangers. You can pick up the junior ranger packet at the front desk of the visitor center, complete the fun activities inside and receive a free Death Valley junior ranger badge. The badge is a replica of the National Park Service badge with features specific to Death Valley. Junior ranger patches are also available upon completion of the junior ranger activities at park bookstores for a small fee.

EXPLORE DEATH VALLEY

Death Valley National Park is full of vast and incredible geology. Convince mom and dad to take you on an extraordinary tour that you’ll never forget. You’ll find colorful cliffs, sliding stones and eerie salt flats. See the “Sights to See” chapter for ideas and directions. Remember to take only pictures and leave only footprints.

SLIDE DOWN A SAND DUNE

Although sand dunes make up only a small percentage of this desert, the ones you find at Death Valley will put any sandbox you’ve played in to shame! Don’t leave the park until you have tromped and tumbled down the 100-foot dunes at Mesquite Flat. Tell your parents the sand dunes are

about two miles east of Stovepipe Wells Village—23 miles northwest of the Furnace Creek Visitor Center—on Highway 190.

BECOME A WEB RANGER

Bring national park fun to your computer! Learn more about national parks and get help to plan your trip by visiting nps.gov/webrangers. Explore the parks in a whole new way as you play interactive and educational games online.

PEER INTO OUTER SPACE

Explore the desert at night when the moon is full and all the nocturnal creatures venture out to hunt! Look for kangaroo rats and kit foxes with your family, or go on a guided hike with a ranger and stargaze. Look at the night sky through a telescope and see the heavens like you never have before!

David O



Kids will get a kick out of Death Valley’s landscape; it’s like a huge, beautiful sandbox.

Mountain Gear
has the clothing,
gear and expertise
you need for
your outdoor
adventures!

HIKING • CAMPING • CLIMBING
BACKPACKING • MOUNTAINEERING

Your Adventure Starts Here
MOUNTAIN GEAR
mountaingear.com
800.829.2009

White Clouds Wilderness, ID Jim Rueckel



Join SCA as we celebrate **60 YEARS OF SERVICE** to national parks and empower young conservation leaders across America.

Serve, give or learn more at THESCA.ORG





IF YOU ONLY HAVE A DAY

Since Death Valley is so large, packing all your sightseeing into a single day can be a challenge. Plan carefully and **start early** to get a true flavor of what the park has to offer in a short period.

Ultimately, what you see depends on where you enter the park. If you begin the day in Furnace Creek, many of the most impressive sights are nearby. Get up early and drive 17 miles south to **Badwater**, the lowest point in North America and a great place to watch the sunrise over the mountains.

Returning north, stop at **Natural Bridge**, a medium-sized conglomerate rock formation that has been hollowed at its base to form a span across the canyon walls. Then proceed to **Devil's Golf Course**. From Devil's Golf Course, take a short detour to the right onto **Artist's Drive**, a nine-mile route that passes **Artist's Palette**. The striking array of colors here are brilliant reminders of the minerals

in the rocks and the earth. Four miles north, you'll come to the Golden Canyon Trail, a two-mile trip that winds through a canyon of colorful rock walls.

Just before **Furnace Creek**, take a short side-trip on Highway 190 east three miles to **Zabriskie Point** and see the 20-Mule Team Canyon. Return to Furnace Creek for lunch and visit the Furnace Creek Visitor Center. Heading north from Furnace Creek, stop off and see the **Harmony Borax Works**.

Twenty miles up the road is Stovepipe Wells where **Mosaic Canyon** and the sand dunes are located, a great place to watch the sunset. **Scotty's Castle** (which is closed for restoration) will be beyond striking distance if you spend the morning at the sites surrounding Furnace Creek. After your first day of fun, there's a good chance you'll want to stay longer.



Artist's Palette is made from multicolored volcanic hues, best viewed in afternoon light.

NPS

CASIO

Smart Outdoor Watch

PRO TREK Smart androidwear

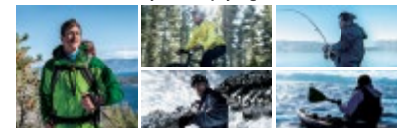


GPS + FULL-COLOR MAP



Supports positioning data from three satellites | Full-color map display for offline use

Discover new ways of enjoying the outdoors



| Built-in low-power GPS | Full-color map display for offline use | Dual-layer LCD | Bluetooth® connection | 50-meter water-resistant structure* | Military Standard compliance* | Android Wear™ APP |

*1 Original Casio criteria: *2 *Drop: Tested in conformance with MIL-STD-810G Method 516.7 Procedure IV. *Random Vibration: Tested in conformance with MIL-STD-810G Method 514.7 Procedure I. *Humidity: Tested in conformance with MIL-STD-810G Method 507.6 Procedure II. *Solar Radiation: Tested in conformance with MIL-STD-810G Method 525.6 Procedure II. *Non-Operating Altitude: Tested in conformance with MIL-STD-810G Method 500.6 Procedure I. *Operating Altitude: Tested in conformance with MIL-STD-810G Method 500.6 Procedure I. *Non-Operating High Temperature: Tested in conformance with MIL-STD-810G Method 501.6 Procedure I. *Non-Operating Low Temperature: Tested in conformance with MIL-STD-810G Method 502.6 Procedure I. *Temperature Shock: Tested in conformance with MIL-STD-810G Method 503.6 Procedure I-C. *Icing Freezing Rain: Tested in conformance with MIL-STD-810G Method 521.4 Procedure I. (The performance of this instrument has been confirmed under various test environments, but its operation in actual use is not guaranteed for every environment. Freedom from breakage or failure can also not be guaranteed.) *This product conforms to the JIS C 61000-3-2 harmonic electrical current standard. *This product is in conformity with or certified to the Radio Law, Telecommunications Business Law and VCCI. *The screen design shown is correct at the time of development. Actual design may vary. *The final specifications may differ from those shown. *Bluetooth® and Bluetooth SIG are registered trademarks. *Wi-Fi are Wi-Fi Alliance registered trademarks. *Android, Android Wear and other terms are trademarks of Google Inc. *Other service and product names are, in general, trademarks or registered trademarks of the companies concerned.



protrek.casio.com

CASIO ©2017 CASIO AMERICA, INC.

Jeep®

FREEDOM

IN EVERY DIRECTION

THE ALL NEW 2017 COMPASS



© 2017 FCA US LLC. All Rights Reserved.
Jeep is a registered trademark of FCA US LLC.

*The All-New 2017 Jeep Compass Limited.
With a highway fuel economy that's best in its class,
the freedom to explore all of America's best parks is yours.*

Jeep is proud to be a founding member of Tread Lightly!

tread lightly!®

ON LAND AND WATER



00